

2013 IEEE INTERNATIONAL CONFERENCE ON
INDUSTRIAL ENGINEERING AND ENGINEERING MANAGEMENT



IEEM 2013

10 - 13 DECEMBER 2013 | BANGKOK, THAILAND

www.IEEM.org



Organized by : IEEE TMC Thailand Chapter IEEE TMC Hong Kong Chapter
IEEE TMC Singapore Chapter IEEE SMC Hong Kong Chapter

Organizers & Committees

General Chair

Pakorn Adulbhan

*The Royal Institute of Thailand,
Thailand*

Organizing Chairs

Tritos Laosirihongthong

*Thammasat University,
Thailand*

Roger Jiao

*Georgia Institute of Technology,
USA*

Program Chairs

Min Xie

*City University of Hong Kong,
Hong Kong*

Ronnachai Sirovetnukul

*Mahidol University,
Thailand*

International Advisors

Daniel Berg

*Rensselaer Polytechnic Institute,
United States*

Boaz Golany

Technion, Israel

Thong Ngee Goh

*National University of Singapore,
Singapore*

Way Kuo

*City University of Hong Kong,
Hong Kong*

Mike Gregory

Cambridge University, United Kingdom

Robert W. Grubbström

*Linköping Institute of Technology,
Sweden*

Martin Helander

*Nanyang Technological University,
Singapore*

Larry Y.C. Ho

*Harvard University, United States and
Tsinghua University, China*

Tinus Pretorius

University of Pretoria, South Africa

Ralf Reichwald

Technical University of Munich, Germany

Gavriel Salvendy

*Purdue University, USA and Tsinghua
University, China*

Mitchell M. Tseng

*Hong Kong University of Science and
Technology, Hong Kong*

Ue-Pyng Wen

National Tsing Hua University, Taiwan

Advisory Committee

Arthorn Sinsawad

Chair, IEEE Thailand Section

Somkit Lertpaithoon

Rector, Thammasat University, Thailand

Prapat Wangskarn

*Dean, Faculty of Engineering,
Thammasat University, Thailand*

Jirarat Teeravaraprug

*Department Head, Department of
Industrial Engineering, Thammasat
University, Thailand*

Dumrong Taweewangsakulthai

*Chair, Industrial Engineering
Committee, The Engineering Institute of
Thailand Under H.M. The King's
Patronage, Thailand*

Ampika Krairit

*Advisor, Industrial Engineering
Committee, The Engineering Institute of
Thailand Under H.M. The King's
Patronage, Thailand*

Voratas Kachitvichyanukul

Asian Institute of Technology, Thailand

Songlin Chen

IEEE TMC Singapore Chapter Chair

Edwin Cheung,

IEEE TMC Hong Kong Chapter Chair

James Liu,

IEEE SMC Hong Kong Chapter Chair

Tritos Laosirihongthong,

IEEE TMC Thailand Chapter Chair

Technical Program Committee

Michel Aldanondo

Univ Toulouse Mines Albi, France

Luciana Alencar

Federal University of Pernambuco, Brazil

Imad Alsayouf

University of Sharjah, UAE

Teresa Alvarez

University of Valladolid, Spain

Mehdi Amiri-Aref

*Mazandaran University of Science and
Technology, Iran*

Tarik Aouam

American University of Sharjah, UAE

Pedro Arezes

University of Minho, Portugal

Ana Paula Barroso

UNIDEMI, FCT-UNL, Portugal

Samuel Bassetto

Ecole Polytechnique de Montreal, Canada

Nadjib Brahimi

University of Sharjah, UAE

Paul Chang

*National Changhua University of
Education, Taiwan*

Shin-Guang Chen

Tungnan University, Taiwan

Cheng-Wu Chen

*National Kaohsiung Marine University,
Taiwan*

Bing Chen

*Northwestern Polytechnical University,
China*

Jui-Sheng Chou

*National Taiwan University of Science
and Technology, Taiwan*

Thierry Coudert

Univ Toulouse ENIT-LGP, France

Stefan Creemers

IESEG Management School, France

Yves De Smet

Université Libre de Bruxelles, Belgium

Fikri Dweiri

University of Sharjah, UAE

Chao Fang

Wuhan University, China

Laurent Geneste

Univ Toulouse ENIT-LGP, France

Antonio Grilo

*Faculdade de Ciências e Tecnologia da
Universidade Nova de Lisboa, Portugal*

Guillermo Gutierrez

Instituto Tecnológico de Morelia, Mexico

Md. Mamun Habib

*American International University
Bangladesh, Bangladesh*

Rika Ampuh Hadiguna

Andalas University, Indonesia

Siana Halim

Petra Christian University, Indonesia

Takashi Hasuikite

Osaka University, Japan

Jishnu Hazra

*Indian Institute of Management
Bangalore, India*

Chin-Yu Huang

National Tsing Hua University, Taiwan

Supachart Iamratanakul

Kasetsart University, Thailand

Shinji Inoue

Tottori University, Japan

Raja Jayaraman

*Khalifa University of Science,
Technology & Research, UAE*

Minghai Jiao

Northeastern University, China

Mingzhou Jin

University of Tennessee, USA

Yuya Kajikawa

Tokyo Institute of Technology, Japan

Matti Karvonen

*Lappeenranta University of Technology,
Finland*

Chompoonoot Kasemset

Chiang Mai University, Thailand

Organizers & Committees

Soo Beng Khoh
Motorola Solutions, Malaysia

Chil-Chyuan Kuo
*Ming Chi University of Technology,
Taiwan*

Chien-Liang Kuo
Chinese Culture University, Taiwan

C.K. Kwong
*The Hong Kong Polytechnic University,
China*

Tyrone T. Lin
National Dong Hwa University, Taiwan

Weidong Lin
Temasek Polytechnic, Singapore

Chu-Ti Lin
National Chiayi University, Taiwan

Chen-ju Lin
Yuan Ze University, Taiwan

Chun-Cheng Lin
National Chiao Tung University, Taiwan

Jun Lin
Xian Jiaotong University, China

Bor-Shong Liu
St. John's University, Taiwan

Yiliu Liu
*Norwegian University of Science and
Technology, Norway*

Jian Liu
University of Arizona, USA

Mei-Chen Lo
National United University, Taiwan

Huitian Lu
South Dakota State University, USA

Virginia Machado
UNIDEMI, FCT-UNL, Portugal

Jose Machado
University of Minho, Portugal

Harekrishna Misra
*Institute of Rural Management Anand,
India*

Lars Moench
University of Hagen, Germany

Wasawat Nakkiew
Chiang Mai University, Thailand

Tatsushi Nishi
Osaka University, Japan

Ville Ojanen
*Lappeenranta University of Technology,
Finland*

Selma Oliveria
University Sao Paulo, Brazil

Mohamed K. Omar
*Nottingham University Business School,
Malaysia*

Taezoon Park
Soongsil University, South Korea

Syafie Syafie
University Putra Malaysia, Malaysia

Jennifer Percival
*University of Ontario Institute of
Technology, Canada*

Leon Pretorius
University of Pretoria, South Africa

Suksan Prombanpong
*King Mongkut's University of
Technology Thonburi, Thailand*

Kit Fai Pun
*University of the West Indies,
Trinidad and Tobago*

Hendry Raharjo
*Chalmers University of Technology,
Sweden*

Kem Ramdass
*University of Johannesburg,
South Africa*

R.M. Chandima Ratnayake
University of Stavanger, Norway

Ralph Riedel
*Chemnitz University of Technology,
Germany*

Fernando Romero
University of Minho, Portugal

Mojahid Saeed Osman
*King Fahd University of Petroleum and
Minerals, Saudi Arabia*

Tomoko Saiki
Tokyo Institute of Technology, Japan

Ichiro Sakata
The University of Tokyo, Japan

Ilias Santouridis
TEI of Larissa, Greece

Kiyoshi Sawada
*University of Marketing and
Distribution Sciences, Japan*

Mahmood Shafiee
Cranfield University, UK

Ahm Shamsuzzoha
University of Vaasa, Finland

Sung Shim
Seton Hall University, USA

Ali Siadat
Arts et Metiers ParisTech, France

Ronnachai Sirovetnukul
Mahidol University, Thailand

Stuart So
*The University of Queensland,
Australia*

Harm-Jan Steenhuis
Eastern Washington University, USA

Nachiappan Subramanian
*The University of Nottingham Ningbo,
China*

Fabrice Talla Nobibon
KU Leuven, Belgium

Yoshinobu Tamura
Yamaguchi University, Japan

Hisato Tashiro
The University of Tokyo, Japan

Pei-Lee Teh
Monash University, Malaysia

Purit Thanakijkasem
*King Mongkut's University of Technology
Thonburi, Thailand*

Ramayah Thurasamy
Universiti Sains Malaysia, Malaysia

Norbert Trautmann
University of Bern, Switzerland

Ming-Lang Tseng
*Lung Hwa University of Science and
Technology, Taiwan*

Yuan-Jye Tseng
Yuan Ze University, Taiwan

Leonilde Varela
University of Minho, Portugal

Enrico Vezzetti
Politecnico di Torino, Italy

Shengyong Wang
The University of Akron, USA

Yonggui Wang
*University of International Business and
Economics, China*

Chirag Warty
Ahilya Technologies, USA

Seng Fat Wong
University of Macau, Macau

Zheng Guo Xu
Zhejiang University, China

Bingwen Yan
*Cape Peninsula University of
Technology, South Africa*

QZ Yang
Circular Economy Research Centre, China

Jaekyung Yang
*Chonbuk National University, South
Korea*

Min Yao
Zhejiang University, China

Norio Yoshida
University of Toyama, Japan

Suhaiza Zailani
Universiti Sains Malaysia, Malaysia

Cai Wen Zhang
Sun Yat-sen University, China

Linda Zhang
IESEG School of Management, France

Allan Nengsheng Zhang
*Singapore Institute of Manufacturing
Technology, Singapore*



Table of Contents

TK 1 Technology & Knowledge Management (1)

Business Management and Mobile Experience <i>Riccardo COGNINI, Roberto GAGLIARDI, Alberto POLZONETTI</i>	1
Organizational Innovation through Knowledge Taxonomy Model <i>Iwan Inrawan WIRATMADJA, Augustina Asih RUMANTI, Trifenaus Prabu HIDAYAT</i>	8
Research on the Strategy of Patents Layout Basing on TRIZ <i>Hui LI, Runhua TAN, P. JIANG, H.G. ZHANG</i>	13
Individual Tacit Knowledge for Organization's Competitive Advantage <i>Augustina Asih RUMANTI, Iwan Inrawan WIRATMADJA</i>	18
Fostering Interdisciplinary Integration in Engineering Management <i>Tobias VAEGS, Inna ZIMMER, Stefan SCHRÖDER, Ingo LEISTEN, R. VOSSSEN, Sabina JESCHKE</i>	23
Organizational Culture, Inter-organizational Learning Ability and Innovation Performance of the Technology Alliance of Small and Medium Enterprises <i>Xiaodi ZHANG, Zhanxing ZHENG, Kexin HUANG, Ping WANG</i>	29

TK 2 Technology & Knowledge Management (2)

The Impact of Shukko (Employee Transfers) within Group Companies on the Capability and Speed of Promotion of Engineers <i>Hideki SHIMIZU-TANAKA, Yoshifumi NAKATA</i>	34
Intrinsic Motivation and Creative Behavior: Moderating Role of Active Efforts <i>Sayaka SHINOHARA, Tetsushi FUJIMOTO, Hideki SHIMIZU-TANAKA, Yoshifumi NAKATA</i>	39
Technology Transfer Portals: A Design Model for Supporting Technology Transfer via Social Software Solutions <i>Günther SCHUH, Susanne AGHASSI</i>	43
Comparison of Indicators to Detect Emerging Researches using Time Transition in Quasicrystals <i>Shino IWAMI, Junichiro MORI, Yuya KAJIKAWA, Ichiro SAKATA</i>	48
Identity Management for the Requirements of the Information Security <i>Mirley FERREIRA, Kelly ALONSO</i>	53
Knowledge Management in the Chinese Local Beer Market: A Case Study <i>Jiageng DUAN, Nachiappan SUBRAMANIAN, Muhammad ABDULRAHMAN</i>	58

OR 1 Operations Research (1)

Mathematical Modeling of Co2e Emissions in One-to-one Pickup and Delivery Problems <i>Emrah DEMIR, Tom VAN WOENSEL</i>	63
G/G/1 Models for a Single Machine under Different Types of Interruptions <i>Kan WU, Ning ZHAO</i>	68
Improving Productivity of the SMEs in Singapore – Case Studies <i>Aloysious LEE, Roland LIM, Bin MA, Laura Xiao Xia XU</i>	73

A Note on Computing the Exact Probability Distribution of the Project Completion Time in a Stochastic PERT Network <i>Zdzisław MILLAN</i>	78
A Bi-level Model for Resource-Constrained Multiple Project Scheduling Problems <i>Zhe ZHANG, Yang WANG</i>	83
A Novel Multi-Objective Fuzzy Mathematical Model for Designing a Sustainable Supply Chain Network Considering Outsourcing Risk under Uncertainty <i>Firoozi MEHDI, Ali SIADAT, Nima SALEHI, S. M. MOUSAVI</i>	88
 OR 2 Operations Research (2)	
An Improved Heuristic Algorithm for the Special Case of the Set Covering Problem <i>Amnon GONEN, Tzhi AVRAHAMI, Uriel ISRAELI</i>	93
Efficiency Improvement in Explicit Enumeration for Integer Programming Problems <i>Shin-Guang CHEN</i>	98
A New Methodology for Solving Multi-Objective Stochastic Optimization Problems with Independent Objective Functions <i>Saltuk SELCUKLU, David COIT, Frank FELDER, Mark RODGERS, Naruemon WATTANAPONGSAKORN</i>	101
Optimal Pricing and Inventory Policy with Delayed Payments and Order Cancelations <i>Jie ZHANG, Baozhuang NIU</i>	106
Optimal Scheduling Problem for Taiwan Post Office Counters and Manpower <i>Gwo-Liang LIAO, Wen-Hsin CHIANG</i>	111
Modeling and Solution of Practical Airline Crew Scheduling Problems <i>Yu IJIMA, Tatsushi NISHI, Masahiro INUIGUCHI, Satoru TAKAHASHI, Kenji UEDA, Keiji OJIMA</i>	116
 HF 1 Human Factors (1)	
Knowing What a User Likes: Mobiquitous Home with NFC Smartphone <i>Teh PEI-LEE, Ahmed PERVAIZ KHALID, Soon-Nyeon CHEONG, Alan H.S. CHAN, Wen-Jiun YAP</i>	121
Anthropometric Measures and Static Muscular Strengths for Youths Males and Females <i>Kai-Way LI, Chao-Cheng SU, Szu-Yin HUANG</i>	126
Relationship between Floor-type Gait Adaptations and Required Coefficient of Friction <i>Kai-Way LI, Szu Yin HUANG, Chien Wen WANG</i>	131
Subjective Rating of Floor Slipperiness & Slip/Fall Outcomes in a Gait Experiment <i>Kai-Way LI, Chien Wen WANG, Szu-Yin HUANG</i>	136
Quantification of Human Error Rate in Underground Coal Mines - A Fuzzy Mapping and Rough Set Based Approach <i>Suprakash GUPTA, Pramod KUMAR, Netai Chandra KARMAKAR, Sanjay Kumar PALEI</i>	140
A Case Study Evaluating the Impact of Human Behavior on a Manufacturing Process In-line with Automatic Processes by Means of a Simulation Model <i>Ana Eduarda SA SILVA, Michael DONAUER, Americo AZEVEDO, Paulo PEÇAS, Elsa HENRIQUES</i>	145

DM 1 Decision Analysis & Methods (1)

Leadership Selection, Punishment Salience and Cooperation <i>Yanmei LI, Miao CHAO</i>	150
Efficiency and Productivity Growth of Technology-Based Firms in Business Incubators: A DEA and Malmquist Index Approach <i>José SANTOS, Antonio GRILO</i>	154
A Decision Analysis for the Dynamic Crop Rotation Model with Markov Process's Concept <i>Tyrone T. LIN, Chung-Hsiao HSIEH</i>	159
A New Version of 2-Tuple Fuzzy Linguistic Screening Evaluation Model in New Product Development <i>Wen-tao GUO, Van-Nam HUYNH</i>	164
The Position of Sustainable Corporate Social Responsibility in the Process of Creating Sustainable Prosperity in the European Union <i>Oliver MORAVCIK, Lubomir SMIDA, Peter SAKAL</i>	170
Evaluating and Benchmarking Operational Performance of Manufacturing Facilities in Networks of Multinational Corporations <i>Alireza TAVAKOLI, Marco BIESEN</i>	175

SC 1 Supply Chain Management (1)

Optimization of Forest Vehicle Routing Using Reactive Tabu Search Metaheuristic <i>Moussa BAGAYOKO, Thien-My DAO, Bathelemy-Hugues ATEME-NGUEMA</i>	181
An Inoperability Input-output Model (IIM) for Disruption Propagation Analysis <i>Chin Sheng TAN, Puay Siew TAN, Siang Guan LEE, Manh Tung PHAM</i>	186
Improvement to the Freight Management of ITAR Controlled Items using Lean Six Sigma <i>Kin Meng WONG, Tony HALIM, Yan Weng TAN</i>	191
Performance Measurement of a Dairy Supply Chain: A Balance Scorecard Perspective <i>Gyan PRAKASH, Rakesh PANT</i>	196
Modeling Supply Risk using Belief Networks: A Process with Application to the Distribution of Medicine <i>Kanogkan LEEROJANAPRAPA, Robert VAN DER MEER, Lesley WALLS</i>	201
Social Media for Supply Chain Risk Management <i>Xiuju FU, Rick Siow Mong GOH, Joo Chuan TONG, Loganathan PONNAMBALAM, Xiao Feng YIN, Zhaoxia WANG, Haiyan XU, Sifei LU</i>	206

SC 2 Supply Chain Management (2)

Time-phasing and Decoupling Points as Analytical Tools for Purchasing <i>Jenny BACKSTRAND, Joakim WIKNER</i>	211
An Integration of AHP Approach and Bayes Classification Algorithm in Supplier Selection <i>Felix CHAN, Nick CHUNG, Jenny CHOW, Ben NIU</i>	216
Optimal Pricing and Returns Policies for Innovative Products with the One-Shot Decision Theory <i>X. MA, Peijun GUO</i>	221

Barriers to Green Supply Chain Implementation in the Electronics Industry <i>Sorraya KHIEWNAVAVONGSA, Edie SCHMIDT</i>	226
An EOQ Model with Consideration of Second-Trip In-Store Replenishment <i>Vatcharapol SUKHOTU, Supachart IAMRATANAKUL</i>	231
Prioritizing Lean Supply Chain Management Initiatives in Healthcare Service Operations: A Fuzzy-AHP Approach <i>Tritos LAOSIRIHONGTHONG, Premaratne SAMARANAYAKE, Dotun ADEBANJO</i>	236
 SI 1 Service Innovation & Management (1)	
Service Performance Evaluation using Fuzzy Semantic Extraction of On-line Reviews <i>A. MEDINA-BORJA, M. CARRASCO</i>	243
Investigation of Team Composition and Task-related Conflict as Determinants of Engineering Service Productivity <i>Philipp M. PRZYBYSZ, Soenke DUCKWITZ, Susanne MÜTZE-NIEWÖHNER, Christopher M. SCHLICK</i>	250
The Service Science Practical Research of the BEST Model: The C telco's IPTV Service in Taiwan as the Example <i>Hung Chih LAI, Yao Cheng YU, Kae Kuen HU, Chien-Ming TUNG</i>	255
Influencing Factors on the Productivity of Knowledge-intensive Services <i>Robert STRANZENBACH, Alexander RANNACHER, Flavius STURM, Susanne MÜTZE-NIEWÖHNER</i>	260
Design Driven Product-Service Innovation in Manufacturing <i>David OPRESNIK, Christian ZANETTI, Marco TAISCH</i>	265
Service Performance Assessment and Governance <i>Marco TAISCH, Mohammadreza HEYDARI ALAMDARI, Christian ZANETTI, Margherita PERUZZINI</i>	270
 QC 1 Quality Control & Management (1)	
Detecting High Incidence by Using Variable Scan Radius <i>Chen-ju LIN, Yi-chun SHU</i>	275
Application of Six Sigma Methodology for a Manufacturing Cell- A Case Study <i>Vijaya KUMAR, V PRASHANT, K N SUBRAMANYA, N S NARAHARI</i>	280
Prediction of Energy Consumption Indices in the Automotive Industry <i>Antonio ALMEIDA, Americo AZEVEDO, Alvaro CALDAS</i>	285
A Mathematical Framework for Parameter Designing Under the Noise: A Case Study from a Conventional Turning Machine <i>R.M. Chandima RATNAYAKE</i>	290
Who Needs to Learn What from Whom? Understanding Quality Management by Differentiating Organisations and Practices <i>Henrik ERIKSSON</i>	295
A Conceptual Readiness Framework for Statistical Process Control (SPC) Deployment <i>Sarina ABDUL HALIM LIM, Jiju ANTONY</i>	300

PP 1 Production Planning & Control (1)

A Fuzzy-based Multi-Term Genetic Algorithm for Reentrant Flow Shop Scheduling Problem <i>I-Hsuan HUANG, Shigeru FUJIMURA</i>	305
The Effect of Metal Noise Factor to RFID Location System <i>Seng Fat WONG, Yi ZHENG</i>	310
Concept of an Intelligent Production Control for Global Manufacturing in Dynamic Environments Based on Rescheduling <i>Gisela LANZA, Nicole STRICKER, Raphael MOSER</i>	315
The Effectiveness Evaluation of Job-shop Scheduling based on Theory of Constraints (TOC) Under Demand Variation <i>Chompoonoot KASEMSET, Uttapol SMUTKUPT, Nichchima ANONGJANYA</i>	320
Task and Worker Assignment in the Shared-Machine U-Shaped Assembly Line <i>Pattarawan KHEMYONG, Ronnachai SIROVETNUKUL</i>	325
Investigation of the Information Generated by Technology Management Tools and Links to Strategic Product Planning Stages <i>Alexander U. REIK, Moritz KING, Udo LINDEMANN</i>	330

SM 1 Systems Modeling & Simulation (1)

Automatic Planning of GPON/FTTH Networks Based on Lagrangian Heuristic Optimization <i>Ling CEN, Kin POON, Zhuliang YU, Anis OUALI</i>	335
Concept for an Integration-framework to Enable the Crossdisciplinary Development of Product-service Systems <i>Konstantin KERNSCHMIDT, Thomas WOLFENSTETTER, Christopher MÜNZBERG, Daniel KAMMERL, Suparna GOSWAMI, Udo LINDEMANN, Helmut KRCCMAR, Birgit VOGEL-HEUSER</i>	340
Functional Analysis and Modeling of Complex, Evolutionary Grown, Mechatronic Products <i>Michael ROTH, Daniel KASPEREK, Udo LINDEMANN</i>	346
Using DSM and MDM Methodologies to Analyze Structural SysML Models <i>Sebastian MAISENBACHER, Konstantin KERNSCHMIDT, Daniel KASPEREK, Birgit VOGEL-HEUSER, Maik MAURER</i>	351
Identifying Signs of Systems Fragility: A Crowdsourcing Requirements Case Study <i>Attila-Peter TOTH, Davor SVETINOVIC</i>	356
Determining Optimal Zone Boundaries for Three-Class-Based Puzzle-Based Compact Storage Systems <i>Linda ZHANG, Yugang YU, Li ZHANG</i>	361
Simulation of Supplier - Manufacturer Relationship Model for Securing Availability of Teak Log in Furniture Industry with Sustainability Consideration <i>Dyah Nurrahmawati Eka PUTRI, Muhammad HISJAM, Wahyudi SUTOPO, Kuncoro HARTO WIDODO</i>	367

EE 1 Engineering Economy & Cost Analysis (1)

The Cost and Benefit Analysis of Taiwan High Speed Railway - With Sustainable Perspectives <i>Hsiao-min CHUANG, Chihpeng CHU</i>	372
---	-----

Reducing Investment Costs in Multi-Variant Mass Production <i>Achim KAMPKER, Heiner Hans HEIMES, Stefan BICKERT, Timon RODENHAUSER</i>	377
Considerations for Commoditization Factors in Flat-Screen TV Industry <i>Hirotooshi UEHARA, Yusuke MAKINO, Hiroyuki NAGANO, Keisuke UENISHI, Shuichi ISHIDA</i>	381
A Parametric Cost Estimation Model to Develop Prototype of Electric Vehicle based on Activity-Based Costing <i>Rakhman ARDIANSYAH, Wahyudi SUTOPO, Muhammad NIZAM</i>	385
Software Test Estimation Tools using Use Cases and Functions <i>Shaiful ISLAM, Bishwajit Banik PATHIK, Manzur H. KHAN, Md. Mamun HABIB</i>	390
 PM 1 Project Management (1)	
Optimal Scheduling of Work-Content-Constrained Projects <i>Philipp BAUMANN, Norbert TRAUTMANN</i>	395
Solving a New Mixed Integer Non-linear Programming Model of the Multi-Skilled Project Scheduling Problem Considering Learning and Forgetting Effect on the Employee Efficiency <i>Erfan MEHMANCHI, Shahram SHADROKH</i>	400
An Empirical Study of Critical Success Factors of Project Governance in China <i>Wenwen XIANG, Ying LI, Yongyi SHOU</i>	405
Elimination of Waste Through Value Add/Non Value Add Process Analysis To Improve Cost Productivity in Manufacturing - A Case Study <i>Kam-Choi NG, Chun Pei LIM, Kuan Eng CHONG, Gerald Guan Gan GOH</i>	410
Schedule Risk Analysis in Construction Project Using RFMEA and Bayesian Networks: the Colombia Case Study <i>Camilo Andres MICAN RINCON, Victor Javier JIMENEZ, Jessica PEREZ, Alejandro BORRERO</i>	415
Fuzzy Decision Model for Construction Contractor's Selection in Egypt: Tender Phase <i>Hossam HASSAAN, Nashaat FORS, Mostafa SHEHATA</i>	420
 EB 1 E-Business & E-Commerce (1)	
Internet Usage Trend and Postal Service Performance in Australia <i>Sung SHIM, Arun KUMAR, Hasan HAKAMI</i>	427
Measuring the Performance of Viral Marketing based on the Dynamic Behavior of Social Networks <i>Atikhom SIRI, Trasapong THAIUPATHUMP</i>	432
Mobile Stock Trading (MST) and its Social Impact: A Case Study in Hong Kong <i>Kin Meng SAM, Chris CHATWIN, Iat Cheng MA</i>	437
How Sense Qualities Influence User Preference of E-commerce Website <i>Dunxing WANG, Junxiu ZHANG</i>	442
Research on Product Common Attribute Model with Consumption Value Theory Applied in Food industry <i>Tsung-Yi CHEN, Yan-Chen LIU, Yuh-Min CHEN</i>	447
Incorporating Location, Routing and Inventory Decisions in Dual Sales Channel - A Hybrid Genetic Approach <i>Chia-lin HSIEH, Shu-hsien LIAO, Wei-chung HO</i>	452

RM 1 Reliability & Maintenance Engineering (1)

Product Support Logistics Based on System Reliability Characteristics and Operating Environment <i>Behzad GHODRATI, Alireza AHMADI</i>	457
Reliability Analysis Based on Network Traffic for a Mobile Computing <i>Yoshinobu TAMURA, Shigeru YAMADA</i>	462
Interval Estimations of Software Reliability and Optimal Release Time Based on Better Bootstrap Confidence Intervals <i>Shinji INOUE, Shigeru YAMADA</i>	467
Production Reliability Evaluation of Continuum-State Manufacturing System Based on Universal Generating Function <i>Fen KUANG, Wei DAI, Yu ZHAO</i>	472
Multi-Response Surface Optimization Using Axiomatic Design <i>Vijay RATHOD, Om Prakash YADAV, Ajay Pal Singh RATHORE</i>	477
Accelerated Life Tests for Data Acquisition Devices used in Smart Grids <i>Lijuan SHEN, Xuan LIU, Zhi-Sheng YE</i>	482

SR 1 Safety, Security & Risk Management (1)

Resilience of Transport Systems Under Disaster: Simulation-based Analysis of 2011 Tsunami in Japan <i>Paolo TRUCCO, Nobuaki MINATO, Nicola CARERI</i>	487
A Study of Semiconductor Industry Accidents: Making Predictions Based on BP Artificial Neural Networks <i>Chao LIU, Hsuan PEICHEN, Wu JIANPING</i>	492
Estimating Reporting Culture and Its Link to Safety Performance by Applying Hemodialysis Error Taxonomy <i>Xiuzhu GU, Kenji ITOH</i>	497
Risk Profiling in Asymmetric Warfare through Intelligent Analysis of Images and Neural Networks <i>Prem K KALRA, Rajkumar VISHWAKARMA</i>	502
Merging Habitus into Safety Risk Management: A Case from the U.S. Construction Industry <i>Dong ZHAO</i>	507
Relationship Between Working Postures and MSD in Different Body Regions Among Electronics Assembly Workers in Malaysia <i>Roseni ABDUL AZIZ, Mat Rebi ABDUL RANI, Jafri MOHD ROHANI, Ademola James ADEYEMI, Nurlyana OMAR</i>	512

GM Global Manufacturing & Management

The Use of Improvement Tools: a Comparison Between Sectors and Industries <i>Dotun ADEBANJO, Matthew TICKLE, Frank OJADI, Robin MANN</i>	517
The Impact of Absorptive Capacity on Post-Acquisition Financial Performance: The European ICT Data <i>Mait RUNGI, Valeria STULOVA</i>	522

Efficient Optimization Methods for Extended Flow Path Design <i>Julie RUBASZEWSKI, Alice YALAOUI, Lionel AMODEO, Sylvain FUCHS</i>	527
Motivations and Criteria for Partner Selection in Innovation Alliance <i>Xiao-li CHEN, Ralph RIEDEL, Egon MUELLER</i>	532
Industry Clusters and Business Ecosystems- The Smart Mobile Industry in Taiwan <i>Yan-Ru LI, Wen-Zhe YANG</i>	537
Linkages Influencing NPD-SCM Alignment - Evidence from Indian Automotive Industry <i>Ankur PAREEK, Ajay Pal Singh RATHORE, Rakesh JAIN</i>	541
Poster Session 1	
Comparison of the Predetermined Time Systems MTM-1 and BasicMOST in Assembly Production <i>Marek BURES, Pavlina PIVODOVA</i>	546
Cyclic Production for Robotic Cells Served by Multi-function Robots with Resumable Processing Regime <i>Mehdi FOUMANI, Yousef IBRAHIM, Indra GUNAWAN</i>	551
Study on Design Change Review for Small and Medium-sized Enterprises <i>Xiaonan YU, Zhibing YANG, Guoxin WANG, Jiping LU</i>	556
Load Forecasting Assessment using SARIMA Model and Fuzzy Inductive Reasoning <i>Nestor GONZALEZ CABRERA, Guillermo GUTIERREZ, Esteban GIL</i>	561
The Evaluation Model for Cooperate Social Responsibility from a Management Flexibility Perspective <i>Tyrone T. LIN, Tai-Chi HUANG</i>	566
A Green Logistics Evaluation Model with Real Options Approach <i>Tyrone T. LIN, Yu-Shyuan LU</i>	571
A Study On The Statistical Comparison Methods for Engineering Applications <i>Serena JI, Randy KANG, Lisa YU, Weiting Kary CHIEN</i>	576
The Research of Online Shopping Evaluation Based on Grey Linguistic Multiple Criteria Decision Making System <i>Zhifeng LI, Liyi ZHANG</i>	581
A Fuzzy Simulated Evolution Algorithm for Multi-Objective Homecare Worker Scheduling <i>Michael MUTINGI, Charles MBOHWA</i>	586
Reliable Cooperative and Backup Covering in Disaster Situations <i>Ladan HAZRATI ASHTIANI, Mehdi SEIFBARGHY, Mahdi BASHIRI</i>	591
Model-Following Controller Design based on a Stabilized Digital Inverse System <i>Ryo TANAKA, Hiroki SHIBASAKI, Hiromitsu OGAWA, Takahiro MURAKAMI, Yoshihisa ISHIDA</i>	595
Simulation of Departure Terminal in Soekarno-Hatta International Airport <i>Dimas NOVRISAL, Nuraida WAHYUNI, Nadia HAMANI, Abderrahman ELMHAMED, Tresna SOEMARDI</i>	600
Enhanced Viability in Organizations: An Approach to Expanding the Requirements of the Viable System Model <i>Fatos ELEZI, Michael SCHMIDT, Iris TOMMELEIN, Udo LINDEMANN</i>	605
Deadlock Avoidance Policy for Dual-armed Multi-cluster Tools with Multi-flow <i>Yushin WATANABE, Tatsushi NISHI</i>	611

An Additive Manufacturing Resource Process Model for Product Family Design <i>Ningrong LEI, Seung Ki MOON, Guijun BI</i>	616
Risk Sources and Their Influences on Consumers' Purchase Intention: A Research on Online Catering Group Buying <i>Shao-Hua WANG, Yi Wen CHEN, Xi CHEN</i>	621
Trade-In Concept for the Environment <i>Romeo MANALO, Marivic MANALO</i>	626
Innovation in Family-owned Food Companies in Japan <i>Yasuaki YAMASAKI, Kiminori GEMBA</i>	631
A Study of Tourism Promotion Factors Affecting Tourists' Demand in Thailand <i>Namtip SAKULNGAM, Sukree SINTHUPINYO, Natcha THAWESAENGSKULTHAI, Supol DURONGWATANA</i>	636
The Conceptual Model of Negative Experiences Regarding the Facilities at Family Trip Destinations - A Case Study of Tourism Factories <i>Hsin-Yen WU, Ching-Yu LIEN</i>	641
Quality Control of Subcontractor Management in Wafer Foundry <i>Wenwen HE, Kelly YANG</i>	645
The Impact of Teacher and Peer Communication on Adolescents' Learning Outcomes – Positive Perception Makes Better Performance <i>Jianhong LI, Gangyu JIN, Yi Wen CHEN</i>	650
Determining and Classifying Drivers of Sustainable Competitive Advantages in Green Supply Chain Management: Resource-Based and Relational Views <i>Nisakorn SOMSUK, Pongtiwa PONGPANICH, Sombat TEEKASAP</i>	655
 TK 4 Technology & Knowledge Management (4)	
Perfect Interaction: Facilitating Evaluation of Collaborative Technologies for User Engagement in Engineering Innovation Networks <i>Roula MICHAELIDES, Susan MORTON</i>	661
Universities Coping in the Changing Environment: Case LUT CST <i>Matti KARVONEN, Vesa KARVONEN, Jyri VILKO, Tuomo KÄSSI</i>	668
Drilling Waste Handling and Management in the High North <i>Yonas Zewdu AYELE, Abbas BARABADI, Javad BARABADY</i>	673
Forecasting the Success of Knowledge Management Adoption in Supply Chain <i>Sachin PATIL, R. KANT</i>	679
Configuration of High Performance Apartment Buildings Renovation: A Constraint Based Approach <i>Elise VAREILLES, Andrés Felipe BARCO SANTA, Marie FALCON, Michel ALDANONDO, Paul GABORIT</i>	684
Product Data Management and Sheet Metal Features – Sheet Metal Part Recognition for an Easier Designing Process Producing Manufacture-friendly Products <i>Merja HUHTALA, Mika LOHTANDER, Juha VARIS</i>	689
 TK 5 Technology & Knowledge Management (5)	
Commercialization of Early Stage University-based Inventions <i>Matti KARVONEN, Rahul KAPOOR, Ville OJANEN, Jussi HEINIMÖ, Hannu TERVONEN</i>	694

Research on Radical Innovation Design Process on the Stage of Fuzzy Front End by TRIZ <i>Enshun PING, Runhua TAN, Jianguang SUN, Lizhen JIA</i>	699
Patent Portfolio Analysis Using Citation Categories <i>Rahul KAPOOR, Samira RANAELI, Matti KARVONEN, Tuomo KÄSSI</i>	704
Agility of Capability Development: The Multiple-Case Study of Ericsson, Google, Microsoft and Nokia <i>Alar KOLK, Mait RUNGI</i>	709
Enhancing NPD Operational Performance Through B2B and B2C Customer Involvement for Varying Degrees of Product Technology <i>Dinush WIMALACHANDRA, Bjoern FRANK, Takao ENKAWA</i>	714
Knowledge Capitalization and Synthesis for Integrated Circuit Manufacturing in Thailand <i>Suthep BUTDEE, Varavut HIRUNYASIRI</i>	719
 OR 3 Operations Research (3)	
A Note on Dynamic Programming Formulations for Scheduling Job Classes with Changeover Times on a Single Machine <i>Eiji MIZUTANI</i>	723
Modeling Multi-stage Assembly Systems with Finite Capacity as a Queueing Network <i>Saeed YAGHOUBI, Amir AZARON</i>	728
Batching and Sequencing of Incompatible Job Families for a Single Machine Problem <i>Mohamed K. OMAR, Yasothei SUPPIAH</i>	733
Complexity Analysis of the Discrete Sequential Search Problem with Group Activities <i>Kris COOLEN, Roel LEUS, Fabrice TALLA NOBIBON</i>	738
The Development of Heuristic for Solving Multi Objective Mark Planning Problem in Garment Industry <i>Kritsada PUASAKUL, Paveena CHAOVALITWONGSE</i>	743
Optimization Model for Part Nesting for Packing Problem <i>Mojahid SAEED OSMAN</i>	748
 OR 4 Operations Research (4)	
A Stochastic Programming Formulation to Minimize the Total Traveling Cost on the Northern Sea Route <i>Jinho LEE, Seongho BAEK</i>	753
Restoration of Randomized Model Characteristics under Small Amounts of Data: Entropy-Robust Estimation <i>Yuri POPKOV, Alexey POPKOV</i>	757
A Model of Placing Liaisons in Multi-levels of an Organization Structure of a Complete Binary Tree Minimizing Total Distance <i>Kiyoshi SAWADA</i>	762
Sequential Testing of 3-level Deep Series-parallel Systems <i>Gurkan IŞIK, Tonguc ÜNLÜYURT</i>	766

Influence of Cutting Parameters in Face Milling of Nodular Cast Iron Grade 500 Using Carbide Tool
Affect the Surface Roughness and Tool Wear 771
Surasit RAWANGWONG, Worapong BOONCHOUYTAN, R. BURAPA, J. CHATTHONG

The Role of Purchasing Management Towards Sustainable Supply Chain: A Lifecycle Perspective 776
Kamonmarn JAENGLOM, Zaheer TARIQ

HF 2 Human Factors (2)

A Study of Affective Meanings Predicting Aesthetic Preferences of Interactive Skins 781
Shih-Miao HUANG

The Discussion of Machinery Manufacturing Industry Employees' Self-Efficacy, Organizational Learning and job Performance: The Example of Taichung Industrial Park 786
Tzue-Hwa JIANG, Shien-Liang CHEN

Comparison of AHP and Fuzzy AHP Methods for Human Resources in Science Technology (HRST) Performance Index Selection 792
Ying-Chyi CHOU, Hsin-Yi YEN, Chia-Chi SUN, Jau-Shin HON

Generating a Research Keyword Structure on Human Haptic Interaction using a Social Network Analysis Tool 797
Joobong SONG, Ji Hyoun LIM, Sanghyun KWON, Ilsun RHIU, Byungki JIN, Sangoo BAHN, Myung Hwan YUN

Emotional Mental Model 802
Constantin VON SAUCKEN, Ioanna MICHAILEDIOU, Udo LINDEMANN

Preliminary Study on Systematic Literature Review of Vision Research 807
Y. L. RHIE, Ji Hyoun LIM, S. H. AHN, G. W. KIM, Myung Hwan YUN

ET Engineering Education & Training

Triple Constraint Considerations in the Management of Construction Projects 813
Tshweu MOKOENA, Jan Harm PRETORIUS, Jurie VAN WYNGAARD

From the Development of Robots to the Management of Organizations – a Discussion of the Integrative Approach of the Industrial Engineering Discipline 818
Sigal KORAL-KORDOVA, Moti FRANK, Arik SADEH

Knowledge Transfer Practices at Indian Premier Institute of Higher Learning in Technology 823
Kalyan Kumar BHATTACHARJEE, Ravi SHANKAR, M. P. GUPTA

Exploring the Required Personality Traits for Automotive Technician: A Human Resource Development Perspective 828
Hsiu-Te SUNG, Han-Jau NIU

Evaluation of a Restful Web Services Driven Three Dimensional E-learning Platform with Mashup for Ubiquitous and Personalized Learning 833
Chuan-Jun SU, P. T. LIU, Cheng HUANG

DM 2 Decision Analysis & Methods (2)

Stochastic Total Cost of Ownership Forecasting for Innovative Urban Transport Systems 838
Dietmar GOEHLICH, Felix SPANGENBERG, Alexander KUNITH

Semiconductor Yield Loss' Causes Identification : A Data Mining Approach <i>Hasna BARKIA, Xavier BOUCHER, Rodolphe LE RICHE, Philippe BEAUNE, Marie-Agnès GIRARD, D. ROZIER</i>	843
P2CLUST: an extension of PROMETHEE II for ordered clustering <i>Yves DE SMET</i>	848
Selection of Non-traditional Machining Processes: A Distance Based Approach <i>Tonmoy CHOUDHURY, Partha Pratim DAS, Manish ROY, Ishwar SHIVAKOTI, Amitava RAY, B PRADHAN</i>	852
Modeling Brain and Behavior of a Terrorist through Fuzzy logic and Ontology <i>Rajkumar VISHWAKARMA, R. SHANKAR</i>	857
Vehicle Scheduling Problem: A Comparative Study between Light Truck and Motorcycle in Small Patisserie Network <i>Chivalai TEMIYASATHIT, Phathinan THAITHATKUL</i>	862
 DM 3 Decision Analysis & Methods (3)	
Application of Extreme Value Theory in Commodity Markets <i>Usha ANANTHAKUMAR, Ashwin DURGA</i>	867
Change Propagation Analysis for Sustainability in Product Design <i>Sam Yeon KIM, Seung Ki MOON, Hyung Sool OH, Taezoon PARK, Gyouhyung KYUNG, Kyoung Jong PARK</i>	872
Equilibrium Strategy of a Processor-Sharing System with Discriminatory Discipline <i>Ying SHI, Zhaotong LIAN</i>	877
Weighted Additive Fuzzy Goal Programming-based Decision Support System for Green Supply Network Design <i>Kanda BOONSOTHONSATIT, Sami KARA, Berman KAYIS, Suphunnika IBBOTSON</i>	882
Multiple Criteria Model for Evaluation and Selection of Outsourcing Service Countries: A Case Study in the East and Southeast Asia <i>James K. C. CHEN, Van Kien PHAM, Chih-Sung CHANG, Thi Le Huyen NGUYEN</i>	887
Hotel Classification Visualization Using Natural Language Processing of User Reviews <i>Takayuki SUZUKI, Kiminori GEMBA, Atsushi AOYAMA</i>	892
 SC 3 Supply Chain Management (3)	
Pricing Strategy of Closed-loop Supply Chain Based on Premium and Penalty Mechanism <i>Juhong GAO, Wang HAIYAN, Han HONGSHUAI, Hou LITING</i>	896
3-Echelon Distribution Policy with Order Flexibility and Direct Ordering System <i>Yosi Agustina HIDAYAT, Lucia DIAWATI, Yudi THADDEUS, Seto SUMARGO</i>	901
Supply Chain Management: Workforce Education <i>Regena SCOTT, Edith SCHMIDT</i>	906
Experiences from an NSF I/UCRC on Engineering Logistics and Distribution <i>Babur PULAT, Thomas LANDERS, Pakize PULAT, Cengiz ALTAN, Zahed SIDDIQUE</i>	911
Factor Analysis of Rational Trust among Supply Chain Partners in Indian Industries <i>Gaurav TEJPAL, Rajiv Kumar GARG, Anish SACHDEVA</i>	915
Designing Supply Chain Analysis Tool Using SCOR Model (Case Study in Palm Oil Refinery) <i>Fitra LESTARI, Kamariah ISMAIL, Abu Bakar ABDUL HAMID, Wahyudi SUTOPO</i>	919

SC 4 Supply Chain Management (4)

Demand Information Sharing Impact on Supply Chain Management under Demand Uncertainty. A Simulation Model <i>Ana Paula BARROSO, Virginia MACHADO, Virgilio CRUZ-MACHADO</i>	924
Models for the Optimization of Supply Chains - A Literature Review <i>Florian G. H BEHNCKE, Julia EHRHARDT, Udo LINDEMANN</i>	929
Modeling and Optimization of Inventory and Sourcing Decisions with Risk Assessment in Perishable Food Supply Chains <i>Zheng REN, Arjaree SAENGSAATHIEN, David ZHANG</i>	934
Developing a Two-echelon Inventory Model with Simultaneous Consideration of Backorders and Lost Sales <i>S. Kamal CHAHARSOOGHI, Hassan YADEGARI</i>	940
Decision Trees to Model the Impact of Disruption and Recovery in Supply Chain Networks <i>Loganathan PONNAMBALAM, Leow WENBIN, Xiuju FU, Xiao Feng YIN, Zhaoxia WANG, Rick Siow Mong GOH</i>	948
Research on the Formation of Supply Chain Carbon Emission Reduction Union Based on Voluntary Emission Reduction <i>Yan PENG, Zhuoran SHI</i>	953

SC 5 Supply Chain Management (5)

Using Fuzzy Inference Systems to Improve Purchasing Process-Related Decisions <i>Javier PUENTE, Isabel FERNANDEZ, Nazario GARCÍA, Paolo PRIORE</i>	958
A Comparison of Forecasting Models using Multiple Regression and Artificial Neural Networks for the Supply and Demand of Thai Ethanol <i>Rojanee HOMCHALEE, Weerapat SESSOMBOON</i>	963
Reliability-based Decision Analysis for Ready Mixed Concrete Supply Chain Using Stochastic Method <i>Jui-Sheng CHOU, Citra ONGKOWIJOYO</i>	968
A Review of Data Development Analysis (DEA) Applications in Supply Chain Management Research <i>Woramol CHAOWARAT, Pairach PIBOONRUGNROJ, Jianming SHI</i>	975
3PL Selection: A Multi-criteria Decision Making Approach <i>Ankit BANSAL, Pravin KUMAR, Siddhant ISSAR</i>	981
A Bilevel Model for Transportation Service Sharing in Supply Hub in Industrial Park (SHIP) <i>Xuan QIU, Gangyan XU, George HUANG</i>	986

SC 6 Supply Chain Management (6)

A Hierarchical Demand-driven Production Planning and Control Framework for the FMCG Industry: An SAP-based Approach <i>Poorya FARAHANI, Renzo AKKERMAN, Joerg WILKE</i>	991
The Merging of MPS and Order Acceptance in a Semi-Order-Driven Industry: A Case Study of the Parasol Industry <i>Watcharee WATTANAPORNPRON, Tieke LI</i>	996

Information Security Risk Assessment in SCM <i>Arup ROY, A D GUPTA, S.G. DESHMUKH</i>	1002
On Development of Supplier Segmentation Ontology Using Latent Semantic Analysis for Supplier Knowledge Management in Supply Chain <i>Anirban KUNDU, Vipul JAIN</i>	1007
Remanufacturing Intermittent Demand Forecast: A Critical Assessment <i>Prerna MISHRA, Xue-Ming YUAN, Guangbin HUANG, Laura Xiao Xia XU</i>	1012
Sustainable Logistics Systems: A Framework and Case Study <i>Sooksiri WICHAISRI, A. SOPADANG</i>	1017

QC 2 Quality Control & Management (2)

Use of Engineering Robust Design Approach to Improve the Surface Quality of Pre-cast Concrete Elements: An Experimental Approach <i>Samindi SAMARAKOON, R.M. Chandima RATNAYAKE</i>	1022
Reducing Defects and Achieving Business Profitability using Innovative and Lean Thinking <i>Amol LANKE, Behzad GHODRATI</i>	1026
A Computational Geometric Approach For A Novel Multivariate Process Capability Index <i>Birajashis PATTNAIK, Sushanta TRIPATHY</i>	1031
Assessing SMEs Batik Readiness for SNI Adoption (Case Study SMEs Solo and Yogyakarta) <i>Aries SUSANTY, Dyah IKA RINAWATI, Bambang PURWANGGONO, Diana PUSPITASARI, Meylani</i>	1036
PHM for Complex Mining and Metallurgy Equipment Multi-state System Based Optimal Multivariate Bayesian Model <i>Jianjun WU, Shilang WU, Xiongxiang YOU</i>	1042
Composite Practices to Improve Sustainability: A Framework and Evidence from Chinese Auto-parts Industry <i>Zhen WANG, Nachiappan SUBRAMANIAN, Muhammad ABDULRAHMAN, Chang LIU</i>	1047

HS 1 Healthcare Systems & Management (1)

Stand-Alone Electronic Health Record <i>Julio DUARTE, Gabriel PONTES, Maria SALAZAR, Manuel SANTOS, Antonio ABELHA, Jose MACHADO</i>	1052
Analysis of Cross-Platform Development Frameworks for a Smartphone Pediatric Application <i>Rui OLIVEIRA, Gabriel PONTES, Jose MACHADO, Antonio ABELHA</i>	1057
Quality Improvement of General Out-patient Clinics in Hong Kong <i>C. M. CHAN, T. C. WONG</i>	1062
Resource Allocation in Healthcare: Implications of Scarce Resources and Temporal Constraints <i>Juha PUUSTJÄRVI, Leena PUUSTJÄRVI</i>	1067
Relationship between Polymeric Foam Characteristics and Properties of Porous Bone Substitute Fabricated by Polymeric Foam Replication <i>Wassanai WATTANUTCHARIYA</i>	1072
A Fuzzy Particle Swarm Optimization Approach for Task Assignment in Home Health Care <i>Michael MUTINGI, Charles MBOHWA</i>	1077

HS 2 Healthcare Systems & Management (2)

- Extending a Patient Monitoring System with Identification and Localisation 1082
Fernando MARINS, Rui RODRIGUES, Carlos Filipe PORTELA, Manuel SANTOS, Antonio ABELHA, Jose MACHADO
- Integrating RFID with Blood Supply Chain: A Technical and Business Analysis 1087
Wei XU, Zhaotong LIAN, Xifan YAO
- An Intelligent Approach for Open Clinical Laboratory Results in Intensive Care Medicine 1092
Carlos Filipe PORTELA, Manuel SANTOS, Jose MACHADO, Antonio ABELHA, Á lvaro SILVA, Fernando RUA
- KIDEA : An Innovative Computer Technology To Improve Skills In Children With Intellectual Disability Using Kinect Sensor 1097
Warih Puspitasari SOESATYO, Kholifatul UMMAH, Ainu PAMBUDI
- A Risk-adjusted Multi-attribute Cumulative Sum Control Scheme in Health-care Systems 1102
Sayyede Nastaran SHOJAEI, S. T. A. NIAKI
- Home Healthcare Staff Scheduling: A Taxonomic State-of-the-Art Review 1107
Michael MUTINGI, Charles MBOHWA

SI 2 Service Innovation & Management (2)

- Adopt-A-Community Framework 1112
Romeo MANALO, Marivic MANALO
- Process Improvement – A Positive Deviance Approach 1117
Ayon CHAKRABORTY
- Dynamic Pricing in Performance Theater Industry: An Empirical Study 1122
Naragain PHUMCHUSRI
- Quantifying the Service Level and Manpower Needs of Food Courts in Singapore 1127
Wing Tai CHUNG, Xin ZHONG, Han Tong LOH
- IMU-WPS Hybrid Position Estimation Test-Bed Development 1132
Byoung-seop KIM, Suk-yon KANG, Jae-hoon KIM

SM 2 Systems Modeling & Simulation (2)

- Detecting Hierarchical Community Structures in Social Networks Using Integer Linear Programming 1136
Chun-Cheng LIN, Jia-Rong KANG, Jyun-Yu CHEN, Chien-Liang CHEN
- Simulation Modeling Analysis to Support Decision Making of Cassava Harvesting in Thailand 1141
Warut PANNAKONG, Jirachai BUDDHAKULSOMSIRI, Parthana PARTHANADEE
- Development of an Assessment Procedure for the Problem-Specific Selection of Most Suitable Modeling Methods for Complex Systems 1146
Daniel KASPEREK, Konrad PETERS, Sebastian MAISENBACHER, Maik MAURER
- Optimum Design and Analysis of Riser for Sand Casting 1151
Chandrashekar CHOUDHARI, Balkrishna Eknath NARKHEDE, S K MAHAJAN
- A SIS Epidemic Model with Impulsive Vaccination 1156
Manuel DE LA SEN, Santiago ALONSO-QUESADA, Asier IBEAS

Representing Ontologies in Multiple Domain Matrices 1162
Daniel KASPEREK, Ragna STEENWEG, Sebastian MAISENBACHER, Kathrin JASMIN FÜLLER, Helmut KRCCMAR, Maik MAURER

QC 3 Quality Control & Management (3)

A New Method for Metrology Monitor Charts 1166
Jinyi MA, Kaily CAO, Weiting Kary CHIEN

Critical Practices in TQM Human Resources Development 1170
Masayoshi USHIKUBO, Hisato TASHIRO, Nobuzumi FUJII, Kazuya NAKAJIMA, Ichiro SAKATA

An Enhancement for Single Sampling Plan Method 1174
Randy KANG, Lisa YU, Weiting Kary CHIEN

The Quality Control Application for Abnormal Raw Material Early Detection 1179
Violet SHANGGUAN, July SHUI, Kevin CHANG

Total Productive Maintenance Strategy in a Semiconductor Manufacturer: A Case Study 1184
Kam-Choi NG, Kuan Eng CHONG, Gerald Guan Gan GOH

PP 2 Production Planning & Control (2)

Operational Control of Service Processes: Empirical Evidence from the Financial Sector in Australia 1189
Michael LEYER, Richard WILLIS, Ayon CHAKRABORTY, Jürgen MOORMANN

Quantifying the Impact of Using Multi-function Robots on Productivity of Rotationally Arranged Robotic Cells 1194
Mehdi FOUMANI, Yousef IBRAHIM, Indra GUNAWAN

Analysis of the Effects of Flexibilities on Scheduling A Flexible Manufacturing System Using Discrete-Event Simulation 1199
O. A. JOSEPH, R SRIDHARAN

A State-of-the-Art Workload Control System for Customized Industry 1204
Yuan HUANG

Requirement Derivation for the Factory Planning in the Automobile Industry through Strategic Scenario Generation 1209
Egon MUELLER, Mario MÜNNICH, Jens KELLERBACH, Siegfried FIEBIG

An Integrated Production Planning and Order Acceptance Model with Flexible Due Dates 1214
Tarik AOUAM, Nadjib BRAHIMI

PP 3 Production Planning & Control (3)

A Mathematical Model on an Economic Lot Scheduling Problem with Shifting Process and Joint Material Replenishment 1219
Dah-Chuan GONG, Jhin-Yong LIN, Gary C. LIN, Wen-Na MA

Parallel-machine Scheduling with General Positional Deterioration and Maintenance 1223
Shijin WANG

Critical Mapping of Sustainable Index Methodologies 1228
Marco TAISCH, Jing SHAO

Lagrangian Relax and Fix Heuristics for Integrated Production Planning and Warehouse Layout Problem <i>Keisuke OHGA, Tatsushi NISHI, Guoqing ZHANG, Sarina TURNER</i>	1233
The Production Planning of Pharmaceutical Production Under Multi Variables. <i>Suleeporn CHAOLAEM, Tuanjai SOMBOONWIWAT, Suksan PROMBANPONG</i>	1238
Improving The Efficiency of Ordering Policy: An Application In a Class-A Spare Part <i>Chivalai TEMIYASATHIT, Natthanun JANGSETTHAGUL</i>	1243

PM 2 Project Management (2)

Matrices-based Modeling of Communication within Planning Projects <i>Bernd PETRAUS, Roman ARNOLD, Ralph RIEDEL, Egon MUELLER</i>	1248
The Identification of Limiting and Enabling Factors of the Organization on the Development of Platform-based Products <i>Wolfgang BAUER, Fatos ELEZI, Florian HOMANN, Maik MAURER</i>	1253
Activity-based Process Model for Customer-driven Product Development <i>Anita Friis SOMMER, Iskra DUKOVSKA-POPOVSKA, Kenn STEGER-JENSEN</i>	1259
Deliberating the Triple Constraint Trade-offs as Polarities to Manage – a Refreshed Perspective <i>C. Jurie VAN WYNGAARD, Jan Harm PRETORIUS, Leon PRETORIUS</i>	1265
Construction of Ecological Niche Model of Projects under Management by Project Pattern in Enterprise <i>Kexin HUANG</i>	1273
Scrum Integration in Stage-gate Models for Collaborative Product Development - A Case Study of Three Industrial Manufacturers <i>Anita Friis SOMMER, Andreas SLAVENSKY, Vivi Thuy NGUYEN, Kenn STEGER-JENSEN, Iskra DUKOVSKA-POPOVSKA</i>	1278

EE 2 Engineering Economy & Cost Analysis (2)

Functional Assessment for Large-scale Wind-hydrogen Energy Integration Electricity Supply System in Taiwan <i>Pao-Long CHANG, Chiung-Wen HSU, Chih-Min HSIUNG</i>	1283
Model for Integrated Value Engineering <i>Sebastian MAISENBACHER, Florian G. H BEHNCKE, Udo LINDEMANN</i>	1288
Revenue and Utility Maximization under Centralized Dynamic Spectrum Allocation <i>Hailing ZHU, Andre L NEL, Mbuyu SUMBWANYAMBE, Ling CHENG</i>	1293
Challenges of Performance Assessments for Engineering Departments: Empirical Study and Further Results <i>Michael GEPP, Michael AMBERG, Stefan HORN, Thomas SCHAEFFLER</i>	1299
The Optimization of Maintenance Time and Total Site Crew for Base Transceiver Station (BTS) Maintenance Using Reliability Centered Maintenance (RCM) and Life Cycle Cost (LCC) <i>Rohmat SAEDUDIN, Rino ANDIAS ANUGRAHA, Rachmad EKA</i>	1304

IP Information Processing & Engineering

- Scalable Clustering with Adaptive Instance Sampling 1309
JaeKyung YANG, ByoungJin YU, MyoungJin CHOI
- Integrated Information Modeling of Engineering Digital Prototyping for Satellite Design 1314
Xu ZHANG, Kai WANG, Haoqi WANG, Zheng XIE
- About the Power Transfer in Linear Time-Varying Circuits 1319
Manuel DE LA SEN, Santiago ALONSO-QUESADA, Aitor GARRIDO, Asier IBEAS
- A Methodology for Designing an Interoperable Industrial Ecosystems, using the Axiomatic Design Theory 1324
Izunildo CABRAL, Pedro ESPADINHA-CRUZ, Antonio GRILO, Antonio GONÇALVES-COELHO, Antonio MOURAO
- An Approach of Generative Design System: Jewelry Design Application 1329
Somlak Wannarumon KIELAROVA, Prapasson PRADUJPHONGPHET, Erik BOHEZ
- An Algorithmic Frame of Hybrid Position Estimation for a Mobile Handset 1334
Hyun Min JEON, Suk-Yon KANG, Jae-hoon KIM

FP Facilities Planning & Management

- Minimizing Port Staying Time for Container Terminal with Position Based Handling Time 1339
Helen MA, Felix CHAN, Nick CHUNG, Ben NIU
- Creation of FCEV Market: A New Approach to the Emerging Economy of Self-sustainability 1344
Takuya HASEGAWA, Hitoshi IGARASHI, Kiminori GEMBA
- Optimization of Facility Location Problem in Reverse Logistics Network using Artificial Bee Colony Algorithm 1348
Shu Zhu ZHANG, Carman Ka Man LEE
- Bat Algorithm for Designing Cell Formation with a Consideration of Routing Flexibility 1353
Wipada PARIKA, Wipada SEESUAYSOM, Srisatja VITAYASAK, Pupong PONGCHAROEN
- A Two-Stage Mathematical Model for Cross-Docking Distribution Planning Solved by a Two-Stage Heuristic Algorithm 1358
S. M. MOUSAVI, Ali SIADAT, Reza TAVAKKOLI-MOGHADDAM, Behnam VAHDANI
- Prediction on the Energy Or Power Structure Under the Constraint of Saving Energy and Carbon Emissions 1363
Tuo Chen LI, Lin QIAO

EB 2 E-Business & E-Commerce (2)

- Optimizing Concurrent Configuration and Planning: A Proposition to Reduce Computation Time 1367
Paul PITIOT, Michel ALDANONDO, Elise VAREILLES, Thierry COUDERT, Linda ZHANG
- DYNAMOD: A Modelling Framework for Digital Businesses based on Agent Based Modeling 1372
Aneesh ZUTSHI, Antonio GRILO, Ricardo JARDIM-GONCALVES
- Performance Management for Inter-organization Information Systems performance: Using the Balanced Scorecard and the Fuzzy Analytic Hierarchy Process 1377
Yi-Hui LIANG

Exploring E-readiness on E-commerce Adoption of SMEs: Case Study South-East Asia <i>James K. C. CHEN, Nila Armelia WINDASARI, Pai ROSE</i>	1382
The Construction of Service Innovation of Green Bed and Breakfast (B&B) <i>Tain-Fung WU, Ming-Yu YANG, Shien-Liang CHEN</i>	1387
Sourcing under Incomplete Information about Suppliers <i>Jishnu HAZRA, B MAHADEVAN</i>	1391

RM 2 Reliability & Maintenance Engineering (2)

Remaining Useful Life Prediction for a Hidden Wiener Process with an Adaptive Drift <i>Zeyi HUANG, Zhengguo XU</i>	1396
Reliability Analysis of Condition Monitoring Data on Aging Plants: A Case Study From Topside Static Mechanical Systems <i>R.M. Chandima RATNAYAKE, Mayang KUSUMAWARDHANI</i>	1401
Human Reliability and Workload in Product Design with different Frequencies of Interruption <i>Raymond DJALOEIS, Soenke DUCKWITZ, Malte HINSCH, Joerg FELDHUSEN, Christopher M. SCHLICK</i>	1406
Maintenance-based Warranty for Offshore Wind Turbines <i>Yiliu LIU, Lijuan DAI</i>	1411
Prediction of Further Operation Based on Vehicle Tribo Data <i>David VALIS, Libor ZAK, Jiri CHALOUPKA</i>	1416

RM 3 Reliability & Maintenance Engineering (3)

Coast Down Time Analysis for Condition Monitoring: An Experimental Investigation to Study the Effects of Bearing Lubrication and Shaft Misalignment in Rotating Machinery <i>K P RAMACHANDRAN, Rameshkumar RAMASWAMY, Lubulubah Hatif AL HATMI</i>	1421
Estimation of Residual Life based on Vehicle Tribo Data <i>David VALIS, Ondrej POKORA</i>	1427
An Inspection-maintenance Strategy for Heterogeneous Systems with Measurable Degradation <i>Zhi-Sheng YE, Mimi ZHANG, Xun XIAO</i>	1432
Condition Based Optimal Maintenance Strategy for Multi-Component System <i>Manish RAWAT, Bhupesh Kumar LAD</i>	1437
Deriving an Empirical Model for Machinery Prioritization: Mechanical Systems Maintenance <i>R.M. Chandima RATNAYAKE, Dorota STADNICKA, Katarzyna ANTOSZ</i>	1442
The Bivariate Generalized Variance S Control Chart with Runs Rules <i>Chee Jiun CHONG, Ming Ha LEE</i>	1448
Dynamic k-out-of-n System with Component Partnership Design with Two Dependent Competing Failure Processes <i>Nida CHATWATTANASIRI, David COIT, Naruemon WATTANAPONGSAKORN, Qianmei FENG</i>	1453

RM 4 Reliability & Maintenance Engineering (4)

In-Service Inspection of Offshore Concrete Structures: Application of an Expert System <i>Samindi SAMARAKOON, R.M. Chandima RATNAYAKE</i>	1458
--	------

Double Intelligence Contests vs. Impact Contest in Defending Genuine Object with Imperfect False Targets <i>Mengya WAN, Xiuyi CHEN, Jun YANG, Rui PENG, Yu ZHAO</i>	1463
Plant Systems and Equipment Maintenance: Use of Fuzzy Logic for Criticality Assessment in NORSOK Standard Z-008 <i>R.M. Chandima RATNAYAKE</i>	1468
Time-variant Reliability Analysis of Mechatronic Product Based on PSO and Up-crossing Rate Approach <i>Bo LIU, Jianguo ZHANG, Pidong WANG, Zhiyi MA</i>	1473
World Class Maintenance (WCM): Measurable Indicators Creating Opportunities for the Norwegian Oil and Gas Industry <i>Syeda Fahmida IMAM, Jawad RAZA, R.M. Chandima RATNAYAKE</i>	1479
Design an Effective Reliability Demonstration Test Plan using Six Sigma Approach <i>Mohamad Razif MOHD IDRIS, Azmir ALADIN</i>	1484

TK 3 Technology & Knowledge Management (3)

Impact of Organizational Characteristics on the Relationship of Management Practice Factors, Efficient Technology Transfer and Firm's Business Performance <i>Nguyen Thi Duc NGUYEN, Atsushi AOYAMA</i>	1489
Technical and Non-Technical Innovation Models in China's SMEs: A Case Study <i>Jin CHEN, Juxiang ZHOU, Feng XU, Yue YIN</i>	1495
The Impact of Scientific Knowledge Resources on Innovation Performance: A Case Study <i>Juxiang ZHOU, Jin CHEN, Xiaoting ZHAO, Xiangzhen YU, Yue YIN</i>	1500
Developing Proprietary or Open Source Technology: Learning from Five Case Studies <i>R R K SHARMA, Ajay JHA, Sandeep RAJPUT</i>	1505
Overtime Reduction, Work-Life Balance, and Psychological Well-Being for Research and Development Engineers in Japan <i>Tetsushi FUJIMOTO, Sayaka SHINOHARA, Hideki SHIMIZU-TANAKA, Yoshifumi NAKATA</i>	1510
Integration of Design for X Approaches in the Concept of Lean Design to Enable a Holistic Product Design <i>Uwe DOMBROWSKI, Stefan SCHMIDT</i>	1515

SR 2 Safety, Security & Risk Management (2)

Clarifying the Value Elements of Business Models for Disturbance Management in Supply Chains <i>Lea HANNOLA, Nina TERVONEN, Ville OJANEN, Tuomo KÄSSI</i>	1520
Customer Needs for Analyzing and Managing Disturbances in Transport Logistics <i>Nina TERVONEN, Lea HANNOLA, Ville OJANEN</i>	1525
Risk Management of Construction Projects Based on Sandpile Model: a Frame of Risk Conduction <i>Bingbing XU, Y. Q. CHEN, C. M. WANG</i>	1530
Implications of Radioactive Contamination near Production Sites for Product Quality-related Risk Perceptions and Customer Loyalty <i>Bjoern FRANK, Dinush WIMALACHANDRA</i>	1535

Research on Safety Management of Freeway Traffic 1540
Bing LI

IS Intelligent Systems

Difference Priority Algorithm in Semiconductor Scheduling Problems 1545
Kun-Ming YU, Ming-Gong LEE, Chang-Hsing LEE, Yon-Yaw CHEN

Fault Classification on High Voltage Power Lines Using Principal Component Analysis and Feed-Forward Artificial Neural Networks 1550
Poobalan GOVENDER, Neelendren PILLAY, Kevin Emanuel MOORGAS

Application of Estimation of Distribution Algorithms for Solving Order Acceptance with Weighted Tardiness Problems 1555
Watcharee WATTANAPORNPROM, Tieke LI, Warin WATTANAPORNPROM, Prabhas CHONGSTITVATANA

A Risk Assessment Model Using Artificial Neural Networks Case Study: National Iranian Oil Products Distribution Company (NIOPDC) 1560
Ahmad VEDADI, Maryam KHAJEH, Faezeh MONTAZERI

Dynamic Parallel Machine Scheduling Using the Learning Agent 1565
Biao YUAN, Lei WANG, Zhibin JIANG

In-Service Inspection of Static Mechanical Equipment: Use of a Fuzzy Inference System for Maintaining the Quality of an Inspection Program 1570
A.M.N.D.B. SENEVIRATNE, R.M. Chandima RATNAYAKE


MS Manufacturing Systems

Design of Integrated Scheduling and Automated Controlling for Surface Treatment Process using Supervisory Control and Data Acquisition (SCADA) 1577
Dida DAMAYANTI, Haris RACHMAT, Denny SUKMA ATMAJA

Common Production Process Modeling for MES Based on Multi-Agent 1582
Shikai LUO, Guiming LUO, Xibin ZHAO

Genetic Algorithm Approach for Solving Intercellular Layout Problems in Cellular Manufacturing Systems 1587
Prafulla KULKARNI, Kripa SHANKER

Lean Implementation in Small and Medium Enterprises – A Singapore Context 1592
Laura Xiao Xia XU, Feng Yu WANG, Roland LIM, MH TOH, Ram VALLIAPPAN

 An Improved Binary Linear Programming Approach for Life Cycle Assessment System Boundary Identification 1597
Feri AFRINALDI, Hong-Chao ZHANG, John CARRELL

Measurement of Manufacturing Effectiveness of a Company Using Analytical Hierarchical Process: A Case Study 1602
Ramesh LEKURWALE, Milind AKARTE, D.N. RAUT

Poster Session 2

A Conceptual Framework of an Integrated Fuzzy ANP and TOPSIS for Supplier Selection Based on Supply Chain Risk Management 1607
Sittichok SINRAT, Walailak ATTHIRAWONG

An Analytic Network Process Model to Support Decision Making in a Pharmaceutical Supply Chain <i>Virginia MACHADO, Ana Paula BARROSO, Virgilio CRUZ-MACHADO</i>	1612
Economic, Environmental and Social Responsible Supply Chain design Using Differential Evolution Multi Objective Algorithm <i>Shadan TAYYAR, Daniel ROY, Farid GHADERI</i>	1617
Diversification of Supply Chain <i>James K. C. CHEN, Tran NGUYEN, Kaisa CHEN, Ha NGUYEN</i>	1622
Reverse Logistics: A Business Opportunity in Time of Crisis <i>Manuel MONTERREY, David DE LA FUENTE, Isabel FERNANDEZ, Jose PARRENO, Rafael ROSILLO</i>	1627
A Practical Supply Chain Risk Management Approach using VaR <i>Jasmine Jiamin LIM, Allan Nengsheng ZHANG, Puay Siew TAN</i>	1631
Optimal Design of Sewer Network by Tabu Search and Simulated Annealing <i>Shuang-Fu YEH, Yao-Jen CHANG, Min-Der LIN</i>	1636
An Improved Variable Neighborhood Search for the Open Vehicle Routing Problem with Time Windows <i>Anak Agung Ngurah Perwira REDI, Meilinda Fitriani Nur MAGHFIROH, Vincent F. YU</i>	1641
The Impact of Managers Selection Criteria on Quality of Capabilities: Are Managers only for Representative Function? <i>Mait RUNGI</i>	1646
Friction Between Foot and Floor Under Barefoot Conditions: a Pilot Study <i>Kai-Way LI, Hsiao-Ching WEN</i>	1651
A Discussion of Multiple Learning Effects and Unconscious Behavior in the Software Debugging Process with Variable Potential Errors and Change-points <i>Kuei-Chen CHIU, Shulan HSIEH</i>	1656
Determinants of Adopting Mobile Internet TV in Bangkok <i>Sothaya RASMIDATTA, Saphachet PHERMPHOONWATANASUK, Nopporn SRIVORAVILAI</i>	1661
Work Value and Motivation Mediate the Influence of Personality on Contextual Performance <i>Zhijing WANG, Ji-Wei MA, Yi Wen CHEN</i>	1666
The Associations between Emotional Intelligence and Academic Achievement: Mediator or Moderator effect of Learning Adaptability <i>Xue Fei ZHOU, Yi Wen CHEN, Hui XIE, Hong XIE</i>	1671
Lower Bounds for Estimating Workforce Size in a 24/7 Company <i>Jesús LOZANO, Alberto GÓMEZ, Raul PINO, Javier PUENTE, Borja PONTE</i>	1675
The Effect of Sound on Job Performance <i>Veronika SISKOVA, Martin JURICKA</i>	1679
Evaluation of a Collision Avoidance Display to Support Pilots' Mental Workload in a Free Flight Environment <i>Yakubu IBRAHIM, Peter HIGGINS, Peter BRUCE</i>	1684
Selection of Sub-contractors of the Project While Minimizing Settlements of Contractual Penalties and Success Fees <i>Tomasz BŁASZCZYK, Pawel BŁASZCZYK</i>	1689
Which Dynamic Capabilities Needed for Successful Promote of ERP Activity? <i>Te-King CHIEN, Jih-Cian SYUE</i>	1694

An Extended Risk Matrix Approach for Supply Chain Risk Assessment <i>Zheng Ping LI, Gabriel YEE, Puay Siew TAN, Siang Guan LEE</i>	1699
A Comparison Between the Sprinklers Nozzles Dimensioning Imposed by the European and the American Fire Safety Norms – Case Study: A Warehouse Containing Plastic <i>Marcello FERA, Raffaele IANNONE, Alfredo LAMBIASE, Roberto MACCHIAROLI, Salvatore MIRANDA</i>	1705
An Application of Learning Effects for Assessing Work Performance Using a Software Reliability Growth Model with Multiple Change-points <i>Kuei-Chen CHIU, Shulan HSIEH</i>	1711
A Framework for the Choice of the Opportunistic Maintenance Policy in Industrial Contexts <i>Mariagrazia DI DIO, Raffaele IANNONE, Salvatore MIRANDA, Stefano RIEMMA</i>	1716
The “Soft” Obstacles to Quality Excellence Practices: Evidence from the United Arab Emirates Industries <i>Mehran DOULATABADI, Sha'ri MOHD YUSOF, Farhad NEJADI</i>	1721
Author Index	1726



All Search within Publication

ADVANCED SEARCH

Quick Links

- Search for Upcoming Conferences
Browse Conferences
IEEE International Conference ... > 2013 IEEE International Confer...
IEEE Publication Recommender
IEEE Author Center

IEEE International Conference on Industrial Engineering and Engineering Management

Industrial Engineering and Engineering Management (IEEM), 2013 IEEE International Conference on
Print on Demand Purchase at Partner
Copy Persistent Link Browse Title List Sign up for Conference Alerts
External Hard-drive Purchase at Partner

Proceedings All Proceedings Popular

2013 IEEE International Conference on Industrial Engineering and Engineering Management DOI: 10.1109/IEEM30508.2013

Search within results Per Page: 5 Per Page 25 | Export | Email Selected Results

Showing 301-325 of 347

Filter sort: Sort Sequence | Email

Refine

- Author
Affiliation
Conference Location

- Technical and non-technical innovation models in China's SMEs: A case study
Jin Chen; Juxiang Zhou; Feng Xu; Yue Yin
Publication Year: 2013 , Page(s): 1495 - 1499
Abstract (1403 Kb)
Technical and non-technical innovation models in China's SMEs: A case study
Jin Chen; Juxiang Zhou; Feng Xu; Yue Yin
2013 IEEE International Conference on Industrial Engineering and Engineering Management
Year: 2013

- The impact of scientific knowledge resources on innovation performance: A case study
Juxiang Zhou; Jin Chen; Xiaoting Zhao; Xiangzhen Yu; Yue Yin
Publication Year: 2013 , Page(s): 1500 - 1504
Abstract (1389 Kb)
The impact of scientific knowledge resources on innovation performance: A case study
Juxiang Zhou; Jin Chen; Xiaoting Zhao; Xiangzhen Yu; Yue Yin
2013 IEEE International Conference on Industrial Engineering and Engineering Management
Year: 2013

Quick Links

- Search for Upcoming Conferences
IEEE Publication Recommender
IEEE Author Center

Proceedings

The proceedings of this conference will be available for purchase through Curran Associates.

Industrial Engineering and Engineering Management (IEEM), 2013 IEEE International Conference on

IEEE websites place cookies on your device to enhance navigation, improve site usage, and assist in our marketing efforts. By using our websites, you agree to the placement of these cookies. To learn more, read our Privacy Policy.

Accept & Close

Print on

Demand **Purchase at Partner**External Hard-drive **Purchase at Partner**

Publication Year: 2013 , Page(s): 1505 - 1509

Abstract (1366 Kb)

- Developing proprietary or open source technology: Learning from five case studies**

R. R. K. Sharma; Ajay Jha; Sandeep S Rajput
2013 IEEE International Conference on Industrial Engineering and Engineering Management
Year: 2013

- Overtime reduction, work-life balance, and psychological well-being for research and development engineers in Japan**

Tetsushi Fujimoto; Sayaka Shinohara; Hideki S. Tanaka; Yoshifumi Nakata

Publication Year: 2013 , Page(s): 1510 - 1514

Cited by: Papers (1)

Abstract (1446 Kb)

- Overtime reduction, work-life balance, and psychological well-being for research and development engineers in Japan**

Tetsushi Fujimoto; Sayaka Shinohara; Hideki S. Tanaka; Yoshifumi Nakata

2013 IEEE International Conference on Industrial Engineering and Engineering Management

Year: 2013

- Integration of design for X approaches in the concept of lean design to enable a holistic product design**

U. Dombrowski; S. Schmidt

Publication Year: 2013 , Page(s): 1515 - 1519

Cited by: Papers (7)

Abstract (1386 Kb)

- Integration of design for X approaches in the concept of lean design to enable a holistic product design**

U. Dombrowski; S. Schmidt

2013 IEEE International Conference on Industrial Engineering and Engineering Management

Year: 2013

- Clarifying the value elements of business models for disturbance management in supply chains**

L. Hannola; N. Tervonen; V. Ojanen; T. Kässi

Publication Year: 2013 , Page(s): 1520 - 1524

Abstract (1412 Kb)

- Clarifying the value elements of business models for disturbance management in supply chains**

L. Hannola; N. Tervonen; V. Ojanen; T. Kässi

2013 IEEE International Conference on Industrial Engineering and Engineering Management

Year: 2013

- Customer needs for analyzing and managing disturbances in transport logistics**

N. Tervonen; L. Hannola; V. Ojanen

Publication Year: 2013 , Page(s): 1525 - 1529

Abstract (1312 Kb)

- Customer needs for analyzing and managing disturbances in transport logistics**

N. Tervonen; L. Hannola; V. Ojanen

2013 IEEE International Conference on Industrial Engineering and Engineering Management

Year: 2013

IEEE websites place cookies on your device to enhance site navigation, analyze site usage, and assist in our marketing efforts. (See our Privacy Policy for more information.)
 you agree to the placement of these cookies. To learn more, read our [Privacy Policy](#).

Accept & Close

- Risk management of construction projects based on sandpile model: A frame of risk conduction**
B. B. Xu; Y. Q. Chen; C. M. Wang
Publication Year: 2013 , Page(s): 1530 - 1534
- Abstract (1559 Kb)
- Risk management of construction projects based on sandpile model: A frame of risk conduction**
B. B. Xu; Y. Q. Chen; C. M. Wang
2013 IEEE International Conference on Industrial Engineering and Engineering Management
Year: 2013
-
- Implications of radioactive contamination near production sites for product quality-related risk perceptions and customer loyalty**
B. Frank; D. C. Wimalachandra
Publication Year: 2013 , Page(s): 1535 - 1539
- Abstract (1445 Kb)
- Implications of radioactive contamination near production sites for product quality-related risk perceptions and customer loyalty**
B. Frank; D. C. Wimalachandra
2013 IEEE International Conference on Industrial Engineering and Engineering Management
Year: 2013
-
- Research on safety management of freeway traffic**
Bing Li
Publication Year: 2013 , Page(s): 1540 - 1544
- Abstract (1560 Kb)
- Research on safety management of freeway traffic**
Bing Li
2013 IEEE International Conference on Industrial Engineering and Engineering Management
Year: 2013
-
- Difference priority algorithm in semiconductor scheduling problems**
K. M. Yu; M. G. Lee; C. H. Lee; Y. Y. Chen
Publication Year: 2013 , Page(s): 1545 - 1549
- Abstract (1497 Kb)
- Difference priority algorithm in semiconductor scheduling problems**
K. M. Yu; M. G. Lee; C. H. Lee; Y. Y. Chen
2013 IEEE International Conference on Industrial Engineering and Engineering Management
Year: 2013
-
- Fault classification on high voltage power lines using principal component analysis and feed-forward artificial neural networks**
Poobalan Govender; Neelendren Pillay; Kevin Emanuel Moorgas
Publication Year: 2013 , Page(s): 1550 - 1554
Cited by: Papers (2)
- Abstract (2102 Kb)
- Fault classification on high voltage power lines using principal component analysis and feed-forward artificial neural networks**
Poobalan Govender; Neelendren Pillay; Kevin Emanuel Moorgas
2013 IEEE International Conference on Industrial Engineering and Engineering Management
Year: 2013

- Application of estimation of distribution algorithms for solving order acceptance with weighted tardiness problems**
Watcharee Wattanapornprom; Tieke Li; Warin Wattanapornprom; Prabhas Chongstitvatana
Publication Year: 2013 , Page(s): 1555 - 1559
- Abstract (1583 Kb)
- Application of estimation of distribution algorithms for solving order acceptance with weighted tardiness problems**
Watcharee Wattanapornprom; Tieke Li; Warin Wattanapornprom; Prabhas Chongstitvatana
2013 IEEE International Conference on Industrial Engineering and Engineering Management
Year: 2013
-
- A risk assessment model using artificial neural networks case study: National Iranian oil products distribution company (NIOPDC)**
Ahmad Vedadi; Maryam Khajeh; Faezeh Montazeri
Publication Year: 2013 , Page(s): 1560 - 1564
- Abstract (1401 Kb)
- A risk assessment model using artificial neural networks case study: National Iranian oil products distribution company (NIOPDC)**
Ahmad Vedadi; Maryam Khajeh; Faezeh Montazeri
2013 IEEE International Conference on Industrial Engineering and Engineering Management
Year: 2013
-
- Dynamic parallel machine scheduling using the learning agent**
Biao Yuan; Lei Wang; Zhibin Jiang
Publication Year: 2013 , Page(s): 1565 - 1569
- Abstract (1475 Kb)
- Dynamic parallel machine scheduling using the learning agent**
Biao Yuan; Lei Wang; Zhibin Jiang
2013 IEEE International Conference on Industrial Engineering and Engineering Management
Year: 2013
-
- In-service inspection of static mechanical equipment: Use of a fuzzy inference system for maintaining the quality of an inspection program**
A. M. N. D. B. Seneviratne; R. M. Chandima Ratnayake
Publication Year: 2013 , Page(s): 1570 - 1576
Cited by: Papers (6)
- Abstract (1490 Kb)
- In-service inspection of static mechanical equipment: Use of a fuzzy inference system for maintaining the quality of an inspection program**
A. M. N. D. B. Seneviratne; R. M. Chandima Ratnayake
2013 IEEE International Conference on Industrial Engineering and Engineering Management
Year: 2013
-
- Design of integrated scheduling and automated controlling for surface treatment process using Supervisory Control and Data Acquisition (SCADA)**
D. D. Damayanti; H. Rachmat; D. S. Atmaja
Publication Year: 2013 , Page(s): 1577 - 1581

controlling for surface treatment process using Supervisory Control and Data Acquisition (SCADA)

D. D. Damayanti; H. Rachmat; D. S. Atmaja
2013 IEEE International Conference on Industrial Engineering and Engineering Management
Year: 2013

- Common production process modeling for MES based on multi-agent**

Shikai Luo; Guiming Luo; Xibin Zhao
Publication Year: 2013 , Page(s): 1582 - 1586
Cited by: Papers (1)

Abstract (2004 Kb)

- Common production process modeling for MES based on multi-agent**

Shikai Luo; Guiming Luo; Xibin Zhao
2013 IEEE International Conference on Industrial Engineering and Engineering Management
Year: 2013

- Genetic algorithm approach for solving intercellular layout problems in cellular manufacturing systems**

P. C. Kulkarni; Kripa Shanker
Publication Year: 2013 , Page(s): 1587 - 1591

Abstract (1404 Kb)

- Genetic algorithm approach for solving intercellular layout problems in cellular manufacturing systems**

P. C. Kulkarni; Kripa Shanker
2013 IEEE International Conference on Industrial Engineering and Engineering Management
Year: 2013

- Lean implementation in small and medium enterprises — A Singapore context**

Laura Xiao Xia Xu; F Y Wang; Roland Lim; M H Toh; Ram Valliappan
Publication Year: 2013 , Page(s): 1592 - 1596

Abstract (1772 Kb)

- Lean implementation in small and medium enterprises — A Singapore context**

Laura Xiao Xia Xu; F Y Wang; Roland Lim; M H Toh; Ram Valliappan
2013 IEEE International Conference on Industrial Engineering and Engineering Management
Year: 2013



- An improved binary linear programming approach for life cycle assessment system boundary identification**

Feri Afrinaldi; Hong-Chao Zhang; John Carrell
Publication Year: 2013 , Page(s): 1597 - 1601

Abstract (1464 Kb)

- An improved binary linear programming approach for life cycle assessment system boundary identification**

Feri Afrinaldi; Hong-Chao Zhang; John Carrell
2013 IEEE International Conference on Industrial Engineering and Engineering Management
Year: 2013

- Measurement of manufacturing effectiveness of a company**

R. R. Lekurwale; M. M. Akarte; D. N. Raut
Publication Year: 2013 , Page(s): 1602 - 1606
Cited by: Papers (1)

IEEE websites place cookies on your device to give you the best user experience. By using our websites, you agree to the placement of these cookies. To learn more, read our Privacy Policy.

Accept & Close

Abstract (1425 Kb)

Measurement of manufacturing effectiveness of a company using analytical hierarchical process: A case study

R. R. Lekurwale; M. M. Akarte; D. N. Raut

2013 IEEE International Conference on Industrial Engineering and Engineering Management

Year: 2013

A conceptual framework of an integrated fuzzy ANP and TOPSIS for supplier selection based on supply chain risk management

Sittichok Sinrat; Walailak Atthirawong

Publication Year: 2013 , Page(s): 1607 - 1611

Abstract (1558 Kb)

A conceptual framework of an integrated fuzzy ANP and TOPSIS for supplier selection based on supply chain risk management

Sittichok Sinrat; Walailak Atthirawong

2013 IEEE International Conference on Industrial Engineering and Engineering Management

Year: 2013

An Analytic Network Process model to support decision making in a pharmaceutical supply chain

V. H. Machado; A. P. Barroso; V. Cruz Machado

Publication Year: 2013 , Page(s): 1612 - 1616

Cited by: Papers (1)

Abstract (1471 Kb)

An Analytic Network Process model to support decision making in a pharmaceutical supply chain

V. H. Machado; A. P. Barroso; V. Cruz Machado

2013 IEEE International Conference on Industrial Engineering and Engineering Management

Year: 2013

Economic, environmental and social responsible supply chain design using differential evolution multi objective algorithm

Sh. Gholizadeh Tayyar; D. Roy; S. F. Ghaderi

Publication Year: 2013 , Page(s): 1617 - 1621

Cited by: Papers (1)

Abstract (1725 Kb)

Economic, environmental and social responsible supply chain design using differential evolution multi objective algorithm

Sh. Gholizadeh Tayyar; D. Roy; S. F. Ghaderi

2013 IEEE International Conference on Industrial Engineering and Engineering Management

Year: 2013

Load More

Previous < 11 12 13 14 >

[About IEEE Xplore](#) | [Contact Us](#) | [Help](#) | [Accessibility](#) | [Terms of Use](#) | [Nondiscrimination Policy](#) | [Sitemap](#) | [Privacy & Opting Out of Cookies](#)
A not-for-profit organization, IEEE is the world's largest technical professional organization dedicated to advancing technology for the benefit of humanity.

© Copyright 2021 IEEE - All rights reserved. Use of this web site signifies your agreement to the terms and conditions.

IEEE Account

- » [Change Username/Password](#)
- » [Update Address](#)

Purchase Details

- » [Payment Options](#)
- » [Order History](#)
- » [View Purchased Documents](#)

Profile Information

- » [Communications Preferences](#)
- » [Profession and Education](#)
- » [Technical Interests](#)

Need Help?

- » **US & Canada:** +1 800 678 4333
- » **Worldwide:** +1 732 981 0060
- » [Contact & Support](#)

[About IEEE Xplore](#) | [Contact Us](#) | [Help](#) | [Accessibility](#) | [Terms of Use](#) | [Nondiscrimination Policy](#) | [Sitemap](#) | [Privacy & Opting Out of Cookies](#)

A not-for-profit organization, IEEE is the world's largest technical professional organization dedicated to advancing technology for the benefit of humanity.

© Copyright 2021 IEEE - All rights reserved. Use of this web site signifies your agreement to the terms and conditions.

IEEE websites place cookies on your device to give you the best user experience. By using our websites, you agree to the placement of these cookies. To learn more, read our [Privacy Policy](#).

Accept & Close



Document details

1 of 1

Export Download More... >

IEEE International Conference on Industrial Engineering and Engineering Management

18 November 2014, Article number 6962679, Pages 1597-1601

2013 IEEE International Conference on Industrial Engineering and Engineering Management, IEEM 2013; Bangkok; Thailand; 10 December 2013 through 13 December 2013; Category numberCFP13IEI-ART; Code 109355

An improved binary linear programming approach for life cycle assessment system boundary identification (Conference Paper)

Afrinaldi, F., Zhang, H.-C., Carrell, J.

View additional authors v

Save all to author list

^aDepartment of Industrial Engineering, Texas Tech University, Lubbock, TX, United States

^bDepartment of Industrial Engineering, Andalas University, Padang, Indonesia

View additional affiliations v

Abstract

According to ISO standards life cycle assessment (LCA) consists of goal definition and scoping, inventory analysis, life cycle impact assessment and interpretation. In goal definition and scoping LCA system boundary is defined. Since LCA is time consuming then there is a need for a systematic approach to determine which processes needed to be included in the system boundary. This paper fulfills the need by proposing an improved binary linear programming model for LCA system boundary identification. The objective function of the model is to minimize the number of processes included in the system boundary and its constraints are the specified mass, energy and economic value ratios. In order to demonstrate its applicability an example is presented. A sensitivity analysis is also conducted in order to illustrate how the change in the specified mass, energy and economic value ratio will affect current optimum system boundary. © 2013 IEEE.

SciVal Topic Prominence ⓘ

Topic: Global Warming Potential | Cogeneration Plants | Power Markets

Prominence percentile: 35.090 ⓘ

Author keywords

LCA linear programming system boundary

Indexed keywords

Engineering controlled terms: ISO Standards Linear programming Sensitivity analysis

Engineering uncontrolled terms: Binary linear programming Goal definitions Inventory analysis Life Cycle Assessment (LCA) Life cycle impact assessment Objective functions Standards life cycles System boundary

Cited by 0 documents

Inform me when this document is cited in Scopus:

Set citation alert >

Set citation feed >

Related documents

Find more related documents in Scopus based on:

Authors > Keywords >

ISSN: 21573611
ISBN: 978-147990986-5
Source Type: Conference Proceeding
Original language: English

DOI: 10.1109/IEEM.2013.6962679
Document Type: Conference Paper
Publisher: IEEE Computer Society

© Copyright 2020 Elsevier B.V., All rights reserved.

About Scopus

[What is Scopus](#)
[Content coverage](#)
[Scopus blog](#)
[Scopus API](#)
[Privacy matters](#)

Language

[日本語に切り替える](#)
[切换到简体中文](#)
[切换到繁體中文](#)
[Русский язык](#)

Customer Service

[Help](#)
[Contact us](#)

ELSEVIER

[Terms and conditions ↗](#) [Privacy policy ↗](#)

Copyright © Elsevier B.V. ↗. All rights reserved. Scopus® is a registered trademark of Elsevier B.V.

We use cookies to help provide and enhance our service and tailor content. By continuing, you agree to the use of cookies.

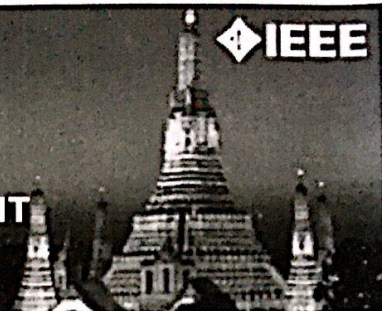
 RELX

IEEM 2013



THE IEEE INTERNATIONAL CONFERENCE ON
INDUSTRIAL ENGINEERING AND ENGINEERING MANAGEMENT

10 - 13 December 2013 Bangkok, Thailand | www.IEEM.org



Proof of Attendance

Prepared for

Feri Afrinaldi
Texas Tech University

**IEEM13-P-0176: An Improved Binary Linear Programming Approach for
Life Cycle Assessment System Boundary Identification**

Feri Afrinaldi¹, Hong-Chao Zhang², John Carrell²

¹Texas Tech University, United States, Andalas University, Indonesia

²Texas Tech University, United States



for Pakorn Adulbhan,

General Chair, Organizing Committee

December, 2013

An Improved

by Feri Afrinaldi

Submission date: 24-Feb-2021 12:34PM (UTC+0800)

Submission ID: 1516768983

File name: programming_approach_for_LCA_system_boundary_identification.pdf (1.09M)

Word count: 3869

Character count: 16891

An Improved Binary Linear Programming Approach for Life Cycle Assessment System Boundary Identification

Afrinaldi^{1,2}, Hong-Chao Zhang¹, John Carrell¹

¹Department of Industrial Engineering, Texas Tech University, Lubbock, Texas, USA

²Department of Industrial Engineering, Andalas University, Padang, Indonesia
(feri.afinaldi@ttu.edu, hong-chao.zhang@ttu.edu, john.carrell@ttu.edu)

Abstract - According to ISO standards life cycle assessment (LCA) consists of goal definition and scoping, inventory analysis, life cycle impact assessment and interpretation. In goal definition and scoping LCA system boundary is defined. Since LCA is time consuming then there is a need for a systematic approach to determine which processes needed to be included in the system boundary. This paper fulfills the need by proposing an improved binary linear programming model for LCA system boundary identification. The objective function of the model is to minimize the number of processes included in the system boundary and its constraints are the specified mass, energy and economic value ratios. In order to demonstrate its applicability an example is presented. A sensitivity analysis is also conducted in order to illustrate how the change in the specified mass, energy and economic value ratio will affect current optimum system boundary.

Keywords - LCA, linear programming, system boundary

I. INTRODUCTION

As environmental awareness of the society increases, industries find that it is beneficial to produce environmental friendly products. In order to achieve this, the first step to do is to measure product's environmental impacts. One of the tools that are used is life cycle assessment (LCA) which assesses environmental impacts of product from material extraction to end-of-life treatment. LCA consists of four phases: (1) goal definition and scoping, (2) inventory analysis, (3) life cycle impact assessment (LCIA) and (4) interpretation [1]. Furthermore, according to SAIC [2], in goal and scoping, system boundary of the LCA study is defined.

Man et al. [3] classified LCA system boundary into boundaries between the technological system and nature, geographical area, time horizon, capital goods and boundaries between the life cycle of the studied product and related life cycles. Other authors such as Guinée et al., as cited in [4], distinguished LCA system boundaries into boundaries between technical systems and the environment, between technological systems and other technological systems, and boundaries between significant and insignificant processes.

This paper focuses on boundaries between significant and insignificant processes. Since LCA is a time consuming process, in practice, there is a need for a systematic method to define which processes needed to be included or excluded in the LCA system boundary.

II. EXISTING APPROACHES FOR LCA SYSTEM BOUNDARY IDENTIFICATION

In ISO standards, the system boundary is defined through the following procedures [5]: (1) define an initial system boundary, (2) conduct sensitivity analysis and (3) improve the system boundary by adding new unit processes shown to be significant by sensitivity analysis. According to Suh et al. [5] and Reynold et al. [6], this approach has practical difficulties because environmental impacts need to be quantified before system boundary is defined.

By considering the weakness of the guideline provided by the ISO standards, Reynolds et al. [6] proposed a method known as Relative Mass-Energy-Economic (RMEE) to help practitioners defining LCA system boundary. The RMEE compares mass, energy and economic value ratios of a unit process to a parameter known as boundary cut-off ratio. However, in RMEE, the procedure needs to be done all over again if the boundary cut-off ratio changes [7].

Other methods in defining LCA system boundary can be found in Suh et al. [5] and Suh and Huppes [8]. Three methods are discussed by the authors, process analysis approach, economic input/output (I/O) approach and hybrid approach. Furthermore, the hybrid approach is distinguished into tiered hybrid, I/O based hybrid and I/O based hybrid [8].

The advantage of the process analysis approach is that it is limited to the processes included to the chosen system boundary therefore subjectivity is involved [5]. For the I/O LCA, since monetary value is used then price variability may distort physical flows within industrial sectors [5]. For the hybrid approach, according to [5], tiered hybrid approach has problem with double counting and integrated hybrid approach is time consuming. Furthermore, significant error may occur when significant processes are modeled by using the aggregated data available in I/O based hybrid approach [8].

The application of the optimization approach in defining the LCA system boundary can be found in Afrinaldi et al. [7]. The authors employed a binary linear programming model. Since the approach is an optimization technique then sensitivity analysis is easy to be done. However, this approach possesses several problems. The authors present two objective functions that can be selected by the analysts, (1) total number of processes minimization and (2) mass, energy and economic value ratios maximization, and one of the

constraints is the budget constraint. It does not seem appropriate to include budget constraints in LCA because if particular processes have significant environmental impacts then they have to be included in the LCA study although much cost is needed to assess their impacts. Moreover, it is not necessary to maximize mass, energy and economic value ratios because those ratios are predetermined.

III. PROPOSED METHODOLOGY

This methodology improves the binary linear programming approach presented in Afrinaldi et al. [7]. Here, budget constraints are omitted. Specified mass, energy and economic value ratios are treated as the constraints. Consequently, only the total number of processes minimization is treated as the objective function. The use of mass, energy and economic value ratios in this paper and in Afrinaldi et al. [7] was based on Reynolds et al. [6]. Let us consider that $i = \{1, 2, 3\}$ represents life cycle stage of a product where 1 is material production, 2 is manufacturing and 3 is end-of-life treatment. The decision variables are defined as the following.

$x_j^{(i)}$ = The j^{th} process of life cycle stage i .

$x_{jk}^{(i)}$ = The k^{th} process of process j .

$x_{jkl}^{(i)}$ = The l^{th} process of process jk .

The value of the decision variables is binary as given by (1). An example of decision variable structure is presented in Fig. 1.

$$x_j^{(i)} = x_{jk}^{(i)} = x_{jkl}^{(i)} = \begin{cases} 1, & \text{if inside the boundary} \\ 0, & \text{if outside the boundary} \end{cases} \quad (1)$$

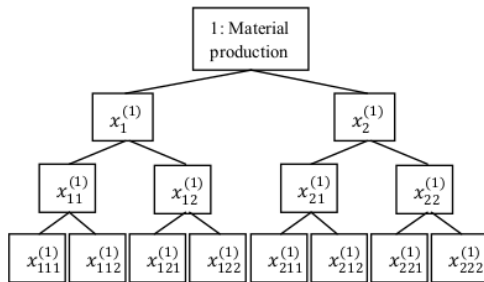


Fig. 1. An example of decision variable structure

As shown in decision variable definition and in Fig. 1, only processes with up to three subscripts are considered. This is done for simplification purpose. Furthermore, let us define the following.

α = Specified ratio of total mass flowing inside system boundary to total mass flowing inside product life cycle.

β = Specified ratio of total energy flowing inside system boundary to total energy flowing inside product life cycle.

γ = Specified ratio of total economic value of processes inside system boundary to total economic value of processes inside product life cycle.

$m_j^{(i)}$ = mass flowing in the j^{th} process of life cycle stage i .

$m_{jk}^{(i)}$ = mass flowing in the k^{th} process of process j .

$m_{jkl}^{(i)}$ = mass flowing in the l^{th} process of process jk .

$e_j^{(i)}$ = energy flowing in the j^{th} process of life cycle stage i .

$e_{jk}^{(i)}$ = energy flowing in the k^{th} process of process j .

$e_{jkl}^{(i)}$ = energy flowing in the l^{th} process of process jk .

$v_j^{(i)}$ = economic value of the j^{th} process of life cycle stage i .

$v_{jk}^{(i)}$ = economic value of the k^{th} process of process j .

$v_{jkl}^{(i)}$ = economic value of the l^{th} process of process jk .

The specified minimum mass, energy and economic value ratios are given by (2), (3) and (4).

$$\left(\frac{\sum_{i=1}^3 \sum_{j=1}^J m_j^{(i)} x_j^{(i)} + \sum_{i=1}^3 \sum_{j=1}^J \sum_{k=1}^K m_{jk}^{(i)} x_{jk}^{(i)}}{\sum_{i=1}^3 \sum_{j=1}^J \sum_{k=1}^K \sum_{l=1}^L m_{jkl}^{(i)} x_{jkl}^{(i)}} \right) \geq \alpha \quad (2)$$

$$\left(\frac{\sum_{i=1}^3 \sum_{j=1}^J m_j^{(i)} + \sum_{i=1}^3 \sum_{j=1}^J \sum_{k=1}^K m_{jk}^{(i)}}{\sum_{i=1}^3 \sum_{j=1}^J \sum_{k=1}^K \sum_{l=1}^L m_{jkl}^{(i)}} \right) \left(\frac{\sum_{i=1}^3 \sum_{j=1}^J e_j^{(i)} x_j^{(i)} + \sum_{i=1}^3 \sum_{j=1}^J \sum_{k=1}^K e_{jk}^{(i)} x_{jk}^{(i)}}{\sum_{i=1}^3 \sum_{j=1}^J \sum_{k=1}^K \sum_{l=1}^L e_{jkl}^{(i)} x_{jkl}^{(i)}} \right) \geq \beta \quad (3)$$

$$\left(\frac{\sum_{i=1}^3 \sum_{j=1}^J v_j^{(i)} x_j^{(i)} + \sum_{i=1}^3 \sum_{j=1}^J \sum_{k=1}^K v_{jk}^{(i)} x_{jk}^{(i)}}{\sum_{i=1}^3 \sum_{j=1}^J \sum_{k=1}^K \sum_{l=1}^L v_{jkl}^{(i)} x_{jkl}^{(i)}} \right) \geq \gamma \quad (4)$$

$$\left(\frac{\sum_{i=1}^3 \sum_{j=1}^J v_j^{(i)} + \sum_{i=1}^3 \sum_{j=1}^J \sum_{k=1}^K v_{jk}^{(i)}}{\sum_{i=1}^3 \sum_{j=1}^J \sum_{k=1}^K \sum_{l=1}^L v_{jkl}^{(i)}} \right)$$

The binary linear programming model is given by the following.

$$\text{Min} \sum_{i=1}^3 \sum_{j=1}^J x_j^{(i)} + \sum_{i=1}^3 \sum_{j=1}^J \sum_{k=1}^K x_{jk}^{(i)} + \sum_{i=1}^3 \sum_{j=1}^J \sum_{k=1}^K \sum_{l=1}^L x_{jkl}^{(i)} \quad (5)$$

subject to

$$\sum_{j=1}^J x_j^{(i)} \leq M \quad \text{for } i = 1, 2, 3. \quad (6)$$

$$\sum_{j=1}^J \sum_{k=1}^K x_{jk}^{(i)} \leq Mx_{j'}^{(i)} \quad \text{for } i = 1, 2, 3; \quad (7)$$

$$\sum_{j=1}^J \sum_{k=1}^K \sum_{l=1}^L x_{jkl}^{(i)} \geq Mx_{j'k'}^{(i)} \quad \text{for } i = 1, 2, 3; \quad (8)$$

for any combination of j' and k' ;
 $j' = 1, 2, \dots, J$ and
 $k' = 1, 2, \dots, K$.

$$\left(\begin{array}{l} \sum_{i=1}^3 \sum_{j=1}^J m_j^{(i)} (\alpha - x_j^{(i)}) + \sum_{i=1}^3 \sum_{j=1}^J \sum_{k=1}^K m_{jk}^{(i)} (\alpha - x_{jk}^{(i)}) \\ \sum_{i=1}^3 \sum_{j=1}^J \sum_{k=1}^K \sum_{l=1}^L m_{jkl}^{(i)} (\alpha - x_{jkl}^{(i)}) \end{array} \right) \leq 0 \quad (9)$$

$$\left(\begin{array}{l} \sum_{i=1}^3 \sum_{j=1}^J e_j^{(i)} (\beta - x_j^{(i)}) + \sum_{i=1}^3 \sum_{j=1}^J \sum_{k=1}^K e_{jk}^{(i)} (\beta - x_{jk}^{(i)}) \\ \sum_{i=1}^3 \sum_{j=1}^J \sum_{k=1}^K \sum_{l=1}^L e_{jkl}^{(i)} (\beta - x_{jkl}^{(i)}) \end{array} \right) \leq 0 \quad (10)$$

$$\left(\begin{array}{l} \sum_{i=1}^3 \sum_{j=1}^J v_j^{(i)} (\gamma - x_j^{(i)}) + \sum_{i=1}^3 \sum_{j=1}^J \sum_{k=1}^K v_{jk}^{(i)} (\gamma - x_{jk}^{(i)}) \\ \sum_{i=1}^3 \sum_{j=1}^J \sum_{k=1}^K \sum_{l=1}^L v_{jkl}^{(i)} (\gamma - x_{jkl}^{(i)}) \end{array} \right) \leq 0 \quad (11)$$

$$x_j^{(i)}, x_{jk}^{(i)}, x_{jkl}^{(i)}, x_{j'}^{(i)}, x_{j'k'}^{(i)} \in \{0, 1\} \quad (12)$$

Note that (2), (3) and (4) are not linear. They are linearized by applying simple algebra and the results are (9), (10) and (11). Inequalities (6), (7) and (8) are linking constraints implying that if a particular process is selected than its parent process has to be selected too. This is done by introducing a variable denoted as M where its value at least has to be equal to upper bound of any sum of variables in the problem.

IV. NUMERICAL EXAMPLE

Let's assume at an LCA study is conducted to assess a product. The life cycle of the product is divided into three stages, material production, manufacturing and end-of-life treatment. Table I presents all processes inside the product's life cycle, the amount of mass flowing inside each process, the amount of energy flowing inside each process and the economic value of each process. Note that all values in Table I are per functional unit of the product. In order to conduct the study it is specified that $\alpha = \beta = \gamma = 0.90$. The objective is to define the system

boundary of the study so that the specified requirements are met. Substituting the value of α, β, γ , mass, energy and economic values presented in Table I to the model, (5) to (12), yields the following binary linear programming model.

$$\text{Min} x_1^{(1)} + x_2^{(1)} + \dots + x_{222}^{(3)}$$

$$\text{subject } x_1^{(1)} + x_2^{(1)} \leq M$$

$$x_1^{(2)} + x_2^{(2)} \leq M$$

$$x_1^{(3)} + x_2^{(3)} \leq M$$

$$x_{11}^{(1)} + x_{12}^{(1)} \leq Mx_1^{(1)}$$

$$x_{21}^{(1)} + x_{22}^{(1)} \leq Mx_2^{(1)}$$

$$x_{11}^{(2)} + x_{12}^{(2)} \leq Mx_1^{(2)}$$

$$x_{21}^{(2)} + x_{22}^{(2)} \leq Mx_2^{(2)}$$

$$x_{11}^{(3)} + x_{12}^{(3)} \leq Mx_1^{(3)}$$

$$x_{21}^{(3)} + x_{22}^{(3)} \leq Mx_2^{(3)}$$

$$x_{111}^{(1)} + x_{112}^{(1)} \leq Mx_{11}^{(1)}$$

$$x_{121}^{(1)} + x_{122}^{(1)} \leq Mx_{12}^{(1)}$$

$$x_{211}^{(1)} + x_{212}^{(1)} \leq Mx_{21}^{(1)}$$

$$x_{221}^{(1)} + x_{222}^{(1)} \leq Mx_{22}^{(1)}$$

$$x_{111}^{(2)} + x_{112}^{(2)} \leq Mx_{11}^{(2)}$$

$$x_{121}^{(2)} + x_{122}^{(2)} \leq Mx_{12}^{(2)}$$

$$x_{211}^{(2)} + x_{212}^{(2)} \leq Mx_{21}^{(2)}$$

$$x_{221}^{(2)} + x_{222}^{(2)} \leq Mx_{22}^{(2)}$$

$$x_{111}^{(3)} + x_{112}^{(3)} \leq Mx_{11}^{(3)}$$

$$x_{121}^{(3)} + x_{122}^{(3)} \leq Mx_{12}^{(3)}$$

$$x_{211}^{(3)} + x_{212}^{(3)} \leq Mx_{21}^{(3)}$$

$$x_{221}^{(3)} + x_{222}^{(3)} \leq Mx_{22}^{(3)}$$

$$\left(\begin{array}{l} 18.62(0.9 - x_1^{(1)}) + 8.97(0.9 - x_2^{(1)}) + \dots + \\ 82.98(0.9 - x_{222}^{(3)}) \end{array} \right) \leq 0$$

$$\left(\begin{array}{l} 14.92(0.9 - x_1^{(1)}) + 82.16(0.9 - x_2^{(1)}) + \dots + \\ 98.18(0.9 - x_{222}^{(3)}) \end{array} \right) \leq 0$$

$$\left(\begin{array}{l} 12.76(0.9 - x_1^{(1)}) + 63.55(0.9 - x_2^{(1)}) + \dots + \\ 82.04(0.9 - x_{222}^{(3)}) \end{array} \right) \leq 0$$

$$x_1^{(1)}, x_2^{(1)}, \dots, x_{222}^{(3)} \in \{0, 1\}$$

In order to solve the above binary linear programming problem $M = 100$ is applied. The optimum solution is that all processes are inside the system boundary except processes denoted as $x_{11}^{(1)}, x_{112}^{(1)}, x_{212}^{(1)}, x_{221}^{(1)}, x_{122}^{(3)}$ and $x_{222}^{(3)}$ which are equal to zero. Optimum objective function value of this solution is equal to 35 meaning that there are 35 processes inside the system boundary. This solution produces mass ratio = 0.908, energy ratio = 0.901 and economic value ratio = 0.90.

TABLE I
DATA FOR THE NUMERICAL EXAMPLE

Life cycle	Process	Mass	Energy	Economic value	Process	Mass	Energy	Economic value	Process	Mass	Energy	Economic value
Material Production	$x^{(1)}_1$	18.62	14.92	12.76	$x^{(1)}_{11}$	1.16	57.35	5.56	$x^{(1)}_{111}$	4.71	2.77	1.26
					$x^{(1)}_{12}$	20.84	92.23	5.01	$x^{(1)}_{112}$	3.75	18.06	36.27
					$x^{(1)}_{121}$	55.51	80.11	66.71	$x^{(1)}_{122}$	34.36	27.51	68.13
	$x^{(1)}_2$	8.97	82.16	63.55	$x^{(1)}_{21}$	95.02	78.00	18.61	$x^{(1)}_{211}$	11.48	68.76	48.42
					$x^{(1)}_{212}$	34.42	6.32	6.03	$x^{(1)}_{2121}$	10.63	6.78	43.75
					$x^{(1)}_{22}$	64.60	40.41	90.77	$x^{(1)}_{222}$	55.94	89.44	65.60
Manufacturing	$x^{(2)}_1$	59.91	96.70	1.01	$x^{(2)}_{11}$	3.24	58.49	69.45	$x^{(2)}_{111}$	23.20	55.68	11.15
					$x^{(2)}_{12}$	76.93	19.63	89.79	$x^{(2)}_{112}$	48.31	74.48	46.60
					$x^{(2)}_{121}$	95.77	22.72	95.06	$x^{(2)}_{122}$	98.22	59.21	52.37
	$x^{(2)}_2$	96.54	54.14	37.75	$x^{(2)}_{21}$	13.41	25.08	18.25	$x^{(2)}_{211}$	97.09	17.84	70.21
					$x^{(2)}_{212}$	71.56	64.70	18.37	$x^{(2)}_{2121}$	93.52	93.93	33.57
					$x^{(2)}_{22}$	36.12	94.01	1.87	$x^{(2)}_{222}$	90.69	67.61	62.82
End-of-life	$x^{(3)}_1$	96.63	86.98	53.12	$x^{(3)}_{11}$	10.24	83.77	88.13	$x^{(3)}_{111}$	92.16	48.51	47.55
					$x^{(3)}_{12}$	86.18	62.26	58.38	$x^{(3)}_{112}$	44.78	63.45	73.41
					$x^{(3)}_{121}$	75.40	69.09	16.25	$x^{(3)}_{122}$	65.72	46.44	11.27
	$x^{(3)}_2$	3.55	67.85	76.99	$x^{(3)}_{21}$	82.63	74.27	54.16	$x^{(3)}_{211}$	41.86	87.96	96.01
					$x^{(3)}_{212}$	78.31	16.67	59.22	$x^{(3)}_{2121}$	97.62	29.31	90.25
					$x^{(3)}_{22}$	41.19	76.40	41.04	$x^{(3)}_{222}$	82.98	98.18	82.04

V. SENSITIVITY ANALYSIS FOR THE NUMERICAL EXAMPLE

The purpose of the sensitivity analysis is to see how the change in the values of the specified mass ratio (α), energy ratio (β) and economic value ratio (γ) will affect current optimum system boundary. It is known that the user the values of those parameters are to one the more processes are included in the system boundary. However the magnitude of the effect needs to be known. In order to see how the total number of processes inside system boundary changes the following approaches will be followed.

- One parameter will be varied from 0.9 to 1.0 and the other two parameters will be kept at 0.90, shown in Fig. 2.
- Two parameters will be varied from 0.9 to 1.0 and the other parameter will be kept at 0.9, shown in Fig. 3, 4 and 5.

Fig. 2 shows that all parameters have the same effect to the change in total number of processes included inside the system boundary if they are varied from 0.9 to 0.92. From 0.92 to 0.94 the change in β and γ has more effect to total number of processes inside the system boundary than the change in α . From 0.94 to 0.95, γ has the highest effect to total number of processes included inside the system boundary and is followed by β . The effect of β and γ stops at 0.95 because when β and γ are higher than 0.95 then there is no feasible solution for the problem. Furthermore, Fig. 2 shows that the highest effect to the change in total

number of processes included inside the system boundary occurs when α is varied from 0.95 to 0.96. Finally the effect of α stops at $\alpha = 0.96$ because when $\alpha > 0.96$ there is no feasible solution for the problem.

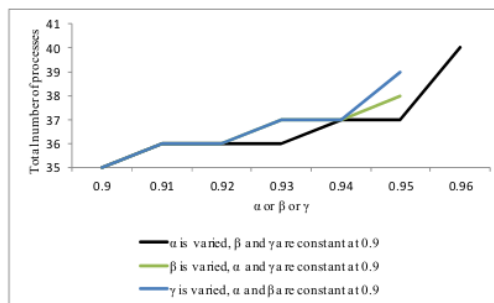


Fig. 2. Change in total number of processes inside system boundary when one parameter is varied one at a time

Fig. 3 shows that when α and β are simultaneously changed and economic value ratio γ is kept at 0.90 then the change in total number of processes included inside the system boundary increases from 36 to 40. From Fig. 3, it can be inferred that the total number of processes included inside the system boundary significantly increases when α increases from 0.95 to 0.96. The change in total number of processes included inside the system boundary when α and β are simultaneously changed and β is kept at 0.90 is shown in Fig. 4. Fig. 4 shows that the minimum number of processes that can be achieved inside the system boundary is 35 and the highest number of processes inside the system boundary is 40. Similar to

10
 Fig. 3, in Fig. 4 the total number of processes inside the system boundary significantly increases when α increases from 0.95 to 0.96. This result confirms Fig. 2.

Fig. 5 shows how total number of processes included inside the system boundary changes when β and γ are simultaneously changed and α is kept at 0.90. From the figure, it can be seen that the minimum and maximum number of processes obtained are 35 and 39 respectively. Fig. 5 also shows that the total number of processes increases gradually from 35 to 39.

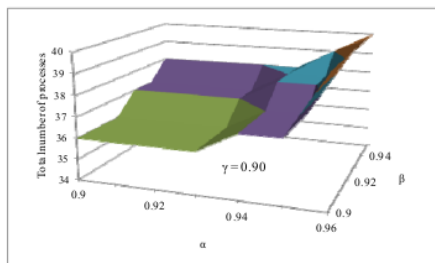


Fig. 3. Change in total number of processes inside system boundary when α and β are varied, $\gamma = 0.90$

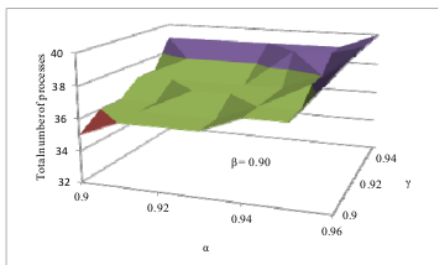


Fig. 4. Change in total number of processes inside system boundary when α and γ are varied, $\beta = 0.90$

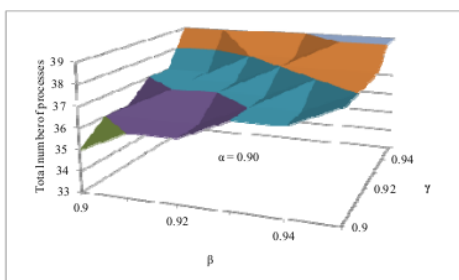


Fig. 5. Change in total number of processes inside system boundary when β and γ are varied, $\alpha = 0.90$

VI. DISCUSSION AND CONCLUSION

3
 This paper presents an improved binary linear programming approach for LCA system boundary identification. The main contribution of this work is that it provides an alternative methodology in determining

26
 which unit processes are to be included or excluded in an LCA study system boundary. According to [6], LCA system boundary selection method should be quantitative and repeatable, simple, reflect the significant of input/output relative to the system as a whole. The propose approach satisfies these criteria. However it also posses some limitations: (1) similar to the process analysis approach, the unit processes included in the model are limited within the chosen system boundary and (2) the propose method cannot reflect the environmental significant of the unit processes since only mass, energy and economic ratios are used in the model. By considering the above strength and weaknesses, for future research, it is suggested that before the optimization approach is conducted, a systematic approach is utilized in order to determine unit processes included in the model. It is seemed that the I/O LCA approach has potential for this purpose.

REFERENCES

- [1] ISO 14041, *Environmental Management - Life Cycle Assessment - Goal and Scope Definition and Inventory Analysis*, International Organization for Standardization, 1998.
- [2] SAIC: Scientific applications international corporation, *Life cycle assessment: principle and practice*, National Risk Management Research Laboratory Office of Research and Development and U.S. Environmental Protection Agency, Cincinnati, OH, USA, 2006.
- [3] Tillman, A. M., Ekvall, T., Baumann, H., Rydberg, T., "Choice of System Boundary in Life Cycle Assessment", *Journal of Cleaner Production*, vol. 2, no. 1, pp. 21 – 29, 1994.
- [4] Finveden, G., Hauschild, M. Z., Ekvall, T., Guinée, J., Heijungs, R., Hellweg, S., Koehler, A., Pennington, D., Suh, S., "Recent Development in Life Cycle Assessment", *Journal of Environmental Management*, vol. 91, pp. 1-21, 2009.
- [5] Suh, S., Lenzen, M., Treloar, G. J., Hondo, H., Horvath, A., Huppes, G., Jolliet, O., Klann, U., Krewitt, W., Moriguchi, Y., Munksgaard, J., Norris, G., "System Boundary Selection in Life-Cycle Inventories Using Hybrid Approaches", *Environmental Science & Technology*, vol. 38, no. 3, pp. 657-664, 2004.
- [6] Raynolds, M., Fraser, R., Checkel, D., "The Relative Mass-Energy-Economic (RMEE) Method for System Boundary Selection", *International Journal of Life Cycle Assessment*, vol. 5, no. 1, pp. 37 – 46, 2000.
- [7] Afinaldi, F., Zhang, H-C., Carrel, J., "A Binary Linear Programming Approach for LCA System Boundary Identification", in *Proc. 20th CIRP International Conference on Life Cycle Engineering*, pp. 435-440, Singapore, 2013.
- [8] Suh, S., Huppes, G., "Methods for Life Cycle Inventory of a Product", *Journal of Cleaner Production*, vol. 13, no. 1, pp. 687-697, 2005.

An Improved

ORIGINALITY REPORT

15%

SIMILARITY INDEX

9%

INTERNET SOURCES

13%

PUBLICATIONS

0%

STUDENT PAPERS

PRIMARY SOURCES

1	"Re-engineering Manufacturing for Sustainability", Springer Nature, 2013 Publication	3%
2	www.depts.ttu.edu Internet Source	1%
3	Sangwon Suh, Manfred Lenzen, Graham J. Treloar, Hiroki Hondo et al. "System Boundary Selection in Life-Cycle Inventories Using Hybrid Approaches", Environmental Science & Technology, 2004 Publication	1%
4	uir.unisa.ac.za Internet Source	1%
5	Marlene Arangú, Miguel Salido. "A fine-grained arc-consistency algorithm for non-normalized constraint satisfaction problems", International Journal of Applied Mathematics and Computer Science, 2011 Publication	1%

"Tools and Algorithms for the Construction and

6

Analysis of Systems", Springer Science and Business Media LLC, 2007

Publication

1%

7

scholarsmine.mst.edu

Internet Source

1%

8

Graham J. Treloar, Peter E.D. Love, Gary D. Holt. "Using national input/output data for embodied energy analysis of individual residential buildings", Construction Management and Economics, 2001

Publication

<1%

9

Marlo Raynolds, Roydon Fraser, David Checkel. "The Relative Mass-Energy-Economic (RMEE) Method for System Boundary Selection", The International Journal of Life Cycle Assessment, 2000

Publication

<1%

10

"Software Technologies for Embedded and Ubiquitous Systems", Springer Science and Business Media LLC, 2009

Publication

<1%

11

www.overleaf.com

Internet Source

<1%

12

learningwitherrors.org

Internet Source

<1%

13

Parosh Aziz Abdulla, Aletta Nylén. "Chapter 5

Timed Petri Nets and BQOs", Springer Science and Business Media LLC, 2001

Publication

<1%

14

ascelibrary.org

Internet Source

<1%

15

www.dsa.unipr.it

Internet Source

<1%

16

citeseerx.ist.psu.edu

Internet Source

<1%

17

Nan Zhang, Ellen Townes-Anderson.
"Regulation of Structural Plasticity by Different Channel Types in Rod and Cone Photoreceptors", The Journal of Neuroscience, 2002

Publication

<1%

18

link.springer.com

Internet Source

<1%

19

worldwidescience.org

Internet Source

<1%

20

www.irbnet.de

Internet Source

<1%

21

A. N. Nedashkovska. "Solving polynomial nonlinear matrix equations by a linearization method", Cybernetics and Systems Analysis, 2006

Publication

<1%

22

openaccess.leidenuniv.nl

Internet Source

<1%

23

silo.tips

Internet Source

<1%

24

jp1.estis.net

Internet Source

<1%

25

Li, Hua, Hong Chao Zhang, John Carrell, and Derrick Tate. "Use of an energy-saving concept to assess life-cycle impact in engineering", International Journal of Sustainable Manufacturing, 2010.

Publication

<1%

26

caafi.org

Internet Source

<1%

27

minerva-access.unimelb.edu.au

Internet Source

<1%

28

es.scribd.com

Internet Source

<1%

29

amsdottorato.unibo.it

Internet Source

<1%

30

fr.scribd.com

Internet Source

<1%

31

mafiadoc.com

Internet Source

<1%

32

elib.uni-stuttgart.de

Internet Source

<1%

33

Marlo Reynolds. "The relative mass-energy-economic (RMEE) method for system boundary selection Part 1: A means to systematically and quantitatively select LCA boundaries", The International Journal of Life Cycle Assessment, 01/2000

Publication

<1%

34

Rebitzer, G.. "Life cycle assessment", Environment International, 200407

Publication

<1%

Exclude quotes On

Exclude matches Off

Exclude bibliography On