

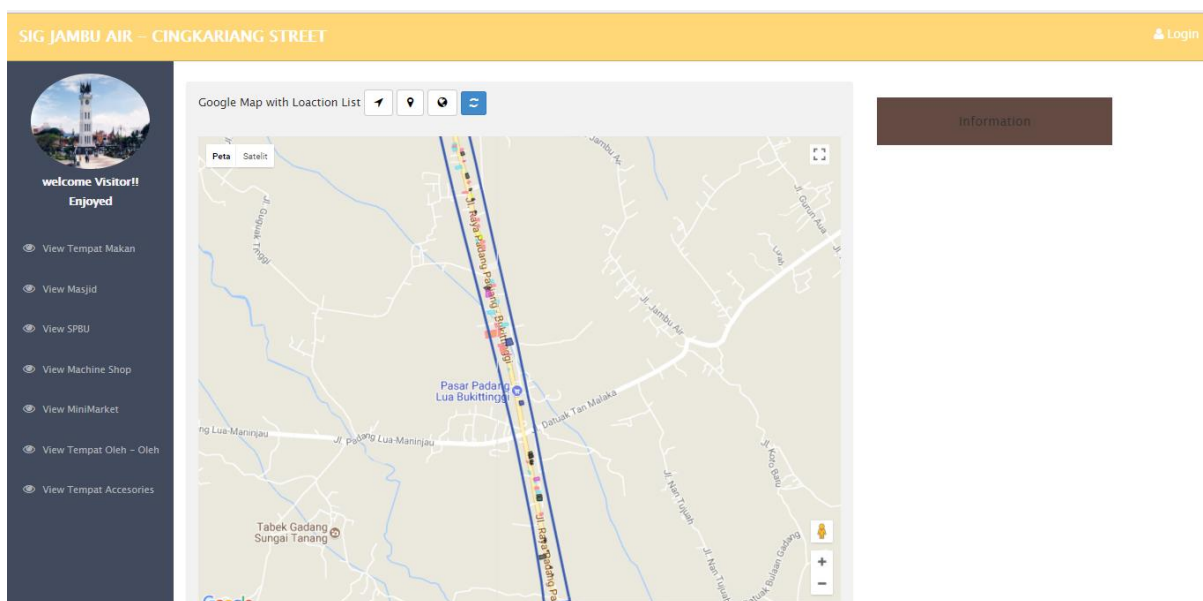
**APLIKASI WEB GIS TEMPAT MAKAN PENUNJANG WISATA
HALAL BUKITTINGGI DI SEPANJANG JALAN JAMBU AIR –
CINGKARIANG**

**SURYA AFNARIUS
SISTEM INFORMASI
UNIVERSITAS ANDALAS**

PROGRAM APLIKASI WEB GIS TEMPAT MAKAN PENUNJANG WISATA HALAL BUKITTINGGI DI SEPANJANG JALAN JAMBU AIR – CINGKARIANG

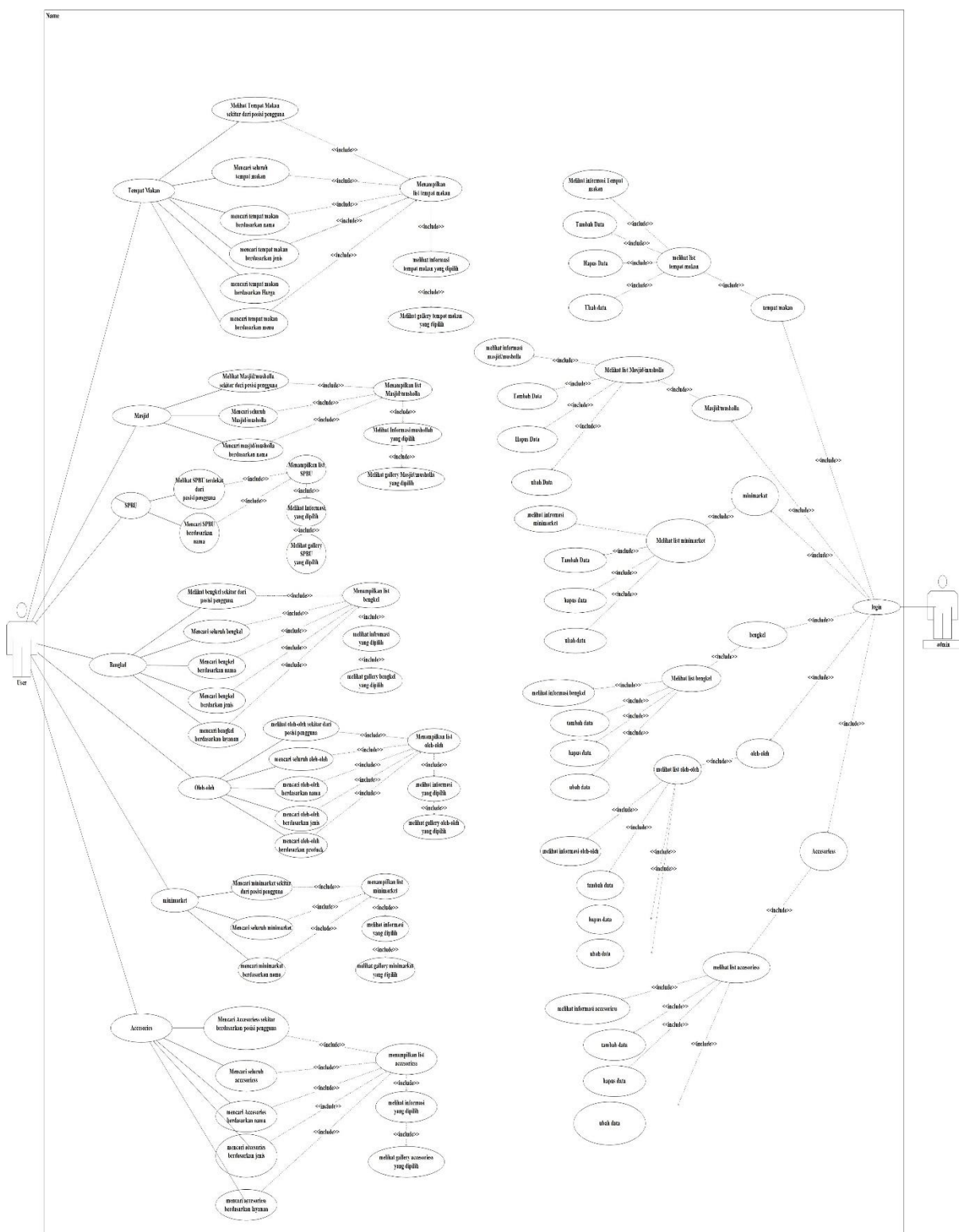
Ada 5 (lima) program ciptaan (APLIKASI WEB GIS) yang akan didaftarkan, yaitu program untuk:

1. Mencari tempat makan berdasarkan menu
2. Mencari tempat makan berdasarkan jenis
3. Menampilkan detail informasi tempat makan
4. Menampilkan galeri tempat makan
5. Menampilkan rute Google Maps dari posisi pengguna menuju tempat makan



SURYA AFNARIUS
SISTEM INFORMASI
UNIVERSITAS ANDALAS

Usecase diagram aplikasi WEB GIS tempat makan penunjang wisata halal Bukittinggi sepanjang jalan Jambu Air - Cingkariang



Lima program yang akan didaftarkan ciptaannya

1. Mencari tempat makan berdasarkan menu

a. Use case scenario

Tabel 1 Skenario Mencari tempat makan berdasarkan menu

<i>Use Case name</i>	Mencari tempat makan berdasarkan menu andalan
<i>Actor</i>	Pengguna
<i>Flow of Event</i>	1. Pengguna memilih <i>based on menu</i> pada sub menu tempat makan 2. Pengguna menekan <i>button search</i> 3. Sistem menampilkan data hasil pencarian
<i>Entry Condition</i>	Pengguna telah membuka aplikasi
<i>Exit Condition</i>	Pengguna menerima hasil pencarian berupa <i>marker</i> dan list tempat makan

b. Code

- Javascript

```
function carimenu()
{
    $('#hasilik').show();
    $('#hasilcaril').show();
    $('#hasilcari').empty();
    var xx = document.getElementById('menu1')
    if(xx.value=='')
    {
        alert("Data Did Not Exist !");
    }
    else
    {
        // $('#tampilistik').empty();
        $('#hasilcari').append("<thead><th>Name Of food Place</th><th colspan='2'>Action</th></thead>");
        var jema12 = document.getElementById('menu1').value;
        console.log(jema12);
        hapusInfo();
        // clearangkot();
        hapusRadius();
        hapusMarkerTerdekat();
        $.ajax
        ({
            url: server+'menu.php?menu='+jema12, data: "", dataType:
'json', success: function(rows)
            {
                if(rows==null)
                {
                    alert('Data Did Not Exist !');
                }
            }
        })
    }
}
```

```

    }
    for (var i in rows)
    {
        var row      = rows[i];
        var id_rm    = row.id_rm;
        var id_menu  = row.id_menu;
        //var price  = row.price;
        var name     = row.name;
        var name1    = row.name1;
        // var owner=row.owner;
        // var parking_area=row.parking_area;
        // var close=row.close;
        // var open=row.open;
        // var cp=row.cp;
        // var special=row.special;
        // var halal=row.halal;
        // var facility=row.facility;
        var latitude = row.latitude ;
        var longitude = row.longitude ;
        centerBaru  = new google.maps.LatLng(latitude,
        longitude);
        marker = new google.maps.Marker
        ({
            position: centerBaru,
            map: map,
            icon: "assets/img/naw.png",
        });
        // console.log(lat);
        // console.log(lon);
        markersDua.push(marker);
        map.setCenter(centerBaru);
        map.setZoom(14);
        console.log(id_menu);
        $('#hasilcari').append("<tr><td>"+name+"</td><td><a
role='button'              class='btn                  btn-success'
onclick='detailmpemakan(\""+id_rm+"\") '>Show</a></td>");
        }
    }
    });
}
}
}

```

- menu.php

```

<?php
require 'connect.php';
$id = $_GET["menu"];
$querysearch      ="select              a.name,              b.name1,a.id_rm,
st_x(st_centroid(a.geom)) as longitude, st_y(st_centroid(a.geom)) as
latitude from rm_tempat_makan as a
left join rm_detail_food as c on a.id_rm=c.id_rm left join rm_menu
as b on c.id_menu=b.id_menu
where b.id_menu='$id'
              ";
$hasil=pg_query($querysearch);
while($row = pg_fetch_array($hasil))
{
        $id_rm=$row['id_rm'];
        $id_menu=$row['id_menu'];
        $name=$row['name'];
        $name1=$row['name1'];
}

```

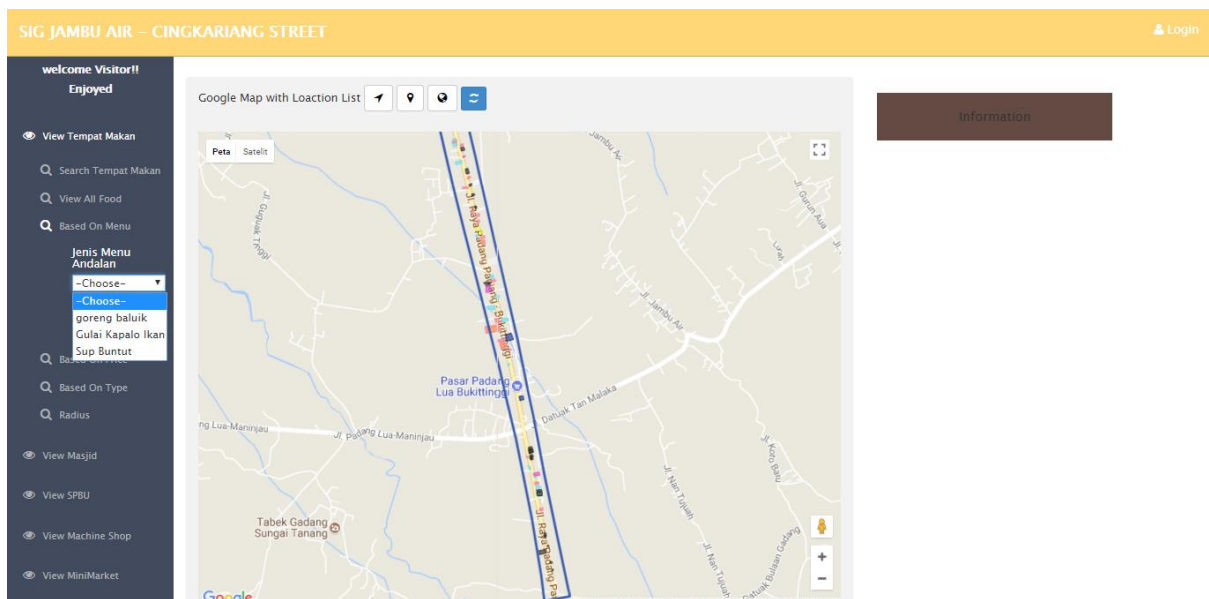
```

$longitude=$row['longitude'];
$latitude=$row['latitude'];

$dataarray[]=array('id_rm'=>$id_rm,'id_menu'=>$id_menu,
'name'=>$name,'name1'=>$name1,
'longitude'=>$longitude,'latitude'=>$latitude);
    }
echo json_encode ($dataarray);
?>

```

c. Contoh luaran program



Memilih Menu Tempat Makan

2. Mencari tempat makan berdasarkan jenis

a. Use case scenario

Tabel 2 Skenario mencari tempat makan berdasarkan jenis

<i>Use Case name</i>	Mencari tempat makan berdasarkan jenis
<i>Actor</i>	Pengguna
<i>Flow of Event</i>	<ol style="list-style-type: none"> 1. Pengguna memilih jenis pada sub menu tempat makan 2. Pengguna menekan <i>button</i> search 3. Sistem menampilkan data hasil pencarian
<i>Entry Condition</i>	Pengguna telah membuka aplikasi

<i>Exit Condition</i>	Pengguna menerima hasil pencarian berupa <i>marker</i> dan list tempat makan
-----------------------	--

b. Code

- Javascript

```
function cajenismakan()
{
  $('#hasilik').show();
  $('#hasilcari1').show();
  $('#hasilcari').empty();
  //console.log('wkwkwk');
  var carijenismakan = document.getElementById('jema')
  if(carijenismakan.value=='')
  {
    alert("Data Did Not Exist  !");
  }
  else
  {
    // $('#tampillistik').empty();
    $('#hasilcari').append("<thead><th>Name Tempat Makan</th><th colspan='2'> Action</th></thead>");
    var jema = document.getElementById('jema').value;
    console.log(jema);
    hapusInfo();
    // clearangkot();
    hapusRadius();
    hapusMarkerTerdekat();
    $.ajax
    ({
      url: server+'find_type_rm.php?cari_jenis='+jema, data: "",
      dataType: 'json', success: function(rows)
      {
        if(rows==null)
        {
          alert('Data Did Not Exist !');
        }
        for (var i in rows)
        {
          var row      = rows[i];
          var id_rm = row.id_rm;
          var name = row.name;
          var owner=row.owner;
          var parking_area=row.parking_area;
          var close=row.close;
          var open=row.open;
          var cp=row.cp;
          var special=row.special;
          var halal=row.halal;
          var facility=row.facility;
          var id_typefood  = row.id_typefood;
          var latitude=row.latitude;
          var longitude=row.longitude;
          centerBaru = new google.maps.LatLng(latitude, longitude);
```

```

        marker = new google.maps.Marker
        (
            position: centerBaru,
            map: map,
            icon: "assets/img/now.png",
        );
        // console.log(lat);
        // console.log(lon);
        markersDua.push(marker);
        map.setCenter(centerBaru);
        map.setZoom(14);
        console.log(name);
    $('#hasilcari').append("<tr><td>"+name+"</td><td><a   role='button'
class='btn                               btn-success'
onclick='detailmpekmakan(\""+id_rm+"\" )>Show</a></td>");
    }
    }
});
}
}

```

- **find_type_rm.php**

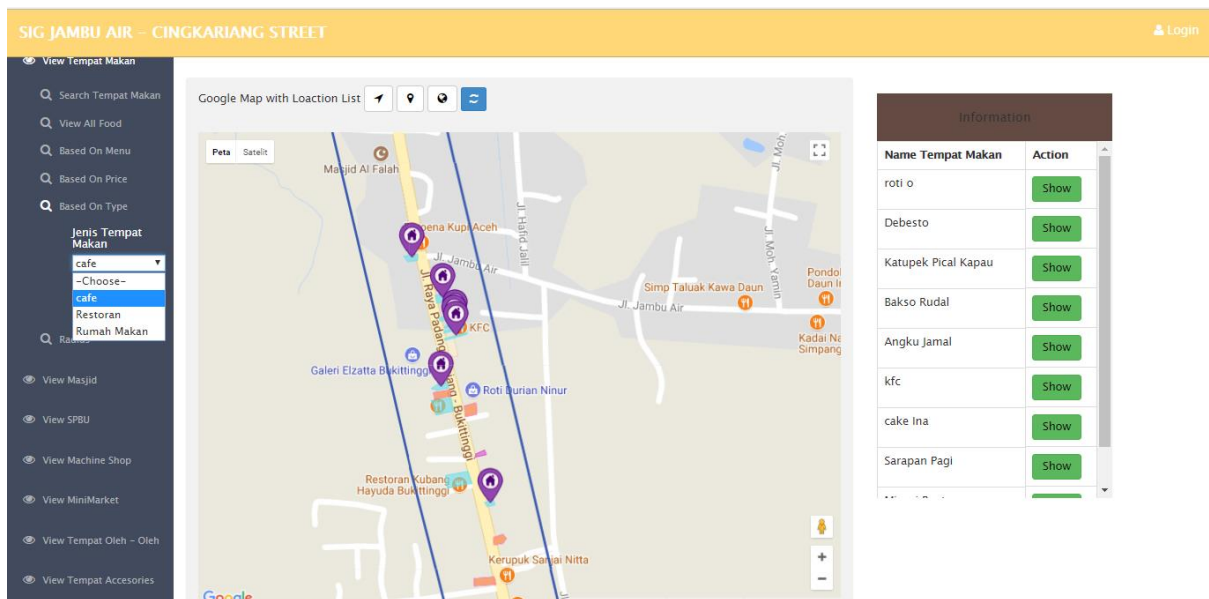
```

<?php
require 'connect.php';
$cari_jenis = $_GET["cari_jenis"];
$querysearch = "SELECT      distinct      id_rm,      name,id_typefood,
st_x(st_centroid(geom)) as longitude,
st_y(st_centroid(geom)) as latitude      from      rm_tempat_makan      where
id_typefood='".$cari_jenis'";
$hasil=pg_query($querysearch);
while($row = pg_fetch_array($hasil))
    {
        $id_rm=$row['id_rm'];
        $name=$row['name'];
        $id_typefood=$row['id_typefood'];

        $longitude=$row['longitude'];
        $latitude=$row['latitude'];
        $dataarray[]=array('id_rm'=>$id_rm,'name'=>$name,'id_typefood'=>$id_typef
ood,'longitude'=>$longitude,'latitude'=>$latitude);
    }
    echo json_encode ($dataarray);
?>

```


c. Contoh luaran program



Memilih jenis tempat makan

3. Menampilkan detail informasi tempat makan

a. Use case scenario

Tabel 3 Skenario Menampilkan Detail Informasi Tempat Makan

<i>Use Case Name</i>	Melihat informasi tempat makan yang dipilih
<i>Actor</i>	Pengguna
<i>Flow of Event</i>	<ol style="list-style-type: none"> 1. Pengguna memilih tempat makan dari <i>list</i> yang ada 2. Sistem menampilkan informasi tempat makan yang dipilih
<i>Entry Condition</i>	Pengguna telah mendapatkan <i>list</i> tempat makan
<i>Exit Condition</i>	Pengguna menerima informasi tempat makan yang dipilih pada peta

b. Code

- Javascript

```
function detailmpekmakan(id144) {
    $('#info').empty();
    hapusInfo();
}
```

```

clearroute2();
hapusMarkerTerdekat();
$.ajax({
url: server+'detailmakan.php?info='+id144, data: "", dataType:
'json', success: function(rows)
{
for (var i in rows)
{
console.log('ddd');
var row = rows[i];
var id_rm = row.id_rm;
var name = row.name;
var owner=row.owner;
var parking_area=row.parking_area;
var close=row.close;
var open=row.open;
var cp=row.cp;
var special=row.special;
var halal=row.halal;
var facility=row.facility;
var lat=row.lat;
var lng = row.lng;
centerBaru = new google.maps.LatLng(row.lat, row.lng);
marker = new google.maps.Marker
({
position: centerBaru,
icon:'assets/img/now.png',
map: map,
animation: google.maps.Animation.DROP,
});
console.log(lat);
console.log(lng);
markersDua.push(marker);
map.setCenter(centerBaru);
map.setZoom(18);
infowindow = new google.maps.InfoWindow({
position: centerBaru,
content:
" <span
style=color:black><center><b>Information</b></center><br><tr><td><i
class='fa fa-cutlery'></td><td></td><td> "+name+"</td></tr><br><tr><td><i
class='fa
fa-home'></i>owner</td><td>:</td><td>
"+owner+"</td></tr><br><tr><td><i
class='fa
fa-clock-o'></i>Open</td><td>:</td><td> "+open+"</td></tr><br><tr><td><i class='fa
fa-clock-o'></i>Close</td><td>:</td><td>
"+close+"</td></tr><br><tr><td><i class='fa fa-balance-scale'></i>Halal
State</td><td>:</td><td> "+halal+"</td></tr><br><tr><td><i class='fa fa-
coffee'></i>
Special
menu
</td><td>:</td><td>
"+special+"</td></tr><br><tr><td><i class='fa fa-car'></i>Parking
Area</td><td>:</td><td>
"+parking_area+"</td></tr><br><tr><td><i
class='fa
fa-phone'></i>Contact
Person</td><td>:</td><td>
"+cp+"</td></tr></table><table></span><br><br><input
type='button'
class='btn
btn-primary'
value='Route'
onclick='callRoute(centerLokasi,centerBaru);'/>&nbsp; <input
type='button'
class='btn btn-success' value='Galeri' onclick='galeri(\""+id_rm+"\" )'/>",
pixelOffset: new google.maps.Size(0, -33)
});
infoposisi.push(infowindow);
hapusInfo();
infowindow.open(map);
}
}

```

```

        // ;ow();tampilsekitar()
    }
    });
}

```

- **detailmpekmakan.php**

```

<?php
require 'connect.php';
$info = $_GET['info'];$querysearch ="select id_rm, name,owner,
special,parking_area, cp, fasililty,halal, open, close,
ST_X(ST_Centroid(geom)) AS lng, ST_Y(ST_CENTROID(geom)) As lat from
rm_tempat_makan where id_rm='$info'";
$hasil=pg_query($querysearch);
while($row = pg_fetch_array($hasil))
{
    $id_rm=$row['id_rm'];
    $name=$row['name'];
    $owner=$row['owner'];
    $special=$row['special'];
    $parking_area=$row['parking_area'];
    $cp=$row['cp'];
    $fasility=$row['fasility'];
    $halal=$row['halal'];
    $open=$row['open'];
    $close=$row['close'];
    $lng=$row['lng'];
    $lat=$row['lat'];

    $dataArray[]=array('id_rm'=>$id_rm,'name'=>$name,'owner'=>$owner,'special
'=>$special,'parking_area'=>$parking_area,'cp'=>$cp,'fasility'=>$fasility
,'halal'=>$halal,'close'=>$close,'open'=>$open,'lng'=>$lng,'lat'=>$lat);
}
echo json_encode ($dataArray);
?>

```

c. Contoh luaran program

The screenshot shows a web application interface for finding restaurants. The top header is "SIG JAMBU AIR - CINGKARIANG STREET" with a "Login" button. The main content area is divided into three sections:

- Left Sidebar:** Contains navigation options like "View Tempat Makan", "Search Tempat Makan", "View All Food", "Based On Menu", "Based On Price", "Based On Type", "Jenis Tempat Makan" (with a dropdown menu set to "Restoran"), "Search", "Radius", and various "View" options for specific categories like "Masjid", "SPBU", "Machine Shop", "MiniMarket", "Tempat Oleh-Oleh", and "Tempat Accessories".
- Center Map:** A Google Map showing a location in Jambu Air. A pop-up window titled "Information" displays details for "Simpang Raya", including address, opening hours, special menu, parking area, and contact person. Below the map are "Route" and "Galeri" buttons.
- Right Panel:** An "Information" table listing nearby restaurants with "Show" buttons for each.

Name Tempat Makan	Action
Restoran Kubang Hayu	Show
Garuda Minang Restau	Show
restoran Pondok Base	Show
Simpang Raya	Show

Detail informasi tempat makan yang dipilih

4. Menampilkan Gallery Foto Tempat Makan

a. Use case scenario

Tabel 4 Skenario Menampilkan Gallery Foto tempat makan

<i>Use Case Name</i>	Melihat galeri foto dari tempat makan yang dipilih
<i>Actor</i>	Pengguna
<i>Flow of Event</i>	1. Pengguna menekan <i>button</i> galeri 2. Sistem menampilkan galeri foto tempat makan yang dipilih
<i>Entry Condition</i>	Pengguna melihat <i>detail</i> tempat makan yang dipilih
<i>Exit Condition</i>	Pengguna menerima galeri foto dari tempat makan yang dipilih

b. Code

- Javascript

```
function galeri(a){  
    console.log(a);  
    window.open(server+'galeri_makan.php?idgallery='+a);  
}
```

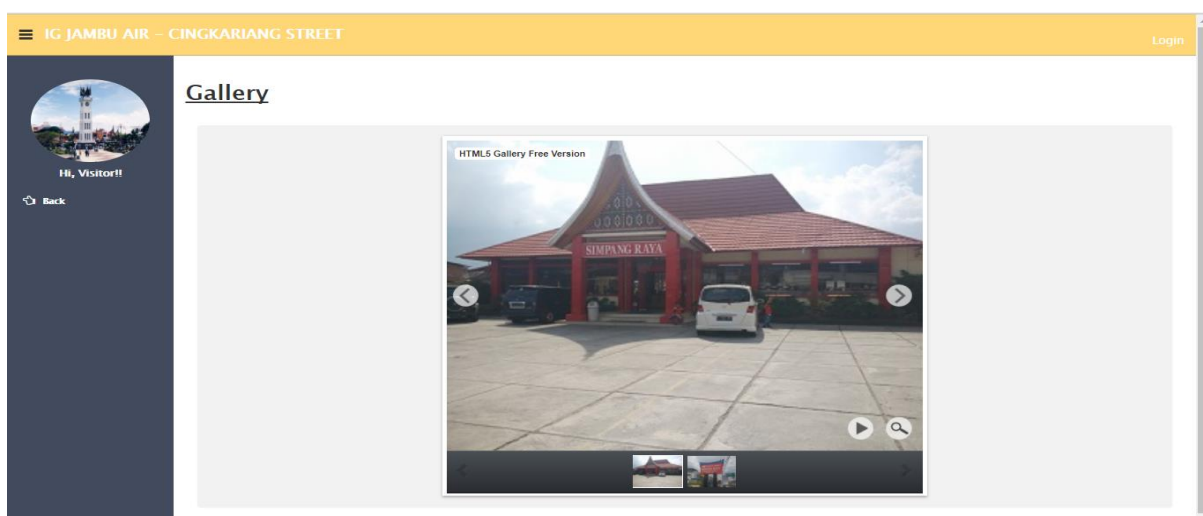
- gallery.php

```

<?php
require 'connect.php';
$id = $_GET["idgallery"];
$querysearch = " SELECT a.gallery as foto, b.id_rm from
rm_galeri_food as a left join rm_tempat_makan as b on
a.id_rm=b.id_rm where a.id_rm='$id'";
echo($querysearch);
$hasil=pg_query($querysearch);
while($baris = pg_fetch_assoc($hasil))
    {
        echo "asaaaa";
        if(($baris['foto']=='-
')||($baris['foto']==''))
            {
                echo "<a
href='assets/img/noimage.jpg'><img
src='assets/img/noimage.jpg' ></a>";
            }
        else
            {
                echo "<a
href='assets/image/makan/'".$baris['foto']."'><img
src='assets/image/makan/'".$baris['foto']."' ></a>";
            }
    }
?>

```

c. Contoh luaran program



Gallery Foto Tempat Makan

5. Menampilkan Rute Google Maps dari Posisi Pengguna Menuju Tempat Makan

a. Use case scenario

Tabel 5 Skenario Menampilkan Rute

<i>Use case name</i>	Menampilkan Rute
<i>Participating Actor</i>	User
<i>Flow Of Events</i>	1. User menekan <i>button show</i> pada objek yang dipilih
	2. Sistem menampilkan detail informasi objek yang dipilih
	3. User menekan <i>button route</i> pada objek yang dipilih
	4. Sistem menampilkan rute <i>google maps</i>
<i>Exit Condition</i>	User dapat melihat rute dari <i>google maps</i>

b. Code

- Javascript

```
function callRoute(start, end) {
    if (koordinat == 'null' || typeof(koordinat) == "undefined"){
        alert ('Klik tombol posisi saat ini terlebih dahulu');
    }
    else
    {
        //hapusRadius();
        /* if(directionsDisplay)
        {
            clearroute2();
            $("#rute").remove();
        }
        else
        {*/

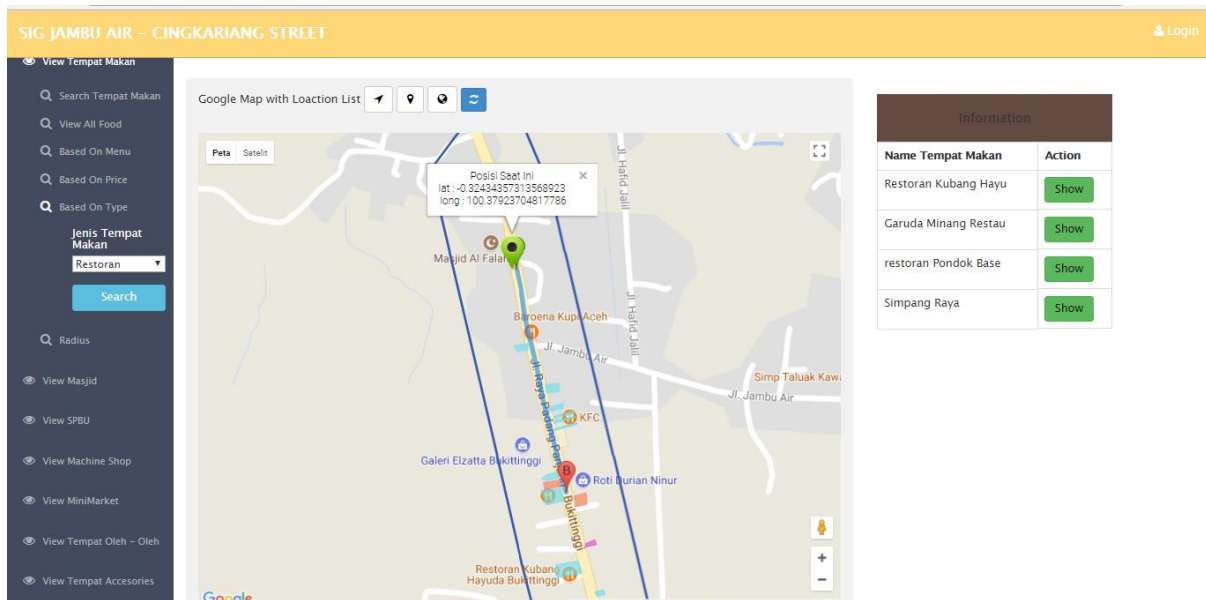
        directionsService = new google.maps.DirectionsService;
        directionsDisplay = new google.maps.DirectionsRenderer;
        directionsService.route
        (
            {
                origin: start,
                destination: end,
                travelMode: google.maps.TravelMode.DRIVING
            },
            function(response, status)
            {
                if (status === google.maps.DirectionsStatus.OK)
                {
                    directionsDisplay.setDirections(response);
                }
                else
                {
```

```

        window.alert('Directions request failed due to ' + status);
    }
}
);
directionsDisplay.setMap(map);
map.setZoom(12);
// $('#rute').append("<div class='panel panel-default'><div
class='panel-heading'><h4>Info Rute</h4></div><div class='panel-body'
id='detailrute' style='max-height:440px;' overflow:
auto;'></div></div>");
//
directionsDisplay.setPanel(document.getElementById('detailrute'));
}
}

```

c. Contoh luaran program



Rute manual yang dibuat Google Maps dari posisi pengguna saat ini menuju tempat makan yang dipilih