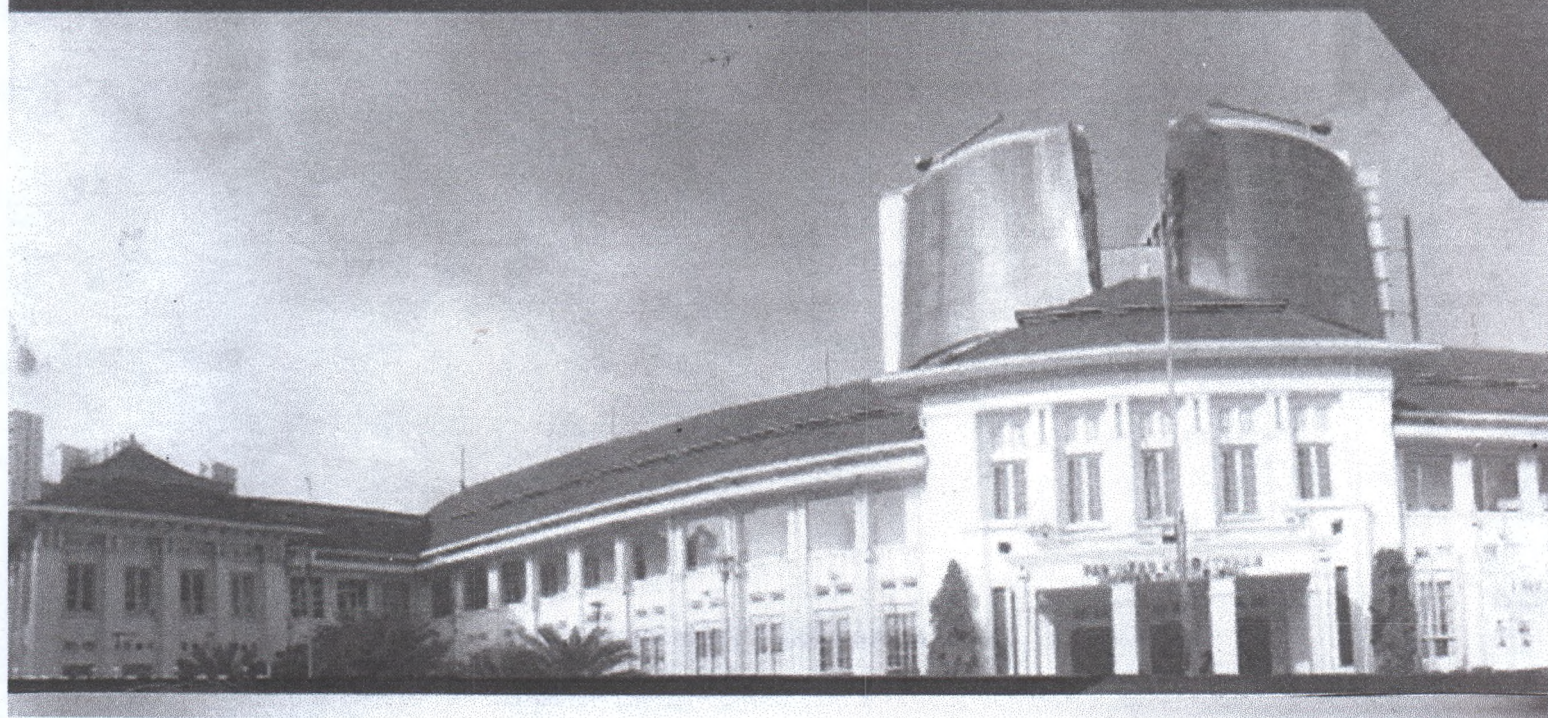


# 3<sup>rd</sup> ICE ON IMERI



## THE 3<sup>rd</sup> INTERNATIONAL CONFERENCE AND EXHIBITION ON INDONESIAN MEDICAL EDUCATION AND RESEARCH INSTITUTE (ICE on IMERI)

*"Precision Medicine: Leading Medical Research to Changing Life Results"*





## CONFERENCE INFORMATION

### **DATES**

November, 4th – 6th, 2018

### **VENUE**

Indonesian Medical Education and Research Institute (IMERI) Tower

Jl. Salemba 6, Jakarta Pusat, 10430

Phone : +62 21 3155696 / +62 2139016643

Phone/Fax : +62 21 3155696

Website : [imeri.ui.ac.id](http://imeri.ui.ac.id)

### **OFFICIAL LANGUAGE**

The conference will use English as the primary language. All abstracts and presentations are in English.

### **PARTICIPANTS**

500 participants are expected

### **CONTACT**

The 3<sup>rd</sup> ICE on IMERI 2018 Conference Secretariat

CP: **Dein Iftitah** (085224571113)

**Tyas** (085695627922)

Salemba Raya No. 6, Jakarta Pusat 10430, INDONESIA

E-mail: [imeri-ic@ui.ac.id](mailto:imeri-ic@ui.ac.id)



Human Nutrition  
Clinical Research

### **Relationship between Serum Leptin Levels with Newborn Baby Growth of Maternal Obesity in Padang City, West Sumatera**

Delmi - Sulastrri, Rini - Febrianti, Muhammad - Zhikron

**Background:** Leptin is a hormone that regulates placental and fetal growth. Leptin resistance in obese pregnant women is a potential risk factor associated with baby growth. This study aims to determine the association of serum leptin levels with newborn weight/Length baby from maternal obesity in Padang City, West Sumatera.

**Method:** Observational research with the cross-sectional study was conducted on obese mothers which have given birth to babies with normal and low birth weight, each group consists of 28 samples. Samples were taken with consecutive sampling technique and data collected from several hospitals in Padang city. Leptin Placenta serum level was measured using ELISA method in a Biomedical laboratory at Andalas University.

**Result:** The result of this study are the average serum leptin level in normal birth weight group is  $32,00 \pm 22.99$  ng/mL and low birth weight group is  $18.47 \pm 16.53$  ng/mL, body length was  $48,18 \pm 1,36$  cm. There is a significant difference in leptin serum level between normal birth weight baby with low birth weight baby ( $p=0.14$ ) and there is the negative correlation between body length baby with serum leptin level ( $p=0.02$ ).

**Conclusion:** Serum leptin level is one of the risk factors for birth weight and length baby In Maternal Obesity in Padang City, West Sumatera





FACULTY OF  
MEDICINE



IMERI FKUI  
INSTITUTE FOR MEDICAL RESEARCH

AHS UI  
Academic Health System  
Universitas Indonesia



RSCM

THIS CERTIFICATE IS AWARDED TO

**Prof. Dr. dr. Delmi Sulastri, MS. SpGK**

AS

**ORAL PRESENTER**

**THE 3<sup>RD</sup> ANNUAL INTERNATIONAL CONFERENCE AND EXHIBITION ON INDOONESIAN MEDICAL  
EDUCATION AND RESEARCH INSTITUTE (ICE ON IMERI 2018)**

NOVEMBER 5<sup>TH</sup>- 6<sup>TH</sup> 2018

IMERI-FKUI BUILDING

FACULTY OF MEDICINE UNIVERSITAS INDONESIA

10/KU/PB IDI/A.4/11/2018

PARTICIPANT: 10 SKP | SPEAKER/LECTURER: 12 SKP | MODERATOR: 4 SKP | COMMITTEE: 2 SKP

DIRECTOR OF IMERI

Prof. dr. Badriul Hegar, PhD, SpA(K)

CHAIRPERSON

Dr. dr. Purwita Wijaya Laksmi, SpPD-KGER

DEAN

Prof. Dr. dr. Ari Fahrial Svam. SoPD-KGEH. MMR