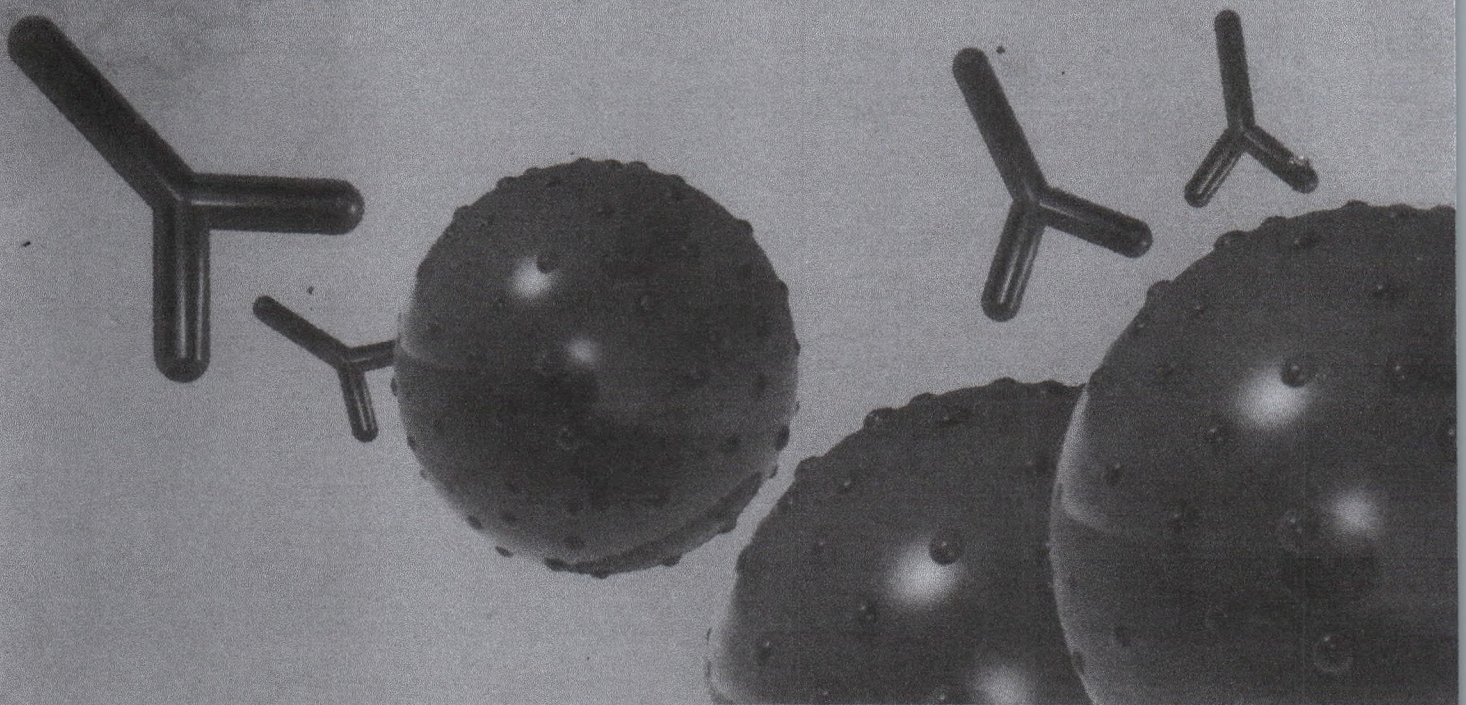


ACA

Autoimmunity Congress Asia
Singapore 17-19 November, 2011



ABSTRACTS



www.kenes.com/aca

| Presenter | Presentation |
|---------------------|---|
| Adib, K | <u>PROCALCITONIN: A MARKER OF NEONATAL SEPSIS</u> |
| Aggarwal, A | <u>CROSS TALK BETWEEN OXIDATIVE STRESS AND NK CELLS IN RHEUMATOID ARTHRITIS</u> |
| Ahamed, M | <u>EFFECT OF TAMOXIFEN THERAPY ON BLOOD LEVELS OF ANTI NUCLEAR ANTIBODIES</u> |
| Ainur, Y | <u>THE FREQUENCY OF ANTI-SM ANTIBODIES AMONG PATIENTS WITH SYSTEMIC LUPUS ERYTHEMATOSUS (SLE) IN MALAYSIA.</u> |
| Akmal, S | <u>ONTOGENIC DETENTION IN FOXP3⁺ THYMOCYTE-DEVELOPMENT CAUSES AUTOIMMUNE GASTRITIS IN CD3Z-DEFICIENT MICE</u> |
| Al-Ahmad, B | <u>SECONDARY SJOJOGREN'S SYNDROME IN FEMALE, IMMUNOLOGICAL AND HORMONAL STUDY</u> |
| Alene, F | <u>THE ROLE OF APOPTOTIC PROTEINS IN PATIENTS WITH SYSTEMIC LUPUS ERYTHEMATOSIS</u> |
| Alene, F | <u>DETECTION OF IGG ANTI- B2 GLYCOPROTEIN-I ANTIBODIES IN SAUDI PATIENTS WITH SYSTEMIC LUPUS ERYTHEMATOSIS</u> |
| Al-Jouf, S | <u>AUTOINFLAMMATORY DISEASES IN SAUDI CHILDREN</u> |
| Almofosoul, F | <u>COMPARISON OF THE NUMBER AND PHONOTYPE OF THE PERIPHERAL BLOOD T CELLS IN THE CELIAC PATIENTS AND CONTROLS</u> |
| Amath, A | <u>EVALUATION OF ANTIOXIDANT EFFECT OF 6,7-DIMETHYLESCULETIN IN EXPERIMENTAL ANTIPHOSPHOLIPID SYNDROME IN MOUSE MODEL</u> |
| Amofran, Z | <u>INHIBITION OF NITRIC OXIDE PRODUCTION AND PROINFLAMMATORY CYTOKINES BY SEVERAL MEDICINAL PLANTS</u> |
| Arzadeh Haghighi, S | <u>FATIGUE IN CANCER PATIENT UNDERGOING CHEMOTHERAPY</u> |
| As, T | <u>CLINICAL UTILITY OF PHOSPHATIDYLSERINE DEPENDENT ANTIPROTHROMBIN ANTIBODIES</u> |
| A, A | <u>A CASE REPORT: A SCLERODERMA PATIENT WITH SEVERE INTERSTITIAL LUNG DISEASE</u> |
| A, M | <u>TNF-ALPHA INHIBITS AQUAPORIN-5 EXPRESSION IN HUMAN SALIVARY GLAND ACINAR CELLS VIA SUPPRESSION OF HISTONE H4 ACETYLATION</u> |

Presentation

IMMUNE PANCREATITIS - CASE REPORT FROM A PATIENT IN SLOVENIA

IDENTIFICATION OF AUTOANTIGENS IN A PATIENT WITH VOGT-KOYANAGI-HARADA DISEASE

**THE EXPRESSION OF ADHESION MOLECULES (ICAM-1, VCAM-1 AND L-SELECTIN) ON
SYNOVIAL TISSUE OF COLLAGEN-INDUCED ARTHRITIS (CIA) RATS**

**T-B-INDEPENDENT INTERFERON- α PRODUCTION BY NEUTROPHILS IN RESPONSE TO A
MAJOR LUPUS AUTOANTIGEN**

**ACTIVATED PROTEIN C INCREASES MONOCYTIC TRANSFORMING GROWTH FACTOR (TGF)- β 1
THAT DAMPENS PRO-INFLAMMATORY INTERLEUKIN 17 SECRETING CD4⁺ T HELPER CELLS**

**MACROPHAGE ACTIVATION SYNDROME ASSOCIATED WITH ADULT ONSET STILL'S DISEASE
IN A 25 YEAR OLD MALE PRESENTING WITH JAUNDICE**

ROLES OF OPN AND IL-17 IN T-CELL-MEDIATED LIVER INJURY

TREATMENT OF DEXAMETHASONE AMELIORATES IMIQUIMOD-INDUCED PSORIASIS IN MICE

THE EXPRESSION OF ADHESION MOLECULES (ICAM-1, VCAM-1 AND L-SELECTIN) ON SYNOVIAL TISSUE OF COLLAGEN-INDUCED ARTHRITIS (CIA) RATS

E. Darwin

Histology/Immunology, Faculty of Medicine, Andalas University, Padang, Indonesia

Introduction: Rheumatoid arthritis (RA) is a systemic autoimmune disease of still-unknown etiology, characterized by proliferation of synovial tissue and accumulation of inflammatory cells in inflamed joints. Synovial cells are markedly activated by cytokines and adhesion molecules, resulting hyperplasia of the synovial tissue. However, the role of adhesion molecules in active inflammatory processes in RA remains unclear.

Aims: The aim of this study was to explore the expression of adhesion molecules (ICAM-1, VCAM-1 and L-selectin) in initiation, active and chronic phases of rheumatoid arthritis in animal model.

Methods: This study was performed on the joint of the collagen-induced arthritis (CIA) rats. Samples were taken from the animals hind paw for paraffin sections. The haematoxylin eosin staining were applied on the section to confirm the histopathologic appearance of the rheumatoid arthritis phases. Indirect immunohistochemical staining method was used to determine the expression of the adhesion molecules (ICAM-1, VCAM-1 and L-selectin).

Results: Histologically, the joint tissues showed confirmed appearance with the phases of RA. Laboratory test for rheumatoid factor (RF) showed seronegative titer in all group. Using Kruskal-Wallis, Anova and LSD test, it was found that there was significant difference between the expression of ICAM-1, VCAM-1 and L-selectin on synovial tissue of the initiation, active and chronic phases of RA in compared to control group. It seem to be predominate in active phase than initiation and chronic phases of RA.

Conclusion: It is suggested that adhesion molecules (ICAM-1, VCAM-1, L-selectin) may indicate they relative importance in mediating active inflammation within joint.

Why is this paper novel? Adhesion molecules (ICAM-1, VCAM-1 and L-selectin) play a role in inflammatory process of rheumatoid arthritis. This result may inform available phase of rheumatoid arthritis which become anti-cytokine therapy

THE EXPRESSION OF ADHESION MOLECULES (ICAM-1, VCAM-1 AND L-SELECTIN) ON SYNOVIAL TISSUE OF COLLAGEN-INDUCED ARTHRITIS (CIA) RATS

Eryati Darwin
Faculty of Medicine Andalas University
Padang-Indonesia

Introduction

Rheumatoid arthritis (RA)

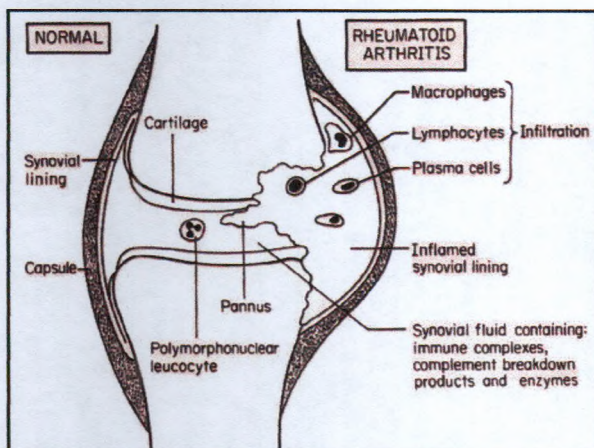
- systemic autoimmune disease of still-unknown etiology
- characterized by proliferation of synovial tissue
- accumulation of inflammatory cells in inflamed joints.
- Synovial cells are markedly activated by cytokines and adhesion molecules

Histopathological appearance (1)

- Abnormalities of structure and function of the synovium : synovitis
- in the early of disease: prominent tissue edema, vascular proliferation, hyperplasia of the synovial lining and inflammatory cell infiltrate the sublining layer
- In acute phase: PMN migrate together with edema fluid into the synovial cavity, infiltrate synovial tissue, growth the fibrovascular granulation tissue: pannus

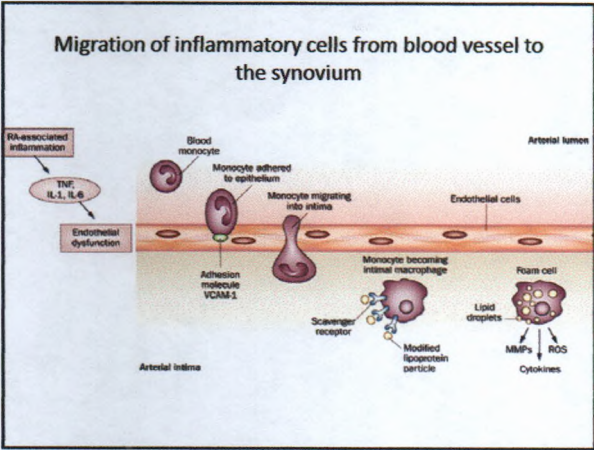
Histological appearance (2)

- In chronic and progressive disease: pannus invasive to the joint cartilage and bone, cause erosion of joint cartilage
- Subintima layer infiltrated by mononuclear cells (B and T lymphocytes, macrophages and plasma cells) forming the active lymph node follicles so its suggest that the immunoglobulin synthesized in this tissue.



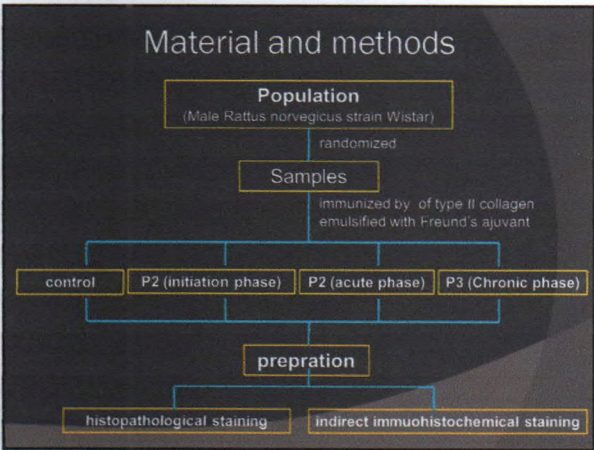
Pathogenesis

- Partially unknown
- Role of genetics and non genetics : the joints, joint cartilage, synovium, cytokines
- Immunological process :
 - inflammatory response to self antigen (arthritisogenic) cause T lymphocytes spontaneously out of the blood vessels
 - activate the expression of adhesion molecules ICAM-1 and VCAM-1 in endothelial cells of blood vessels
 - Migration of inflammatory cells



The Aim of Study

- to explore the expression of adhesion molecules (ICAM-1, VCAM-1 and L-selectin) in initiation, active and chronic phases of rheumatoid arthritis.



Results

| CIA rats | Swelling of the joints | Histological appearance |
|------------------------|------------------------|--|
| Initiation phase of RA | No swelling | slightly thickened synovial tissue , with small blood vessels, especially venules. infiltration of inflammatory cells, fibroblasts and fibrosit. |
| Acute phase of RA | Swelling ++, red | Joint cartilage erosion, very thick synovial, increased number of blood vessels, infiltrated of macrophages, plasma cel, diffuse infiltration of lymphocytes form follicles. |
| Chronic phase of RA | Swelling + | Joint cartilage damage, invasion of panus to synovial cavity, small blood vessels, fat cells, fibroblasts, fibrosit,diffuse plasma cells, lymphocytes, giant cell, necrotic tissue |

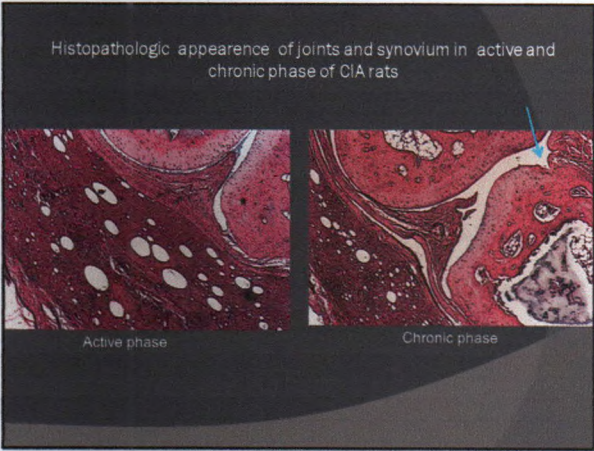
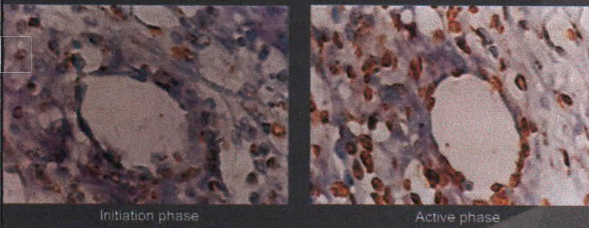


Table : Percentage of adhesion molecules ICAM-1, VCAM-1 and L-selectin expression on synovial tissue of control group (K), initiation (P1), active (P2) and chronic (P3) phaseof rheumatoid arthritis in CIA rats

| GROUP | ICAM-1 | VCAM-1 | SELECTIN-L |
|-----------------|-------------|-------------|-------------|
| K (kontrol) | 0,10±0,316 | 0,30±0,675 | 0,20±0,632 |
| P1 (initiation) | 21,00±6,272 | 13,00±3,944 | 15,60±5,854 |
| P2 (active) | 46,00±8,479 | 29,10±6,454 | 31,10±9,620 |
| P3 (chronic) | 29,30±6,019 | 19,60±5,700 | 25,80±5,884 |

Expression of VCAM-1 on synovial tissue in initiation phase and active phase of rheumatoid arthritis in CIA rats



Conclusion

1. Expression of adhesion molecules ICAM-1, VCAM-1 and L-selectin are increase on synovial tissue in initiation phase, active phase and chronic phase of rheumatoid arthritis in CIA rats.
2. Increasing the expression of adhesion molecules ICAM-1, VCAM-1 and L-selectin are highest in the active phase of rheumatoid arthritis in CIA rats



Certificate of Attendance

This is to certify that
Eryati Darwin

participated in the



ACA
Autoimmunity Congress Asia
Singapore 17-19 November, 2011

Y. Shoenfeld

Y. Shoenfeld, MD, FRCP
Honorary Congress President

Pao-Hsui Feng

Pao-Hsui Feng
Congress Co Chairman

Kok-Yong Fong

Kok-Yong Fong
Congress Co Chairman

Current Folder: **INBOX**[Sign Out](#)[Compose](#) [Addresses](#) [Folders](#) [Options](#) [Search](#) [Help](#) [Calendar](#) [Notes](#)[Message List](#) | [Unread](#) | [Delete](#)[Previous](#) | [Next](#)[Forward](#) | [Forward as Attachment](#) | [Reply](#) | [Reply All](#)**Subject:** ACA 2011 - Oral Acceptance Notification A-331-0001-00209**From:** "ACA 2011" <aca2011@abstractserver.com>**Date:** Tue, August 23, 2011 3:39 pm**To:** eryatidarwin@fk.unand.ac.id**Cc:** dekanat@fk.unand.ac.id**Priority:** High**Options:** [View Full Header](#) | [View Printable Version](#) | [Download this as a file](#)

```
body{font-size:10pt;font-family:verdana,arial,Helvetica,sans-serif;}
td{font-size:10pt;font-family:verdana,arial,Helvetica,sans-serif;}
p{font-size:10pt;font-family:verdana,arial,Helvetica,sans-serif;}
li{font-size:10pt;font-family:verdana,arial,Helvetica,sans-serif;}
```

Abstract Presentation Notification

The 5th Autoimmunity Congress Asia - ACA 2011

Singapore, November 17-19, 2011

Dear Eryati Darwin,

On behalf of the Scientific Programme Committee, we are pleased to inform you that your abstract A-331-0001-00209 entitled "The Expression of Adhesion Molecules (ICAM-1, VCAM-1 and L-selectin) on synovial tissue of collagen-induced arthritis (CIA) rats" has been selected for ORAL PRESENTATION at the 5th Autoimmunity Congress Asia, Singapore, 17-19 November 2011.

Details of the session in which your abstract is scheduled are listed below:

Session Title: Novel aspects of pathogenetic mechanisms in autoimmunity

Session Date: Friday, Nov 18

Session Time: 16:30-18:30

Your oral presentation is 10 minutes long. Detailed guidelines for the preparation of your presentation, equipment available and the PowerPoint presentation upload procedures are available on the congress website on <http://www2.kenes.com/aca/sci/Pages/InstructionsforPresenters.aspx#oral>.

Please do visit the congress website at www2.kenes.com/aca regularly for any updates or changes to the Scientific Programme.

http://mail.unand.ac.id/webmail/src/read_body.php?mailbox=INBOX&passed_id=97... 23/08/2011

CONFIRMATION OF REGISTRATION TO THE CONFERENCE

The presenting author Eryati Darwin must confirm his/her attendance and register the conference.

1. If you have not already registered and paid your registration fees you requested to do so online via the link:
<http://www2.kenes.com/aca/req/Pages/Registration.aspx>.

Only abstracts of participants who have paid their fees by Monday, September 19, 2011 will be included in the program and abstract book.

2. We also encourage you to book your accommodation promptly, as availability be limited in some hotels. Click on
<http://www2.kenes.com/aca/acc/Pages/HotelAccommodation.aspx> for more information available hotels for the congress.

FURTHER INFORMATION

For technical questions regarding your abstract submission please contact aca2011@abstractserver.com. For all other queries, please do contact the secretariat at aca@kenes.com.

Yours sincerely,

ACA 2011 Abstract Team on behalf of the Scientific Programme Committee

[Delete & Prev](#) | [Delete & Next](#)

Move to: INBOX ▾ Move

Autoimmunity Congress Asia, Singapore, November 17-19, 2011

Thursday, November 17, 2011

| | HALL A | HALL B |
|--------------|--|--------|
| 14:00 | | |
| 15:00 -16:30 | AUTOANTIBODIES –IMPLICATIONS IN LABORATORY AND IN CLINICAL PRACTICE <i>Satellite Symposium sponsored by BIORAD</i> Chairpersons: Yehuda Shoenfeld, Israel Tom Williamson, USA | |
| 15:00-15:40 | Laboratory testing could be hazardous for your health - A look at test utilization for autoantibody testing Michael Astion, USA | |
| 15:40-15:20 | Autoantibody case studies: Translating lab results into clinical practice Thomas Alexander, USA | |
| 15:20-16:30 | Questions & Answers | |

Autoimmunity Congress Asia, Singapore, November 17-19, 2011

Thursday, November 17, 2011

| | HALL A | HALL B |
|-------------|--|--------|
| 16:30-18:30 | Plenary Session 1 – Autoimmunity 2012 Chairpersons: Pao-Hsii Feng, Singapore Kok-Yong Fong, Singapore | |
| 16:30-16:50 | The enigma of autoimmune liver diseases M. Eric Gershwin, USA | |
| 16:50-17:10 | Tolerogenic detritic cells in immune tolerance Ho Youn Kim, Korea | |
| 17:10-17:30 | Micromanagement of lupus autoimmunity by microRNAs Shen Nan, Shanghai | |
| 17:30-17:50 | Complement & autoimmunity Roberto Perricone, Italy | |
| 17:50-18:10 | Regulation of TH1/TH17 differentiation and relapsing EAE by B7-H4-IG: A potential novel immunotherapy for autoimmune disease Stephen Miller, USA | |
| 18:10-18:20 | Regulation of microRNA-155 of the atherosclerotic immuno- inflammatory responses by targeting MAP3K10 Hui Yan, China | |
| 18:20-18:30 | Presence of atherosclerosis in the Polish SLE patients (pts) Martyna Meissner, Poland | |
| 18:30-19:15 | | |
| 19:15-20:30 | | |

Autoimmunity Congress Asia, Singapore, November 17-19, 2011

| Friday, November 18, 2011 | | | |
|---------------------------|--|-------------|--|
| | HALL A | | HALL B |
| 08:00-10:00 | Parallel Session 1 – Diagnostics <i>Supported by an Unrestricted Educational Grant from Inova Diagnostics</i> Chairpersons: Tatsuya Atsumi, Japan Maria Laura Bertolacchini, UK | 08:00-10:00 | Parallel Session 2 - Therapy of autoimmune diseases Chairpersons: M. Eric Gershwin, USA Ho-Youn Kim, Korea |
| 08:00-08:20 | CLINICAL UTILITY OF PHOSPHATIDYLSERINE DEPENDENT ANTIPROTHROMBIN ANTIBODIES Tatsuya Atsumi, Japan | 08:00-08:20 | The Biologics: where do we go from here Stanley Naguwa, USA |
| 08:20-08:40 | ANTIPROTHROMBIN ANTIBODIES: DETECTION, IMMUNOLOGICAL CHARACTERISTICS AND CLINICAL SIGNIFICANCE Maria Laura Bertolacchini, UK | 08:20-08:30 | Effect of corticosteroid therapy on bone marrow lymphopoiesis in patients with idiopathic (immune) thrombocytopenic purpura George Shubinsky, Israel |
| 08:40-09:00 | A population study to optimize the role of serology and genetics in the diagnosis of celiac disease (CD) Jason Tye-Din, Australia | 08:30-08:40 | Aberrant expression of Mx1 in T cells from patients with systemic lupus erythematosus Shinsuke Yasuda, Japan |
| 09:00-09:20 | Recent advances in serological diagnosis of autoimmune hepatitis Ban Hock Toh, Australia | 08:40-08:50 | Engineering of recombinant anti-TNF α lactic acid bacteria for treatment of inflammatory bowel disease Borut Strukelj, Slovenia |
| 09:20-09:40 | Comparison of an automated IFA pattern recognition system on HEp-2 cells versus manual method Torsten Krieger, Germany | 08:50-09:00 | Literature review and personal experiences with biological therapies in patients with juvenile idiopathic arthritis (JIA) Emese Kiss, Hungary |
| 09:40-09:50 | Integration of accreditation needs to autoimmunity testing in core-laboratories Damien Gruson, Brussels | 09:00-09:10 | Rituximab in rheumatoid arthritis: experience in a resource-constrained setting Syed Haq, Bangladesh |
| 09:50-10:00 | Affordable microarray Elisa for autoantibody screening in connective tissue diseases Anand Kumble, New Zealand | 09:10-09:20 | Myeloid-derived suppressor cells (MDSC) for prevention and treatment of autoimmune myasthenia gravis Lina Lu, USA |
| | | 09:20-09:30 | Myeloid-derived suppressor cells |

| | | |
|-------------|---|---|
| | | (MDSC) prevent development of Experimental Autoimmune Uveitis (EAU)} |
| | | Shiguang Qian, USA |
| | 09:30-09:40 | IGG but not UGm or IGA anti-beta 2 glycoprotein antibodies associate with highest risk thrombotic events among hospital patients Anna Bruschm Australia |
| | 09:40-09:50 | The impact of allelic polymorphism in the human T cell receptor B locus on immune responses Scott Burrows, Australia |
| | 09:50-10:00 | Activated protein C increases monocytic transforming growth factor (TGF) -B1 that dampens pro-inflammatory interleukin 17 secreting CD4+ T helper cells Suat Dervish, Australia |
| 10:00-10:30 | | |
| | HALL A | |
| 10:30-12:30 | The next stage of RA management: Evidence evolved from Asia <i>Symposium supported by Mitsubishi Tanabe Pharma Corporation</i> Chairperson: Takao Koike, Japan Pao – Hsii Feng, Singapore | |
| 10:30-11:00 | New treatment target in patients with RA - Where are we and where are we going? Hisashi Yamanaka, Japan | |
| 11:00-11:30 | New approach through a beneficial tool - The application of ultrasonographic evaluation of synovium in the management of rheumatoid arthritis Kei Ikeda, Japan | |
| 11:30-12:00 | New treatment strategy for individual RA patients by "Treat-to-Target" - Best practice of infliximab learnt from the RISING study Tsutomu Takeuchi, Japan | |
| 12:00-12:30 | Next stage of RA treatment: Bio-free remission will become a possible treatment goal - RRR study update Yoshiya Tanaka, Japan | |
| 12:30-14:00 | HALL B | |
| 12:30-14:00 | Recent Progress of Autoimmune Research in Japan | |

| | |
|-------------|--|
| | Symposium sponsored by PFIZER |
| | Chairperson: <i>Takao Koike, Japan</i> <i>Hitosi Kohsaka, Japan</i> |
| 12:30-12:50 | CD4+CD25-LAG3+ regulatory T cells and autoimmunity Keishi Fujiio, Japan |
| 12:50-13:10 | Innate lymphocytes in autoimmune diseases Sachiko Mlyake, Japan |
| 13:10-13:30 | Autoimmune arthritis mediated by glycolytic enzyme -linkage between animal model and RA Isao Mtsumoto, Japan |
| 13:30-13:50 | Lessons from a new animal model of polymyositis Hitoshi Kohsaka, Japan |
| 13:50-14:00 | Discussion |

Autoimmunity Congress Asia, Singapore, November 17-19, 2011

Friday, November 18, 2011 (con't)

| | HALL A | | HALL B |
|-------------|---|-------------|---|
| 14:00-16:00 | <p>Parallel Session 3 - The mosaic of autoimmunity</p> <p><i>Supported by an Unrestricted Educational Grant from JIMRO: Japan Immunoresearch Laboratories Company Limited</i></p> <p>Chairpersons: Luc Mouthon, France Razzaque Ahmed, USA</p> | 14:00-16:00 | <p>Plenary Session 4- B Cells in Autoimmunity</p> <p><i>Supported by an Unrestricted Educational Grant from Inova Diagnostics</i></p> <p>Chairpersons: Rohini Handa, India Tom Gordon, Australia</p> |
| 14:00-14:20 | <p>AUTOIMMUNE DISEASES AS STEM CELL DISORDERS: RATIONALE FOR NORMAL STEM CELL TRANSPLANTATION FOR THEIR TREATMENT</p> <p>Susumu Ikehara, Japan</p> | 14:00-14:20 | <p>B cell directed therapies in SLE</p> <p>Sandra Navarra, Phillipines</p> |
| 14:20-14:40 | <p>Antibodies fighting antibodies</p> <p>Razzaque Ahmed, USA</p> | 14:20-14:40 | <p>Sjogren's syndrome: Recent developments and update 2011</p> <p>Rohini Handa, India</p> |
| 14:40-15:00 | <p>AUTOIMMUNITY: EVERYTHING YOU ALWAYS WANTED TO KNOW ABOUT SMELL* (*BUT WERE AFRAID TO ASK)</p> <p>Carlo Perricone, Italy</p> | 14:40-15:00 | <p>Molecular characterisation of "forbidden" clones in human systemic autoimmunity</p> <p>Tom Gordon, Australia</p> |
| 15:20-15:40 | <p>The cytokine orchestra: Is it the right target for therapy in autoimmune diseases?</p> <p>Yoga I. Kasjmir, Indonesia</p> | 15:00-15:20 | <p>Expansion and activation of self-reactive cd8+ t cells mediated by b cells</p> <p>Shane T. Grey, Australia</p> |
| 15:40-16:00 | <p>Pathophysiology of systemic sclerosis</p> <p>Luc Mouthon, France</p> | 15:20-15:40 | <p>Development and clinical trials of tolerating immunotherapy for rheumatoid arthritis.</p> <p>Ranjeny Thomas, Australia</p> |
| 16:00-16:30 | <p>Innate immune receptors in NK cells-mediated liver diseases</p> <p>Tian Zhigang, China</p> | 15:40-16:00 | <p>Epitope mapping of alpha-fodrin and its relevance to Sjogren syndrome</p> <p>Zhan-Guo Li, Beijing</p> |

Autoimmunity Congress Asia, Singapore, November 17-19, 2011

Friday, November 18, 2011 (con't)

| | | | |
|-------------|--|-------------|--|
| 16:30-18:30 | Free Communications Session I – Decade of revelations in autoimmunity Chairpersons: Chi Chiu Mok, Hong Kong Outi Vaarala, Finland | 16:30-18:30 | Free Communications Session II – Novel aspects of pathogenetic mechanisms in autoimmunity Chairpersons: Ranjeny Thomas, Australia Lai-Shan Tam, China |
| 16:30-16:50 | Autoantibodies in domestic animals – Lessons for the autoimmunologist Laurel Gershwin, USA | 16:30-16:40 | MuSK autoantibodies produce decay of the postsynaptic neuromuscular junction despite functional activation of MuSK Stephen Reddel, Australia |
| 16:50-17:10 | Pandemrix vaccination and the increase risk of narcolepsy in children Outi Vaarala, Finland | 16:40-16:50 | The Expression of adhesion molecules (ICAM-1, VCAM-1 and L- selectin) on synovial tissue of collagen-induced arthritis (CIA) rats Eryati Darwin, Indonesia |
| 17:10-17:20 | The comparison of native and modified Sm peptides and their use in the diagnosis of SLE Renfen Chen, Australia | 16:50-17:00 | Pre-natal methyl-donor dietary supplementation impacts murine autoimmunity Raymond Yung, USA |
| 17:20-17:30 | Antibiotic prophylaxis for post- streptococcal vasculitis: experience in 5 filipino patients Jennifer Melanie Payle, Phillippines | 17:00-17:10 | The Influence of enzyme matrix metalloproteinase-9 in the pathogenesis of atherosclerosis Ines Mrakovcic-Sutic, Croatia |
| 17:30-17:40 | GITRL exacerbates collagen-induced arthritis <i>via</i> enhancing Th17 cells response Shengjun Wang, China | 17:10-17:20 | Histone deacetylase inhibition orchestrates enhanced cancer immunotherapy while abrogating autoimmune sequelae Yonghong Wan, Canada |
| 17:40-17:50 | The role of toll like receptors in the clearance of apoptotic cells by macrophages Teja Celhar Kenanova, Singapore | 17:20-17:30 | Altered expression of TPP1 and POT1 in Fibroblast-like synovial cells might be involved in the pathogenesis of rheumatoid arthritis Yu-Feng Qing, China |
| 17:50-18:00 | CD1B-transgenic mice to study glycolipid-specific immune responses in EAE Lucia Mori, Singapore | 17:30-17:40 | The novel proinflammatory cytokine soluble EMMPRIN ligand/interleukin-39 (IL39) stimulates MCSF-1 differentiated |
| 18:00-18:10 | Uric acid crystals promote Th17 cell differentiation through an IL-1- and IL-18-dependent mechanism Alessandra Mortellaro, Singapore | | |
| 18:10-18:20 | GPR18 and its role in MOG-induced experimental autoimmune | | |

At

18:20-18:30

encephalomyelitis
Doris Shim, Australia

Increased interferon-alpha levels in primary sjögren's syndrome: frequency and relationship with pro-inflammatory cytokines, clinical features and anti-Ro/La response
Johannes Nossent, Norway

17:40-17:50

human macrophages (Mφ) to produce TNFα, IL1β, and IL32γ
Carl Edwards III, China

T-cell-specific deletion of EFNB1 and EFNB2 results in compromised EAE
Hongyu Luo, Canada

17:50-18:00

IGG but not IGM or IGA anti-bets 2 glycoprotein I antibodies associate with highest risk thrombotic events among hospital patients
Anna Brusch, Australia

18:00-18:10

The role of apoptotic proteins in patients with systemic lupus erythematosus
Faris Alenzi, Sauda Arabia

18:10-18:20

Evaluation of serum Endothelin-1 in children with Henoch-Schonlein purpura
Reza Shiari, Iran

18:20-18:30

Evidence for shared reactivity between bacteria and spermatozoa
Vijay Prabha, India

Autoimmunity Congress Asia, Singapore, November 17-19, 2011

| Saturday, November 19, 2011 | | | |
|-----------------------------|--|-------------|--|
| | HALL A | | HALL B |
| 08:00-10:00 | Parallel Session 5 – Novel pathways in autoimmune diseases Chairpersons: Bambang Setyohadi, Indonesia Tian ZhiGang, China | 08:00-10:00 | Parallel Session 6 – Autoimmunity: Pathogenetic mechanisms Chairpersons: Shunle Chen, China Sandra Navarra, Phillipines |
| 08:00-08:10 | The atypical chemokine receptor CCX-CKR regulates thymocyte development and autoimmunity Shaun McColl, Australia | 08:00-08:20 | Antiphospholipid syndrome: pathogenesis and genetics Takao Koike, Japan |
| 08:10-08:20 | IL1 Receptor Antagonist (IL1RA) VNTR polymorphism confers susceptibility to SLE in South Indian Tamil population Devaraju Panneer, India | 08:20-08:40 | Neuropsychiatric lupus syndromes - pathogenesis Kok-Yong Fong, Singapore |
| 08:20-08:30 | TLR9-independent interferon- α production by neutrophils in response to a major lupus autoantigen Patrice Decker, France | 08:40-09:00 | Pregnancy & autoimmunity Caterina De Carolis, Italy |
| 08:30-08:40 | Determining the necessity of TLR7 in the progression of systemic lupus erythematosus (SLE) Raquel de Magalhaes, Singapore | 09:00-09:20 | Synovial immunopathologic study in ankylosing spondylitis and other rheumatic diseases Chung-Tei Chou, Taiwan |
| 08:40-08:50 | Cytoprotective activity of berberis hispanica: efficacy and synergistic potential with chemotherapy Houda Benboubker, France | 09:20-09:40 | SOCS1 controls the pathogenicity of potentially autoreactive CD8+ T cells by regulating cytokine-driven proliferation and differentiation Subburaj Ilangumaran, Canada |
| 08:50-09:00 | Increased expression of mGITRL on D2SC/1 cells by particulate β -glucan regulates CD4+ Teff and Treg cells Shengiun Wang, China | 09:40-09:50 | C1Q regulation of dendritic cell development from monocytes with distinct cytokine production and T cell stimulation |
| 09:00-09:10 | Anti-proliferative, cytotoxic and apoptogenic with immunomodulatory activity of resin extract of Shorea Robusta (Diterocarpaceae) Shila Besra, India | 09:50-10:00 | |
| 09:10-09:20 | An immunologist and bioethicist diagnosed with breast cancer- a message | | |

A

Ida Gubert, Brazil

09:20-09:30

The role of labile zinc levels in systemic autoimmune disease

Johannes Nossent, Norway

09:30-09:40

Induction of autoimmune hepatitis paradoxically reduce the rejection after liver transplantation in rats

Shigeru Goto, Taiwan R.O.C.

09:40-09:50

Interleukin-17A and interleukin-17F mRNA expressions in patients with multiple sclerosis

Zohreh Babaloo, Iran

09:50-10:00

Effect of tamoxifen therapy on blood levels of anti nuclear antibodies

Mohammed Ahamed, Sudan

10:00-10:30

| | | |
|-------------|--|---|
| | 12:00-12:10 | shoulder hemiarthroplasty Jasvinder Singh, USA |
| | 12:10-12:20 | Leishmani donovani: an <i>in vitro</i> study of antimony-resistant amphotericin B-sensitive isolates Abdalia Sharief, Sudan |
| | 12:20-12:30 | Relationship of hormonal factors with disease activity in systemic lupuserythematosus: a meta-analysis Ramon Miguel Molina, Philippines |
| | HALL B | |
| 12:30-14:00 | ASIA REACH – Rheumatology Expert Advisory Council for Health Meeting Symposium sponsored by PFIZER PTE LTD Chairperson: Pao-Hsii Feng, Singapore | |
| 12:30-12:35 | Introduction of speakers Pao-Hsii Feng, Singapore | |
| 12:35-13:05 | Review of latest global data on immunogenicity in biologics Chen Jiunn-Hong, Taiwan | |
| 13:05-13:15 | Q&A Pao-Hsii Feng, Singapore | |
| 13:15-13:45 | Emerging evidence in Asia on the immunogenicity of biologics and their clinical implications Hisashi Yamanaka, Japan | |
| 13:45-13:55 | Q&A Pao-Hsii Feng, Singapore | |
| 13:55-14:00 | Closing remarks Pao-Hsii Feng, Singapore | |

Autoimmunity Congress Asia, Singapore, November 17-19, 2011

| | | |
|-------------------------------------|--|--|
| Saturday, November 19, 2011 (con't) | | |
|-------------------------------------|--|--|

HALL A

12:30-14:00

Symposium sponsored by PFIZER PTE LTD

Chairperson:

Autoimmunity Congress Asia, Singapore, November 17-19, 2011

| Saturday, November 19, 2011 (con't) | | | |
|-------------------------------------|--|-------------|---|
| | HALL A | | HALL B |
| 14:00-16:00 | Plenary Session 9 – Vitamin D, innate immunity and autoimmune diseases <i>Supported by an Unrestricted Educational Grant from Autoimmunity Research Foundation</i> Chairpersons: Carlos Dias, Portugal Carlo Perricone, Italy | 14:00-16:00 | Parallel Session 10 – Autoantibodies and genetics of autoimmune diseases <i>Supported by an Unrestricted Educational Grant from Inova Diagnostics</i> Chairpersons: Roberto Perricone, Italy Stanley Naguwa, USA |
| 14:00-14:20 | Why vitamin D is more effective in early stage disease than in late-stage disease Trevor Marshall, Australia | 14:00-14:20 | New insights on oxidative inflammation in autoimmune-mediated atherosclerosis Eiji Matsuura, Japan |
| 14:20-14:40 | Vitamin D and clinical correlations in 500 autoimmune Portuguese patients Carlos Dias, Portugal | 14:20-14:30 | Anti-C1Q antibody is a valuable biological marker for prediction of renal pathological characteristics in lupus nephritis Zhu Chen, China |
| 14:40-15:00 | Vitamin D, disease activity and vascular health in SLE Chi Chiu Mok, Hong Kong | 14:30-14:40 | Similarity and dissimilarity of genetic susceptibility of primary biliary cirrhosis between Japanese and Caucasian Atsushi Tanaka, Japan |
| 15:00-15:20 | Redefining psychiatric and neurologic comorbidities as systemic dysfunction Roswitha Goetze-Pelka, UK | 14:40-14:50 | Immunogenetics of gluten sensitivity in rhesus macaques: A celiac disease model Karol Sestak, USA |
| 15:20-15:40 | Innate immunity and autoimmune diseases Vera Chan, Hong Kong | 14:50-15:00 | Newly developed test for calprotectin on an automated system Wolfgang Papisch, Germany |
| 15:40-15:50 | Association between serum vitamin D (25(OH)D3 levels with clinical lupus nephritis Cesarius Singgih Wahono, Indonesia | 15:00-15:10 | Aortic aneurysm, polyarteritis nodosa, and Klinefelter's syndrome Mary Ondinee Manalo, Philippines |
| 15:50-16:00 | Vitamin D3 treated dendritic cells as tolerogenic DCs: their use in EAE prophylaxis S.M. Moazzeni, Iran | 15:10-15:20 | Immunogenetics study of ankylosing spondylitis in Moroccan population Imane el Mouraghi, Morocco |

Autoimmunity Congress Asia, Singapore, November 17-19, 2011

Saturday, November 19, 2011 (con't)

| | HALL A | | HALL B |
|-------------|--------|-------------|---|
| | | 15:20-15:30 | Epitopes of peroxynitrite-modified H2A histone are better substrate than H3 modified histones for SLE autoantibodies binding Mohammad Khan, India |
| | | 15:30-15:40 | The profile of ANA immunofluorescence (ANA-IF) in prodia national reference laboratory (PNRL), Indonesia Yenny Surjawan, Indonesia |
| 16:00-16:30 | | 15:40-16:00 | Discussion |

Autoimmunity Congress Asia, Singapore, November 17-19, 2011

Saturday, November 19, 2011 (con't)

HALL A

- | | |
|-------------|--|
| 16:30-18:30 | Plenary Session 2 – Pearls and novel therapy, Treg cells and autoimmunity Chairpersons: Chung-Tei Chou, Taiwan Yogi I. Kasjmir, Indonesia |
| 16:30-16:50 | The puzzle of CNS involvement in lupus Carlos Vasconcelos, Portugal |
| 16:50-17:10 | Premature atherosclerosis for rheumatic diseases Lai Shan Tam, China |
| 17:10-17:20 | Ontogenic detention in Foxp3+ thymocyte-development causes autoimmune gastritis in CD3 ζ -deficient mice Shuji Akizuki, Japan |
| 17:20-17:30 | Spleen Treg cells and splenocytes proliferation changes in experimental autoimmune encephalomyelitis in C57BL/6 ovariectomized estrogen treated mice Mahmoud Mahmoudi, Iran |
| 17:30-17:40 | Representation and functional interaction of effector and regulatory T cells: Impact on the local immune response in rheumatoid arthritis Dipendra Mitra, India⁷⁶ |
| 17:40-17:50 | Treatment of dexamethasone ameliorates Imiquimod-induced psoriasis in mice Shailesh Dudhgaonkar, India |
| 17:50-18:00 | Secondary Sjogren's syndrome in female , immunological and hormonal study Basma Al-Ahmed, Malaysia |
| 18:00-18:10 | Effect of gonadotropin on systemic autoimmune responses Alpana Satsangi, India |
| 18:10-18:30 | The development of innovative targeted therapies with special attention to monoclonal antibodies Emese Kiss, Hungary |