

# Evaluation of concretization of local road in Padang city using the importance satisfaction analysis and customer satisfaction index methods

Yosritzal<sup>1\*</sup>, Elsa Nofriyanti<sup>2</sup>, and Yossyafra<sup>1</sup>

<sup>1</sup>Senior Lecturer, Andalas University, Limau Manis, Padang, 25163, Indonesia

<sup>2</sup> Postgraduate Student, Andalas University, LimauManis, Padang, 25163, Indonesia

**Abstract.** A road is the most critical infrastructure in economic development; therefore, it should be maintained at a certain level of service. In improving road quality, the satisfaction of road users can also be used as a reference to determine whether the road is still in good condition or if handling is needed to improve the comfort of the road users. This study aims to map the attributes that affect the satisfaction of local road users using the Importance Satisfaction Analysis and Customer Satisfaction Index methods, identify the main priority attributes that need to be improved, and assess the impact of concretization according to the community perceptions. The study found that road supporting facilities (road shoulder, drainage), the width of the road, smooth flow in and out of the road, prevention of stagnant water during the rainy season are the most priority attributes to be improved. The satisfaction index value is 67.22%, suggesting that overall, road users are satisfied with the existence of local road concretization in the city of Padang.

## 1 Introduction

The Major of Padang City has an excellent program in improving public needs, especially in residential areas. Public Works and Public Housing Agency has been instructed by the Major to evenly improve local roads in almost every residential and residential area that are densely populated by using road concrete programs since 2013. Ready Mix Concrete is chosen to pave the local road because the process is quite easy and can be done without heavy equipment compared to by using asphalt roads.

The rigid pavement is a road pavement with binding materials using Portland cement, reinforced concrete plates, or without reinforcement placed on the subgrade or without the bottom layer [3]. These concrete plates carry most of the traffic load. The advantages of cement concrete Pavement are: it is suitable for heavy traffic, more resistant to hot weather, and resistant to the influence of water. For local road/ concrete at residential area, rebate casting uses a K-225 concrete quality without reinforcement with a thickness of 15 cm.

According to (Director General of Highways, 2013), rigid Pavement can be a cheaper option for urban roads with limited access to very heavy vehicles. If the workspace is limited, the implementation of rigid pavement will be easier and faster to do than flexible pavement. From several

opinions regarding rigid pavement (concrete), it can be concluded that road concretisation has advantages and disadvantages. However, concrete road pavement carried out on local urban roads is more effective and easier to work when it is compared to used asphalt. It is because housing/ local roads are generally narrow.

The local road concretisation aims to improve the quality and to increase the number of steady and durable roads in the residential in the context of regional development and fulfilling community needs. The question is, does the program has to satisfy the community needs? Are they (the community) happy with the road concretisation? Furthermore, will the concretisation trigger any disaster in the future, such as flooding or increasing the number of traffic accidents? These questions are important to evaluate the program. As far as the authors' knowledge, no study has been conducted to evaluate the satisfaction of the community regarding the concretisation, even though the program has been carried out since 2013. Therefore, authors are motivated to examine the essential attributes that significantly affect the satisfaction of users of concrete rebate roads and know the level of community satisfaction with the local road concretisation.

The objective of this study are: to map the attributes that affect user satisfaction based on the

<sup>1</sup> Corresponding author: [yosritzal@eng.unand.ac.id](mailto:yosritzal@eng.unand.ac.id)

level of importance of the attributes as well as the level of community satisfaction with the Importance Satisfaction Analysis (ISA) method and the Customer Satisfaction Index (CSI); to know what attributes still need to be improved, so that the users' satisfaction of the community of road concrete users become higher; and to identify the impact of concretization according to community's perceptions. The object of the study was the residents who were living in the residential areas in the city of Padang, which received the road concretisation program between 2013 to 2017.

The attributes which expected to affect the satisfaction of the community were divided into four groups, including product (product), place/ location (place), process (process), and physical evidence (physical evidence). The attributes were examined to obtain the most important variables that affect peoples' satisfaction so that the authority could improve those variables. The Importance of Satisfaction Analysis (ISA) was used in this study to map the attributes and to spot the most important variables that should be maintained to enhance public satisfaction.

According to [6] Yosritzal et al., the Importance of Satisfaction Analysis (ISA) method is one of the evaluation tools in determining priorities for handling service attributes to improve customer satisfaction. The Importance Satisfaction Analysis (ISA) method is the extension of the Importance-Performance Analysis (IPA) method that is firstly introduced by Martilla and James (1977). The superiority of this ISA method can provide information items that needed to be improved for the users' satisfaction progress. The results are relatively easy to interpret. The scale is relatively easy to understand and to use, and the cost is relatively low.

Besides using the ISA method, this research also uses the Customer Satisfaction Index (CSI) method to determine the level of satisfaction of the user to the road concretisation as a whole. According to (Anggraini, 2015), the Customer Satisfaction Index (CSI) method is taken to determine the level of overall user satisfaction by looking at the importance of the attributes. The advantages of this CSI method include efficiency, easy to use, and straightforward. Also, it uses a scale that has a high enough sensitivity where users' satisfaction is determined by the user's perception toward product satisfaction for filling the expectations.

## 2 Material and methods

This research began with a preliminary survey to determine the concrete road conditions in the city of Padang and followed by several in-depth interviews to identify variables that affect the road user satisfaction. Secondary data about the road that had been paved with a concrete slab between 2013 to 2017 was collected from the Department of Housing

and Settlements of the City of Padang Housing Area. The data was used to identify the samples. Primary data collection was carried out by distributing questionnaires to the residents who live and use the road before and after the concretisation work is done. The examined attributes used in this study are product, place, process, and physical evidence, which extracted, as shown in **Table 1**.

**Table 1.** Measurement Variables and Attributes

No.	DIMENSION (Attributes)	VARIABLE
1	<i>Product</i>	<ul style="list-style-type: none"> <li>▪ The thickness of the pavement layer</li> <li>▪ Quality of Road</li> <li>▪ Road accessibility</li> <li>▪ Supporting facilities and infrastructure (road shoulder, drainage)</li> </ul>
2	<i>Place</i>	<ul style="list-style-type: none"> <li>▪ Road width</li> <li>▪ Ease of location</li> <li>▪ The capacity of the road that is passed by the top-clock vehicle</li> </ul>
3	<i>Process</i>	<ul style="list-style-type: none"> <li>▪ The road casting with ready mix truck</li> <li>▪ The presence or absence of road closure when casting road</li> </ul>
4	<i>physical Evidence</i>	<ul style="list-style-type: none"> <li>▪ Driving comfort (<i>rutting</i>)</li> <li>▪ Road Safety (Road Hump)</li> <li>▪ Vehicle noise</li> <li>▪ Maintenance of concrete (28 days line closure)</li> <li>▪ Impact on vehicle wheels</li> <li>▪ The smoothness of road for vehicles in and out of the residence (when it disputes)</li> <li>▪ Impact during the rainy season</li> <li>▪ Impact during the dry season</li> </ul>

There are 220 road concrete work packages done between 2013 to 2017. Twenty roads were randomly chosen as the sample for this study. Field observations were conducted to see the road conditions, road width, the thickness of castings, and road support. Then the questionnaire survey was carried out. Based on the Slovin equation, the number of samples for this study was 203 respondents.

The data were analysed using the Importance Satisfaction Analysis (ISA) method and the Customer Satisfaction Index (CSI). The first stages of data analysis using ISA are to determine the level

of suitability between the level of importance and the level of satisfaction of the attributes studied from the comparison of interest scores and satisfaction. The formula to check the suitability is shown in eq. 1

$$Tki = \frac{Xi}{Yi} \times 100\% \dots\dots\dots(1)$$

Where :  
 Tki is The level of compatibility of the Respondent-  
 I; Xi is Performance Level Assessment  
 (Satisfaction) Score; Yi is Road Concrete User  
 Rating Score

The second stage is to calculate the average of each attribute with the eq. 2.

$$X = \frac{\sum Xi}{n} \text{ and } Y = \frac{\sum Yi}{n} \dots\dots\dots(2)$$

Where :  
 X is Average Level of Satisfaction Assessment of  
 attribute i; Y is Average Interest Rate Assessment of  
 attribute i; n is Number of Data

Average (or median) Satisfaction Level

Importance Level (Y)	High	High	High
	Main priority	Quadrant A	Quadrant B
	Low	Good performance, Defend it!	High
	Low	Quadrant C	Quadrant D
	Low	Low Priority	Overdone
		Low	Satisfaction Level (X)

**Fig.1** Importance Satisfaction Analysis Matrix  
 (Graf et al., 1992)

The third stage is to calculate the average of each attribute of importance (Y) and Satisfaction (X), which will be used as the boundary in the Cartesian diagram with the eq. 3.

$$\bar{X} = \frac{\sum Xi}{K} \text{ and } \bar{Y} = \frac{\sum Yi}{K} \dots\dots\dots(3)$$

Where:  
 X is Total Attribute Satisfaction Level of attribute i;  
 Y is Total Attribute Average Interest of attribute i;  
 K is Number of Questions Listed in the  
 Questionnaire

The final stage of the ISA is the elaboration of each attribute in the Cartesian diagram, as shown in Fig 1.

After the ISA, the CSI was conducted. There are four steps in determining the customer satisfaction index, such as: determining mean importance score, establishing weight factor, determining to mean satisfaction score, and establishing.

Firstly, determining the Mean Importance Score (MIS) using eq. 4.

$$MIS_i = \frac{\sum_{i=1}^n Yi}{n} \times 100 \% \dots\dots\dots(4)$$

Where:  
 n is Number of Data; Yi is The importance value of the i-j attribute (which has been converted on a predetermined scale)  
 Secondly, establishing Weight Factor (WF) namely, weighted factors per attribute using eq.

$$WF_i = \frac{MIS_i}{EMIS} \times 100 \% \dots\dots\dots(5)$$

Where:  
 MIS<sub>i</sub> is MIS i-j attribute; MIS is The total number of MIS attributes  
 Thirdly, determining Mean Satisfaction Score (MSS) using eq. 6.

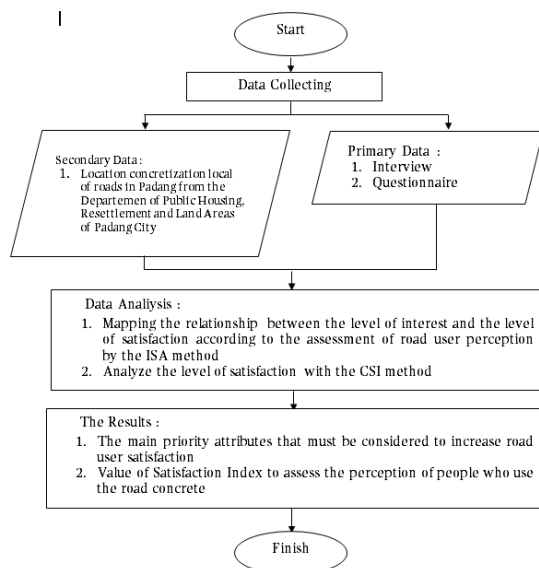
$$MSS = \frac{\sum_{i=1}^n Xi}{n} \times 100 \% \dots\dots\dots(6)$$

Where:  
 n is Number of data; Xi is The performance value of the i-j attribute (which has been converted on a predetermined scale)

Finally, establishing Weight Score (WS), which is the multiplication between WF and MSS. Then specify CSI using eq. 7.

$$CSI = \frac{\sum_{i=1}^n WS_i}{HS} \times 100 \% \dots\dots\dots(7)$$

The methodological framework of this study can be seen in Fig.2.



**Fig.2** Methodological Framework

### 3 Result and discussion

Based on the field observation, it was found that the road sections vary in terms of the length and the width of the road section, the thickness of the pavement, and the presence of road shoulders. Therefore, the number of respondents is set to be proportionally distributed based on the length of the road sections. The list of the 20 road sections used as the samples and number of respondents for each section can be seen in Table 2.

Typical feature of the local road after concretisation program is in fig 3.



**Fig.3.** Manggis Street at Belimbing, Kuranji

**Table 2.** List of the Studied Road Sections

No.	Concrete Road Section	Road length	respondents
1	Local Road at RT.05/RW.01 Baring Indah III	737 m	5
2	Local Road at RT.04/RW.IV Ulak Karang Utara.	138 m	5
3	Jihad street at Kubu Dalam Parak Karakah	210 m	5
4	Local Road at RT.02/RW.06 Geri Permai Residence	226 m	5
5	Atlas II street at Ulak Karang	428 m	5
6	Local Road at RT.05/RW.03 Dadok Tunggul Hitam.	1.135 m	6
7	Local Road at Mutiara Putih Residence, Lubuk Gading Permai III Residence, Puri Lestari, Padang Sarai Permai Residence, Monang Indah Residence, Lubuk Sejahtera Lestari Residence.	6.644 m	48
8	Palembang Street at Ulak Karang Utara	502 m	5
9	Local Road at Mega Permai Residence.	1.286 m	20
10	Manggis street at RW 10, Kuranji	238 m	8
11	Local Road at Singgalang Residence, Batang Kabung	546 m	10
12	Local Road at Wisma indah IV Siteba, Pasir Putih Residence Tabing, Maransi, Pemda Sungai Lareh Residence	1.642 m	25
13	Local Road at RW. XIV Filano, Kubu Dalam Parak Karakah	226 m	7
14	Local Road at RT. 01/RW. 17, Anak Aie Koto Tengah	116 m	5
15	Banda Aceh Street at Ulak Karang	139 m	6
16	Local Road at Wisma Indah VII-Jundul IV Parupuk Tabing	351,1 m	8
17	Delima V street, RT. 005/RW.008 Belimbing, Kuranji	742 m	10
18	Local Road at Andalas and Parak Kopi	1.228 m	10
19	Local Road at Komplek Cendana Parupuk Tabing	570 m	5
20	Local Road behind PGSD, Lubuk Buaya	440 m	5
	Total		203

The level of conformity is the result of the comparison between the value of the level of satisfaction with the level of importance. Eq. 1 was used to calculate the level of conformity, and the level of suitability was used to see the ranking or ranking order of the attributes from the lowest to the highest. The result is shown in Table 3.

**Table 3.** Sequence of Attributes Based on Conformity

Priority	Attribute Number	Attribute/Road Concrete Variable	Level of Conformity (%) (Tki)
1	4	Supporting facilities and infrastructure (road shoulder, drainage)	61,59
2	5	Road width	75,06
3	16	Impact during the rainy season	76,02
4	2	Quality of Road	79,42
5	1	The thickness of the pavement layer	83,55
6	3	Road accessibility	83,92
7	7	Volume-Capacity Ratio at the peak hour.	84,12
8	15	Smooth flow of vehicles in and out of the residential	84,22
9	6	Accessibility of the location	85,65
10	9	The road was closed during the concretisation work was running.	88,55
11	17	Prevention and reduction of dust during the dry season	88,63
12	8	Ready-mix concrete was used for the pavement	89,71
13	11	Installation of sleeping police to reduce vehicle speed	94,24
14	10	The surface of the pavement was rutted with a wire comb	94,64
15	12	Reduction of noise pollution	95,50
16	13	Roads were closed for 28 days during the concrete maintenance	96,24
17	14	Effect of the road pavement conditions toward tire wear (wheels)	96,75

In order to categorise the index level of satisfaction in the CSI, similar categorisation found in Syukri (2014) was used. The categorisation divides the CSI criteria based on the level of conformity, as shown in Table 4.

**Table 4** Customer Satisfaction Index Interpretation

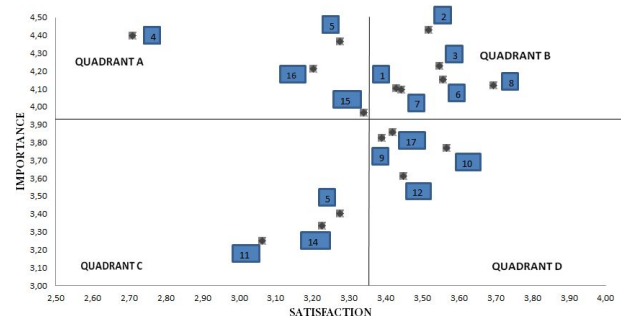
Index level	Interpretation
$x \leq 64\%$	Very poor
$64\% < x \leq 71\%$	Poor
$71\% < x \leq 77\%$	Cause for concern
$77\% < x \leq 80\%$	Borderline
$80\% < x \leq 84\%$	Good
$84\% < x \leq 87\%$	Very good
$87\% < x$	excellent

Source: Syukri (2014)

Table 4 shows the level of suitability between the level of importance and the level of satisfaction in the attributes/variables of road concrete. The level of conformity shows the order of priority from the lowest to the highest as an effort to improve or repair the quality of the concrete road in the future by the related agency.

The data collected from the questionnaire were analysed using the Importance Satisfaction Analysis (ISA). Average Score of the Importance and the Satisfaction Level of Attributes of the Road Concrete seen in Table 5.

When the data were plotted to the Cartesian diagram of the ISA, the data spread in the four quadrants, as shown in Fig.4.



**Fig.4** Plotted Data in a Diagram Cartesian

From the Cartesian diagram, it appears that the attributes are grouped into four quadrants as follows:  
 1. Quadrant A (*Main priority*)

The attributes include in this quadrant are attributes that are considered important, but the implementation has not been in line with the expectations. The attributes that exist are as follow:

- Supporting facilities and infrastructure (road shoulder, drainage) (4)
- Road width (5)
- Smooth flow of vehicles in and out of the residential (15)
- Impact during the rainy season (16)

**Table 5** Average Level of the Importance and the Satisfaction of the Road Concrete Attributes

No	Attribute/ Road Concrete Variable	Level of Importance (Y)	Level of Satisfaction (X)
1	Thickness of the pavement layer	4,10	3,43
2	Quality of Road	4,43	3,52
3	Road accessibility	4,23	3,55
4	Supporting facilities and infrastructure (road shoulder, drainage)	4,40	2,71
5	Road width	4,36	3,28
6	Accessibility of the location	4,15	3,56
7	Volume-Capacity Ratio at the peak hour.	4,09	3,44
8	Ready-mix concrete was used for the pavement	4,12	3,69
9	The road was closed during the concretisation work was running.	3,83	3,39
10	The surface of the pavement was rutted with a wire comb	3,77	3,57
11	Installation of a speed bump to reduce vehicle speed	3,25	3,06
12	Reduction of noise pollution	3,61	3,45
13	Roads were closed for 28 days during the concrete maintenance	3,40	3,28
14	Effect of the road pavement conditions toward tire wear (wheels)	3,33	3,23
15	Smooth flow of vehicles in and out of the residential	3,97	3,34
16	Impact during the rainy season	4,21	3,20
17	Prevention and reduction of dust during the dry season	3,86	3,42
<b>Total</b>		<b>67,12</b>	<b>57,10</b>
<b>Average (X,Y)</b>		<b>3,95</b>	<b>3,36</b>

**2. Quadrant B (Maintain Performance)**

The attributes included in this quadrant are attributes that are considered important by the respondent, and the performance/ satisfaction of the user is considered to be high. The attributes are:

- The thickness of the pavement layer (1)
- Quality of Road (2)
- Road accessibility (3)
- Accessibility of location (6)
- Volume-Capacity Ratio of the road at peak hour (7)
- Ready-mix concrete was used for the pavement (8)

**Table 6** Calculation Customer Satisfaction Index (CSI)

No	Level Average Interests (MIS)	Importance Weigh Factor (WF)(%)	Level Average Satisfaction (MSS)	Weight Score (WS)
1	4,10	6,11	3,43	20,96
2	4,43	6,60	3,52	23,21
3	4,23	6,30	3,55	22,34
4	4,40	6,55	2,71	17,76
5	4,36	6,50	3,28	21,30
6	4,15	6,19	3,56	22,01
7	4,09	6,10	3,44	21,00
8	4,12	6,14	3,69	22,67
9	3,83	5,70	3,39	19,33
10	3,77	5,61	3,57	20,02
11	3,25	4,84	3,06	14,84
12	3,61	5,38	3,45	18,55
13	3,40	5,07	3,28	16,61
14	3,33	4,97	3,23	16,03
15	3,97	5,91	3,34	19,73
16	4,21	6,28	3,20	20,09
17	3,86	5,75	3,42	19,65
<b>Tot</b>	<b>67,12</b>	<b>100</b>		
<b>Weighted Total</b>				<b>336,10</b>
<b>Customer Satisfaction Index (CSI)</b>				<b>67,22</b>

### 3. Quadrant C (Low priority)

The attributes that are included in this C quadrant are attributes which considered as less important and also has less value of satisfaction. The attributes are:

- Installation of a speed bump to reduce vehicle speed (11)
- Roads were closed for 28 days during the concrete maintenance (13)
- Effect of the road pavement conditions toward tire wear (wheels) (14)

### 4. Quadrant D (Tends to be excessive)

The attributes include in D quadrant are attributes considered less important by road users, but the attributes are considered and implemented properly. The attributes included in this quadrant are:

- The road was closed during the concretisation work was running. (9)
- The surface of the pavement was rutted with a wire comb (10)
- Reduction of noise pollution (12)
- Prevention and reduction of dust during the dry season (17)

Finally, the data were analysed using the Customer Satisfaction Index (CSI) method to determine the level of satisfaction of the user to the road concretisation as a whole. The results are shown in Table 6.

It can be seen that the road user satisfaction index value is 67.22%, which means that the road user satisfaction level is in the range 0.66 - 0.80 or categorised as "satisfied" with the local road concretisation performance.

## 4 Conclusion

An exploration of the respondents' perception of the importance of the attributes of local road concretisation performance in Padang and how they satisfy the users has been conducted. The results show the attributes could be mapped in 4 quadrants, namely top priority, maintain performance, low priority, and tends to overdo.

1. Top Priority is an attribute that is considered important by concrete road users, but the implementation is not in line with the expectations. Furthermore, it is a top priority that needs to be considered and improved by the relevant agencies. These attributes include supporting facilities and infrastructure (road shoulder, drainage), road width, smooth flow of vehicles in and out of the residential, and lastly, the impact during the rainy season.
2. Maintain Performance is an attribute that has a relatively high level of importance with a relatively high level of user satisfaction so that managers need to maintain their performance. Attributes in the quadrant maintain this performance included: the thickness of the

pavement layer, quality of the road, road accessibility, ease of location, the volume-capacity ratio at the peak, and the use of ready mix concrete for the pavement.

3. Low Priority is an attribute with a level of user satisfaction that is relatively below the average value of satisfaction, and the level of importance is also relatively lower than the average level of interest of the respondents. So, the priority is low. Attributes categorised into this quadrant include: installation of a speed bump to reduce vehicle speed, roads are closed 28 days for road treatment and maintenance, road pavement conditions against tire wear (wheels).
4. It tends to overdo. It is an attribute that the importance level is relatively low from the average level of importance of use and perceived by the user too excessive than relatively high level of satisfaction. Attributes that enter in this quadrant include: The road was closed during the concretisation work was running, the surface of the pavement was rutted with a wire comb, reduction of noise pollution, and prevention and reduction of dust during the dry season.

The calculation results using the Customer Satisfaction Index (CSI) method, it is obtained that the value of the respondents' satisfaction index is 67.22%, which means that overall the community feels "satisfied" with the road concretisation.

The publication of this article was funded by the Engineering Faculty of Andalas University Grant under contract no. 009/UN.16.09.D/PL/2019.

## Reference

1. Anggraini, L.D., Deoranto, P., Ikasari, D.M. (2015). *J.Industri* **4**(2): 74-81. Malang : Universitas Brawijaya
2. Direktorat Jenderal Bina Marga.(1997). *Manual Kapasitas Jalan Indonesia (MKJI)* (Indonesian Highway Capacity Manual). Direktorat Jendral Bina Marga.
3. Hadi, D., Adji, B.M., Yosritzal. (2017). *Proceeding of 4th Andalas Civil Engineering (ACE) Conference 2017, 9 November 2017*, Universitas Andalas, Padang. Jurusan Teknik Sipil Unand, 419-430
4. Istijono, B., Adji, B.M., Ophiyandri, T., Satrios, J., and Yosritzal. 2016. *Int.J of Earth Sci Engg* **09** (03) ISSN 0974-5904. 229-234.
5. Martilla, J. A. and James, J. C. (1977). *Importance-Performance Analysis. T. J of Marketing* **41**(1), 77-79.
6. Yosritzal, Adji, B. M., & Nofrizal, F., & Andika, R. 2014a. *Proceeding of the 1st Andalas Civil Engineering (ACE) National Conference 2014*,

27th November 2014. Andalas University,  
Padang, Indonesia.

7. Yosritzal, Dissanayake, D., & Bell, M. 2014b. The  
17th *International Symposium, Jember  
University*, August 23, (2014). Jember University,  
Jember, Indonesia.



By using this website, you agree that EDP Sciences may store web audience measurement cookies and, on some pages, cookies from social networks. [More information and setup](#)

OK

**edp sciences** Journals Books Conferences



**E3S** Web of Conferences

All issues Series  
Forthcoming About

**Q** Search **≡** Menu

[All issues](#) ▶ Volume 156 (2020)

[◀ Previous issue](#)

[Table of Contents](#)

[Next issue ▶](#)

Free Access to the whole issue

## E3S Web of Conferences

Volume 156 (2020)

### 4<sup>th</sup> International Conference on Earthquake Engineering & Disaster Mitigation (ICEEDM 2019)

Padang, West Sumatra, Indonesia, September 25-27, 2019

S.-J. Hwang, L. Comfort, I.W. Segara and A. Hakam (Eds.)

Export the citation of the selected articles [Export](#)

[Select all](#)

Open Access

Statement of Peer review

Published online: 13 March 2020

[PDF \(173 KB\)](#)

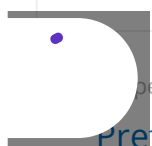
▼ Disaster

▼ Tsunami

▼ Geotechnical

▼ Structure

▼ Seismic



Open Access

**Preface** 00001

By using this website, you agree that EDP Sciences may store web audience measurement

OK

cookies and, on some pages, cookies from social networks. [More information and setup](#)

DOI: <https://doi.org/10.1051/e3sconf/20201560001>

[PDF \(928.8 KB\)](#) | [NASA ADS Abstract Service](#)

## - Disaster

Open Access

[Mitigation of the Wonorejo active fault on the Probolinggo-Banyuwangi toll road](#) 01001

Reza Kazhimi

Published online: 13 March 2020

DOI: <https://doi.org/10.1051/e3sconf/202015601001>

[PDF \(2.163 MB\)](#) | [References](#) | [NASA ADS Abstract Service](#)

Open Access

[Earthquake potential source identification using magnetotelluric data of Kendeng thrust Surabaya area](#) 01002

Amien Widodo, Firman Syaifuddin, Wien Lestari and Dwa Desa Warnana

Published online: 13 March 2020

DOI: <https://doi.org/10.1051/e3sconf/202015601002>

[PDF \(2.341 MB\)](#) | [References](#) | [NASA ADS Abstract Service](#)

Open Access

[Resilience measurement of Padang city's infrastructures toward multi-hazard](#) 01003

Giani Ananda, Taufika Ophiyandri and Edi Hasymi

Published online: 13 March 2020

DOI: <https://doi.org/10.1051/e3sconf/202015601003>

[PDF \(1.689 MB\)](#) | [References](#) | [NASA ADS Abstract Service](#)

Open Access

[Identification of liquefaction disaster in Jondul Rawang, Padang City West Sumatra](#) 01004

Utami Dewi Arman, Rafki Imani, Afrilda Sari and Widiawati Purba

Published online: 13 March 2020

DOI: <https://doi.org/10.1051/e3sconf/202015601004>

[PDF \(1.759 MB\)](#) | [References](#) | [NASA ADS Abstract Service](#)

Open Access

[Mapping the river drought-indices in west Sumatra](#) 01005

As Mera, Afdhal Amri, Novita Sari Yelni and Feska Ostari

Published online: 13 March 2020

By using this website, you agree that EDP Sciences may store web audience measurement cookies and, on some pages, cookies from social networks. [More information and setup](#)

OK

 Open Access

### [Mitigation through seepage reduction in dams](#) 01006

Novy Haryati and Abdul Hakam

Published online: 13 March 2020

DOI: <https://doi.org/10.1051/e3sconf/202015601006>

[PDF \(1.892 MB\)](#) | [References](#) | [NASA ADS Abstract Service](#)

 Open Access

### [Coastal disaster mitigation through shoreline changes analysis in Pariaman city](#) 01007

Azria Paldi Donal and Andriani

Published online: 13 March 2020

DOI: <https://doi.org/10.1051/e3sconf/202015601007>

[PDF \(4.990 MB\)](#) | [References](#) | [NASA ADS Abstract Service](#)

 Open Access

### [Prediction of a design flood-discharge that caused sedimentation in the river mouth of Batang Anai](#) 01008

Mas Mera and Hendra Yuldi

Published online: 13 March 2020

DOI: <https://doi.org/10.1051/e3sconf/202015601008>

[PDF \(5.724 MB\)](#) | [References](#) | [NASA ADS Abstract Service](#)

 Open Access

### [Evaluation of resilient modulus and unconfined compressive strength of subgrade](#) 01009

Dian Hastari Agustina and Adnan Zainorabidin

Published online: 13 March 2020

DOI: <https://doi.org/10.1051/e3sconf/202015601009>

[PDF \(1.992 MB\)](#) | [References](#) | [NASA ADS Abstract Service](#)

 Open Access

### [Disaster-based participatory development planning](#) 01010

Benny Hidayat and Anggraini Rasadi

Published online: 13 March 2020

DOI: <https://doi.org/10.1051/e3sconf/202015601010>

[PDF \(1.573 MB\)](#) | [References](#) | [NASA ADS Abstract Service](#)

By using this website, you agree that EDP Sciences may store web audience measurement

OK

cookies and, on some pages, cookies from social networks. [More information and setup](#)

## [Toward a community resilience framework for disaster risk management. a case study: landslide Cisolok in Sukabumi 2018 and Sunda strait tsunami in Pandeglang 2018](#) 01011

Osmar Shalih, Hafid Setiadi, Triarko Nurlambang and Widyawati Sumadio

Published online: 13 March 2020

DOI: <https://doi.org/10.1051/e3sconf/202015601011>

[PDF \(3.761 MB\)](#) | [References](#) | [NASA ADS Abstract Service](#)

Open Access

## [Lombok earthquake, one year later: housing sector recovery](#) 01012

Krishna S Pribadi, Rani G Pradoto, Eliya A Hanafi and I Made Adhi Bayu Rasmawan

Published online: 13 March 2020

DOI: <https://doi.org/10.1051/e3sconf/202015601012>

[PDF \(2.362 MB\)](#) | [References](#) | [NASA ADS Abstract Service](#)

Open Access

## [Rapid Screening Procedure for Buildings Damaged by Earthquakes: The Need for Retrofitting](#) 01013

Teddy Boen

Published online: 02 April 2020

DOI: <https://doi.org/10.1051/e3sconf/202015601013>

[PDF \(3.737 MB\)](#) | [References](#) | [NASA ADS Abstract Service](#)

### **- Geotechnical**

Open Access

## [Surabaya earthquake hazard soil assessment](#) 02001

Firman Syaifuddin, Amien Widodo and Dwa Desa Warnana

Published online: 13 March 2020

DOI: <https://doi.org/10.1051/e3sconf/202015602001>

[PDF \(3.641 MB\)](#) | [References](#) | [NASA ADS Abstract Service](#)

Open Access

## [Analysis of settlement prediction due to preloading and vertical drain applications on runway construction](#) 02002

Adriyati Meilani, Rifa'i Ahmad and Faris Fikri

Published online: 13 March 2020

DOI: <https://doi.org/10.1051/e3sconf/202015602002>

[PDF \(1.693 MB\)](#) | [References](#) | [NASA ADS Abstract Service](#)

Open Access

By using this website, you agree that EDP Sciences may store web audience measurement

OK

cookies and, on some pages, cookies from social networks. [More information and setup](#)

Arif Maulana, Rifa'i Ahmad and Faris Fikri

Published online: 13 March 2020

DOI: <https://doi.org/10.1051/e3sconf/202015602003>

[PDF \(2.105 MB\)](#) | [References](#) | [NASA ADS Abstract Service](#)

Open Access

[Effect of soil structure disturbance on the shear strength of black volcanic ash soil](#) 02004

Okri Asfino Putra, Noriyuki Yasufuku, Ryohei Ishikura, Ahmad Rifa'i, Adel Alowaisy and Yuko Kawaguchi

Published online: 13 March 2020

DOI: <https://doi.org/10.1051/e3sconf/202015602004>

[PDF \(2.970 MB\)](#) | [References](#) | [NASA ADS Abstract Service](#)

Open Access

[Sliding failure analysis of a gabion retaining wall at km 31+800 of Lubuk Selasih – Padang city border highway, Indonesia](#) 02005

Hanafi, Hendri Gusti Putra and Andriani

Published online: 13 March 2020

DOI: <https://doi.org/10.1051/e3sconf/202015602005>

[PDF \(2.050 MB\)](#) | [References](#) | [NASA ADS Abstract Service](#)

Open Access

[Alternative foundation for reducing building losses due to foundation failure in soft soil](#) 02006

Susy Srihandayani

Published online: 13 March 2020

DOI: <https://doi.org/10.1051/e3sconf/202015602006>

[PDF \(2.938 MB\)](#) | [References](#) | [NASA ADS Abstract Service](#)

Open Access

[Disaster mitigation in the aviation field through careful parking area planning](#) 02007

Ari Azhari

Published online: 13 March 2020

DOI: <https://doi.org/10.1051/e3sconf/202015602007>

[PDF \(1.823 MB\)](#) | [References](#) | [NASA ADS Abstract Service](#)



Open Access

[Seismic microzonation of soil amplification and liquefaction for Padang City](#) 02008

Adrin Tohari

By using this website, you agree that EDP Sciences may store web audience measurement

OK

cookies and, on some pages, cookies from social networks. [More information and setup PDF \(3.627 MB\)](#) | [References](#) | [NASA ADS Abstract Service](#)

---

Open Access

### [Landslide disaster mitigation plan in Karang Tengah Village, Bantul district, Yogyakarta](#) 02009

Mochamad Teguh, Sri Aminatun and Wisnu Erlangga

Published online: 13 March 2020

DOI: <https://doi.org/10.1051/e3sconf/202015602009>

[PDF \(1.688 MB\)](#) | [References](#) | [NASA ADS Abstract Service](#)

---

Open Access

### [Swedish Weight Sounding: A prospective portable soil investigation tools for liquefaction assessment of residential houses in Indonesia](#) 02010

Yusa Muhamad, Bowman Elisabeth T. and Nugroho S.A

Published online: 13 March 2020

DOI: <https://doi.org/10.1051/e3sconf/202015602010>

[PDF \(1.922 MB\)](#) | [References](#) | [NASA ADS Abstract Service](#)

---

Open Access

### [Development of synthetic ground motion at a specific site in Yogyakarta town, Indonesia utilizing the PSHA Method](#) 02011

Widodo Pawirodikromo, Lalu Makrup, Mochamad Teguh and Bambang Suryo

Published online: 13 March 2020

DOI: <https://doi.org/10.1051/e3sconf/202015602011>

[PDF \(2.046 MB\)](#) | [References](#) | [NASA ADS Abstract Service](#)

---

Open Access

### [Measurement of sand grain distribution to gauge liquefaction risks at six key coastal west sumateran sites](#) 02012

Fuji Asema

Published online: 13 March 2020

DOI: <https://doi.org/10.1051/e3sconf/202015602012>

[PDF \(2.061 MB\)](#) | [References](#) | [NASA ADS Abstract Service](#)

---

Open Access

### [Analysis of potential liquefaction of sandy soils using effective confining pressure](#)

02013

Nur Indah Sari

Published online: 13 March 2020

DOI: <https://doi.org/10.1051/e3sconf/202015602013>

By using this website, you agree that EDP Sciences may store web audience measurement cookies and, on some pages, cookies from social networks. [More information and setup](#)

OK

 Open Access

### [Effect of grain shape to potential liquefaction](#) 02014

Arif Rahman

Published online: 13 March 2020

DOI: <https://doi.org/10.1051/e3sconf/202015602014>[PDF \(1.792 MB\)](#) | [References](#) | [NASA ADS Abstract Service](#) Open Access

### [Effect of use of quicklime mix on the slope surface and number of layers on embankment stability](#) 02015

Rina Yuliet, Syahril Rahmat, Elsa Eka Putri and Hendri Gusti Putra

Published online: 13 March 2020

DOI: <https://doi.org/10.1051/e3sconf/202015602015>[PDF \(1.611 MB\)](#) | [References](#) | [NASA ADS Abstract Service](#) Open Access

### [An alternative model of retaining walls on sandy area to prevent landslides](#) 02016

Deni Irda Mazni

Published online: 13 March 2020

DOI: <https://doi.org/10.1051/e3sconf/202015602016>[PDF \(2.266 MB\)](#) | [References](#) | [NASA ADS Abstract Service](#) Open Access

### [CPT - DR - D50 correlations of sands for liquefaction potential analysis](#) 02017

A Hakam, S Warzuqni, BM Adji, Junaidi, IF Muharani and Mardhatillah

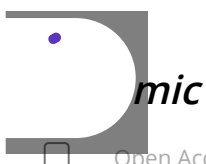
Published online: 13 March 2020

DOI: <https://doi.org/10.1051/e3sconf/202015602017>[PDF \(2.040 MB\)](#) | [References](#) | [NASA ADS Abstract Service](#) Open Access

### [Nonlinear Dynamic Analysis Adopting Effective Stress Approach of an Embankment Involving Liquefaction Potential](#) 02018

I Wayan Sengara and Ahmad Sulaiman

Published online: 02 April 2020

DOI: <https://doi.org/10.1051/e3sconf/202015602018>[PDF \(2.480 MB\)](#) | [References](#) | [NASA ADS Abstract Service](#) Open Access

By using this website, you agree that EDP Sciences may store web audience measurement

OK

cookies and, on some pages, cookies from social networks. [More information and setup](#)  
Sidiq Hargo Pandadaran, George Francisco Augusto Muabuay, Sigit Eko Kurniawan and  
Muhamad Fadhilah

Published online: 13 March 2020

DOI: <https://doi.org/10.1051/e3sconf/202015603001>

[PDF \(2.188 MB\)](#) | [References](#) | [NASA ADS Abstract Service](#)

Open Access

[Parametric studies on the ductility of axial loaded square reinforced concrete column made of normal-strength concrete \(NSC\) and high-strength steel confining rebar \(HSSCR\) with various ties configuration](#) 03002

Anis Aulia Ulfa, Bambang Piscesa, Mario M. Attard, Faimun Faimun and Pujo Aji

Published online: 13 March 2020

DOI: <https://doi.org/10.1051/e3sconf/202015603002>

[PDF \(1.975 MB\)](#) | [References](#) | [NASA ADS Abstract Service](#)

Open Access

[Research priority of the potential earthquake on the java island using decision making analysis](#) 03003

Wien Lestari, Amien Widodo, Firman Syaifuddin and Dwa Desa Warnana

Published online: 13 March 2020

DOI: <https://doi.org/10.1051/e3sconf/202015603003>

[PDF \(1.813 MB\)](#) | [References](#) | [NASA ADS Abstract Service](#)

Open Access

[Seismic performance of brick masonry infilled frame structures with bed joint reinforcements](#) 03004

Maidiawati, Jafril Tanjung, Yulia Hayati, Agus and Satria Rangga

Published online: 13 March 2020

DOI: <https://doi.org/10.1051/e3sconf/202015603004>

[PDF \(2.012 MB\)](#) | [References](#) | [NASA ADS Abstract Service](#)

Open Access

[Modal pushover analysis on reinforced concrete arch bridge to estimate seismic responses](#) 03005

Lukman Murdiansyah, Robby Permata and Donald Essen

Published online: 13 March 2020

DOI: <https://doi.org/10.1051/e3sconf/202015603005>

[PDF \(2.419 MB\)](#) | [References](#) | [NASA ADS Abstract Service](#)

Open Access



By using this website, you agree that EDP Sciences may store web audience measurement

OK

cookies and, on some pages, cookies from social networks. [More information and setup](#)

Published online: 13 March 2020

DOI: <https://doi.org/10.1051/e3sconf/202015603006>

[PDF \(2.143 MB\)](#) | [References](#) | [NASA ADS Abstract Service](#)

Open Access

### [Numerical model for investigating seismic performance of Prestressed Hollow Concrete \(PHC\) piles with Fiber section element](#) 03007

Angga Fajar Setiawan, Muhamad Fauzi Darmawan, Sito Ismanti, Sunarso Mukhlis and Adityawarman Guntara Muria

Published online: 13 March 2020

DOI: <https://doi.org/10.1051/e3sconf/202015603007>

[PDF \(3.745 MB\)](#) | [References](#) | [NASA ADS Abstract Service](#)

Open Access

### [Risk analysis of seismic bridge damage: case study after Lombok and Palu earthquake](#) 03008

Risma Putra and Winarputro Adi Riyono

Published online: 13 March 2020

DOI: <https://doi.org/10.1051/e3sconf/202015603008>

[PDF \(2.903 MB\)](#) | [References](#) | [NASA ADS Abstract Service](#)

Open Access

### [Site-Specific Response Analysis \(SSRA\) and pairs of ground- motions time-history generation of a site in Jakarta](#) 03009

Sengara I Wayan and Komerdevi Det

Published online: 02 April 2020

DOI: <https://doi.org/10.1051/e3sconf/202015603009>

[PDF \(2.926 MB\)](#) | [References](#) | [NASA ADS Abstract Service](#)

Open Access

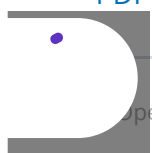
### [New 2019 Risk-Targeted Ground Motions for Spectral Design Criteria in Indonesian Seismic Building Code](#) 03010

I Wayan Sengara, Masyhur Irsyam, Indra Djati Sidi, Andri Mulia, Muhamad Asrurifak, Daniel Hutabarat and Windu Partono

Published online: 02 April 2020

DOI: <https://doi.org/10.1051/e3sconf/202015603010>

[PDF \(2.689 MB\)](#) | [References](#) | [NASA ADS Abstract Service](#)



Open Access

ERRATUM

By using this website, you agree that EDP Sciences may store web audience measurement

OK

cookies and, on some pages, cookies from social networks. [More information and setup](#)  
Sidiq Hargo Pandadaran, George Francisco Augusto Muabuay, Sigit Eko Kurniawan and  
Muhamad Fadhilah

Published online: 02 April 2020

DOI: <https://doi.org/10.1051/e3sconf/202015603011>

[PDF \(973.8 KB\)](#) | [NASA ADS Abstract Service](#)

## - *Tsunami*

Open Access

[The accessibility of tsunami prone areas society towards potential shelters: a case study in Padang Barat sub-district](#) 04001

Titi Kurniati, Adrial Sy and Purnawan Purnawan

Published online: 13 March 2020

DOI: <https://doi.org/10.1051/e3sconf/202015604001>

[PDF \(1.860 MB\)](#) | [References](#) | [NASA ADS Abstract Service](#)

Open Access

[Exploring key issues related to tsunami shelter in Padang city – Indonesia](#) 04002

Badrul Mustafa Kemal and H Putra

Published online: 13 March 2020

DOI: <https://doi.org/10.1051/e3sconf/202015604002>

[PDF \(1.685 MB\)](#) | [References](#) | [NASA ADS Abstract Service](#)

Open Access

[2D numerical simulation of urban dam break and its effect to building using lax scheme with numerical filter](#) 04003

Tias Ravena Maitsa, M Gilang Indra Mardika, Mohammad Bagus Adityawan, Dhemi Harlan, Dyah Kusumastuti and Arno Adi Kuntoro

Published online: 13 March 2020

DOI: <https://doi.org/10.1051/e3sconf/202015604003>

[PDF \(1.753 MB\)](#) | [References](#) | [NASA ADS Abstract Service](#)

Open Access

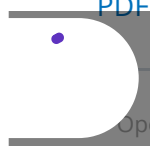
[Prediction of tsunami inundation impact in Padang city](#) 04004

Purnawan, Vera Surtia Bachtart and Titi Kurniati

Published online: 13 March 2020

DOI: <https://doi.org/10.1051/e3sconf/202015604004>

[PDF \(2.242 MB\)](#) | [References](#) | [NASA ADS Abstract Service](#)



Open Access

By using this website, you agree that EDP Sciences may store web audience measurement

OK

cookies and, on some pages, cookies from social networks. [More information and setup](#)

Published online: 13 March 2020

DOI: <https://doi.org/10.1051/e3sconf/202015604005>

[PDF \(1.661 MB\)](#) | [References](#) | [NASA ADS Abstract Service](#)

Open Access

[A quantitative analysis of the level of congestion that occurred on the tsunami evacuation route during the tsunami disaster](#) 04006

Yosritzal, Arif Setyaji and Badrul Mustafa Kemal

Published online: 13 March 2020

DOI: <https://doi.org/10.1051/e3sconf/202015604006>

[PDF \(3.568 MB\)](#) | [References](#) | [NASA ADS Abstract Service](#)

Open Access

[Accessibilty analysis of tsunami evacuation route to self supported shelter in sub-district Pasie Nan Tigo, Padang City](#) 04007

Febrin Anas Ismail, Masrilayanti and Tria Yuli Anggraini

Published online: 13 March 2020

DOI: <https://doi.org/10.1051/e3sconf/202015604007>

[PDF \(1.875 MB\)](#) | [References](#) | [NASA ADS Abstract Service](#)

Open Access

[Assessment of road traffic performance of the Tsunami evacuation road in Padang Municipality area based on the traffic volume simulation approach](#) 04008

Yossyafra Yossyafra, Nurhuda Fitri, Rahmat Punama Sidhi, Yosritzal Yosritzal and Deni Irda Mazni

Published online: 13 March 2020

DOI: <https://doi.org/10.1051/e3sconf/202015604008>

[PDF \(2.828 MB\)](#) | [References](#) | [NASA ADS Abstract Service](#)

Open Access

[Raising student's awareness of tsunami hazard in rumah tahfiz bakti ilaahi \(RTBI\) Bengkulu](#) 04009

Ade S Wahyuni, Mukhlis Islam and Elhusna

Published online: 13 March 2020

DOI: <https://doi.org/10.1051/e3sconf/202015604009>

[PDF \(1.946 MB\)](#) | [References](#) | [NASA ADS Abstract Service](#)

Open Access

[Indraglang regency spatial evaluation based on tsunami hazard potential](#) 04010

Alifan Nauval Majid and Triarko Nurlambang

Published online: 13 March 2020

By using this website, you agree that EDP Sciences may store web audience measurement cookies and, on some pages, cookies from social networks. [More information and setup](#)

OK

## - Structure

 Open Access

[Earthquake hazard mitigation analysis of the pier 231 Harbour Road Bridge](#) 05001

N. Retno Setiati and Ireng Guntorojati

Published online: 13 March 2020

DOI: <https://doi.org/10.1051/e3sconf/202015605001>

[PDF \(2.627 MB\)](#) | [References](#) | [NASA ADS Abstract Service](#)

 Open Access

[Effect of flat slab to progressive collapse on irregular structures building](#) 05002

Roni Suhendra, Zulfikar Djauhari, Reni Suryanita and Enno Yuniarto

Published online: 13 March 2020

DOI: <https://doi.org/10.1051/e3sconf/202015605002>

[PDF \(1.611 MB\)](#) | [References](#) | [NASA ADS Abstract Service](#)

 Open Access

[Seismic response of cable-stayed bridge subjected to single-support excitation on various soil condition](#) 05003

Masrilayanti, Ade Prayoga Nasution and Ruddy Kurniawan

Published online: 13 March 2020

DOI: <https://doi.org/10.1051/e3sconf/202015605003>

[PDF \(2.112 MB\)](#) | [References](#) | [NASA ADS Abstract Service](#)

 Open Access

[Seismic capacity evaluation of the damaged reinforced concrete building during Palu earthquake 2018](#) 05004

Fajar Nugroho

Published online: 13 March 2020

DOI: <https://doi.org/10.1051/e3sconf/202015605004>

[PDF \(1.950 MB\)](#) | [References](#) | [NASA ADS Abstract Service](#)

 Open Access

[Evaluation of seismic capacity on the building law Faculty Tadulako University due to Palu earthquake 2018](#) 05005

Hamdeni Medriosa

Published online: 13 March 2020

DOI: <https://doi.org/10.1051/e3sconf/202015605005>

[PDF \(1.702 MB\)](#) | [References](#) | [NASA ADS Abstract Service](#)

By using this website, you agree that EDP Sciences may store web audience measurement

OK

cookies and, on some pages, cookies from social networks. [More information and setup](#)  
**Comparison of structural performance of open frame structures based on SNI 03-1726-2002 and SNI 03-1726-2012** 05006

Siti Aisyah Nurjannah, Yoga Megantara, Erwin Lim and Iswandi Imran

Published online: 13 March 2020

DOI: <https://doi.org/10.1051/e3sconf/202015605006>

[PDF \(2.048 MB\)](#) | [References](#) | [NASA ADS Abstract Service](#)

Open Access

**Evaluation of concretization of local road in Padang city using the importance satisfaction analysis and customer satisfaction index methods** 05007

Yosritzal, Elsa Nofriyanti and Yossyafra

Published online: 13 March 2020

DOI: <https://doi.org/10.1051/e3sconf/202015605007>

[PDF \(1.684 MB\)](#) | [References](#) | [NASA ADS Abstract Service](#)

Open Access

**StormPav Green Pavement the environmentally friendly pavement** 05008

Elsa Eka Putri, Rina Yuliet, Seng Cheh Hoo, Md Abdul Mannan, Larry Silas, Wan Hashim Wan Ibrahim, Mohamad Raduan Kabit, Ron and Sadia Tasnim

Published online: 13 March 2020

DOI: <https://doi.org/10.1051/e3sconf/202015605008>

[PDF \(1.983 MB\)](#) | [References](#) | [NASA ADS Abstract Service](#)

Open Access

**Finite element modeling of concrete confined with circular thin-walled steel sheet** 05009

Ashando Hario Yudhanto, Bambang Pisceca, Mario M. Attard, Budi Suswanto and Priyo Suprobo

Published online: 13 March 2020

DOI: <https://doi.org/10.1051/e3sconf/202015605009>

[PDF \(2.255 MB\)](#) | [References](#) | [NASA ADS Abstract Service](#)

Open Access

**Effect of polypropylene fibers on high strength mortar subjected to elevated temperature** 05010

Muhammad Ridwan, Hu Liang Jun and Isamu Yoshitake

Published online: 13 March 2020

DOI: <https://doi.org/10.1051/e3sconf/202015605010>

[PDF \(1.802 MB\)](#) | [References](#) | [NASA ADS Abstract Service](#)

Open Access

By using this website, you agree that EDP Sciences may store web audience measurement

OK

cookies and, on some pages, cookies from social networks. [More information and setup](#)  
Wisnu Erlangga, Mochamad Teguh and Lalu Makrup

Published online: 13 March 2020

DOI: <https://doi.org/10.1051/e3sconf/202015605011>

[PDF \(1.372 MB\)](#) | [References](#) | [NASA ADS Abstract Service](#)

Open Access

### [Numerical study of bracing section variations in an eccentrically braced frame](#) 05012

Sabril Haris, Nidiasari and Sonya Triaz Pramadhani Putri

Published online: 13 March 2020

DOI: <https://doi.org/10.1051/e3sconf/202015605012>

[PDF \(1.923 MB\)](#) | [References](#) | [NASA ADS Abstract Service](#)

Open Access

### [Optimum Structural Design of Self-Supported Shelter for Tsunami Evacuation in Padang City](#) 05013

Febrin Anas Ismail, Jati Sunaryati and Deded Eka Sahputra

Published online: 13 March 2020

DOI: <https://doi.org/10.1051/e3sconf/202015605013>

[PDF \(1.633 MB\)](#) | [References](#) | [NASA ADS Abstract Service](#)

Open Access

### [Cyclic behavior of the R/C frames with reinforced masonry infills](#) 05014

Jafril Tanjung and Maidiawati

Published online: 13 March 2020

DOI: <https://doi.org/10.1051/e3sconf/202015605014>

[PDF \(1.895 MB\)](#) | [References](#) | [NASA ADS Abstract Service](#)

Open Access

### [Structural evaluation of 3-story dormitory reinforced concrete building considering soil liquefaction potential](#) 05015

Fauzan, Nadia Milla Hanifah, Willy Peratundhika E, Mutia Putri Monika and Zev Al Jauhari

Published online: 13 March 2020

DOI: <https://doi.org/10.1051/e3sconf/202015605015>

[PDF \(2.012 MB\)](#) | [References](#) | [NASA ADS Abstract Service](#)

Open Access

### [Experimental investigation on interlocking concrete block for masonry wall of non-engineered earthquake resistant buildings](#) 05016

Mochamad Teguh, Furqon Widi Rivai, Novi Rahmyanti and Erik Wahyu Pradana

By using this website, you agree that EDP Sciences may store web audience measurement

OK

cookies and, on some pages, cookies from social networks. [More information and setup](#)  
[PDF \(2.097 MB\)](#) | [References](#) | [NASA ADS Abstract Service](#)

---

Open Access

[Rehabilitation and reconstruction of community housing post-West Nusa Tenggara Earthquake 2018 \(A case of Lauk Rurung Timuk and Lauk Rurung Barat Sub-villages, Sembalun Bumbung, Sembalun, East Lombok\)](#) 05017

Choirul Rama Saputra

Published online: 13 March 2020

DOI: <https://doi.org/10.1051/e3sconf/202015605017>

[PDF \(1.910 MB\)](#) | [References](#) | [NASA ADS Abstract Service](#)

---

Open Access

[Bridge construction cost saving from using LRB \(Lead Rubber Bearing\) in the area prone to earthquake, Kenteng bridge case study](#) 05018

Ariono Dhanis, Herdianto Arifin and Iwan Zarkasi

Published online: 13 March 2020

DOI: <https://doi.org/10.1051/e3sconf/202015605018>

[PDF \(2.130 MB\)](#) | [References](#) | [NASA ADS Abstract Service](#)

---

Open Access

[Analysis of school damage due to Lombok earthquake on August 2018](#) 05019

M Sofian Asmirza

Published online: 13 March 2020

DOI: <https://doi.org/10.1051/e3sconf/202015605019>

[PDF \(1.941 MB\)](#) | [References](#) | [NASA ADS Abstract Service](#)

---

Open Access

[Seismic design of a super-tall building: Indonesian experience](#) 05020

Davy Sukamta and Nick Alexander

Published online: 13 March 2020

DOI: <https://doi.org/10.1051/e3sconf/202015605020>

[PDF \(2.322 MB\)](#) | [References](#) | [NASA ADS Abstract Service](#)

---

Open Access

[Performance of asymmetric structures reviewed with based plastic design performance \(case study of application on building in Pekanbaru\)](#) 05021

Lati Sunaryati, Nidiasari and Alfadian

Published online: 13 March 2020

DOI: <https://doi.org/10.1051/e3sconf/202015605021>

[PDF \(1.800 MB\)](#) | [References](#) | [NASA ADS Abstract Service](#)

---

By using this website, you agree that EDP Sciences may store web audience measurement

OK

cookies and, on some pages, cookies from social networks. [More information and setup](#)

## [Effect of stirrup type on shear capacity of reinforced concrete members with circular cross section](#) 05022

Sri Hartati Dewi, Rendy Thamrin, Zaidir and Taufik

Published online: 13 March 2020

DOI: <https://doi.org/10.1051/e3sconf/202015605022>

[PDF \(2.251 MB\)](#) | [References](#) | [NASA ADS Abstract Service](#)

Open Access

## [Repair and retrofitting of buildings post earthquake](#) 05023

Zaidir

Published online: 13 March 2020

DOI: <https://doi.org/10.1051/e3sconf/202015605023>

[PDF \(3.600 MB\)](#) | [References](#) | [NASA ADS Abstract Service](#)

Open Access

## [Seismic isolation system of two hinged arch suspended-deck bridge: a case study on Kalikuto bridge - Indonesia](#) 05024

Tri Suryadi, Arvila Delitriana, Zdenek Fukar and Rusri Tjendana

Published online: 13 March 2020

DOI: <https://doi.org/10.1051/e3sconf/202015605024>

[PDF \(2.166 MB\)](#) | [References](#) | [NASA ADS Abstract Service](#)

Open Access

## [Strengthening of steel member using unbonded CFRP laminates](#) 05025

Fengky Satria Yoresta, Ryotaro Maruta, Genki Mieda and Yukihiro Matsumoto

Published online: 13 March 2020

DOI: <https://doi.org/10.1051/e3sconf/202015605025>

[PDF \(1.750 MB\)](#) | [References](#) | [NASA ADS Abstract Service](#)

Open Access

## [The effect of seismic base isolation on structural response of a 12-story hotel building in Padang, Indonesia](#) 05026

Fauzan, Afdhalul Ihsan, Mutia Putri Monika and Zev Al Jauhari

Published online: 13 March 2020

DOI: <https://doi.org/10.1051/e3sconf/202015605026>

[PDF \(1.911 MB\)](#) | [References](#) | [NASA ADS Abstract Service](#)

Open Access

## [EM based fracture analysis of single notch reactive powder concrete specimen subjected to three point bending test](#) 05027



By using this website, you agree that EDP Sciences may store web audience measurement

OK

cookies and, on some pages, cookies from social networks. [More information and setup](#)

DOI: <https://doi.org/10.1051/e3sconf/202015605027>

[PDF \(2.322 MB\)](#) | [References](#) | [NASA ADS Abstract Service](#)

Open Access

### [Parameter Identification for Modeling Steel Fiber Reinforced Concrete under Compression to Prevent Concrete Cover Spalling under Severe Earthquake Loading Condition](#) 05028

Nia Dwi Puspitasari, Bambang Pisceca, M. Attard Mario, Dwi Prasetya, Faimun Faimun, Pujo Aji and Priyo Suprobo

Published online: 02 April 2020

DOI: <https://doi.org/10.1051/e3sconf/202015605028>

[PDF \(1.825 MB\)](#) | [References](#) | [NASA ADS Abstract Service](#)

Open Access

### [A new structural health monitoring system for real-time evaluation of building damage](#) 05029

Koichi Kusunoki

Published online: 02 April 2020

DOI: <https://doi.org/10.1051/e3sconf/202015605029>

[PDF \(3.195 MB\)](#) | [References](#) | [NASA ADS Abstract Service](#)

**E3S Web of Conferences**

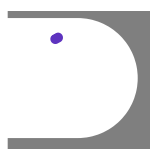
eISSN: 2267-1242



[Mentions légales](#)

[Contacts](#)

[Privacy policy](#)



## Statement of Peer review

In submitting conference proceedings to *Web of Conferences*, the editors of the proceedings certify to the Publisher that

1. They adhere to its **Policy on Publishing Integrity** in order to safeguard good scientific practice in publishing.
2. All articles have been subjected to peer review administered by the proceedings editors.
3. Reviews have been conducted by expert referees, who have been requested to provide unbiased and constructive comments aimed, whenever possible, at improving the work.
4. Proceedings editors have taken all reasonable steps to ensure the quality of the materials they publish and their decision to accept or reject a paper for publication has been based only on the merits of the work and the relevance to the journal.

Title, date and place of the conference :

---

4<sup>th</sup> International Conference on Earthquake Engineering & Disaster Mitigation (4<sup>th</sup> ICEEDM), September 25-27, 2019 at Grand Inna Padang Hotel, Padang, West Sumatera

Proceeding editors:

---

Prof. Dr Shyh-Jiann Hwang  
Prof. Dr. Louise Comfort  
Prof. Dr. I Wayan Segara  
Prof. Dr. Abdul Hakam

Date and editors' signature :

February 20<sup>th</sup> 2020

---

Prof. Dr Shyh-Jiann Hwang

Prof. Dr. Louise Comfort

Prof. Dr. I Wayan Segara

Prof. Dr. Abdul Hakam

# 2019 4<sup>TH</sup> ICEEDM



# CERTIFICATE

as Presenter

This Certificate is Presented to :

*Nosritza*

The 4<sup>TH</sup> INTERNATIONAL CONFERENCE ON EARTHQUAKE  
ENGINEERING AND DISASTER MITIGATION ( ICEEDM )

"Commemoration 10 years of the 2009 West-Sumatra Earthquake"  
in Padang, West-Sumatra, Indonesia  
on 25-27 September 2019


President of AARGI



**AARGI**  
ASOCIASI AMAL REKREASI BERSAMA-SAMA INDONESIA

Prof. Dr. I Wayan Sengara

Conference Chairman



**FEBRIN ANAS ISMAIL**

Febrin Anas Ismail, Dr.Eng

