

Jurnal-dr.Finny1.pdf

by

Submission date: 19-Aug-2019 12:24AM (UTC+0800)

Submission ID: 1161078887

File name: Jurnal-dr.Finny1.pdf (1.65M)

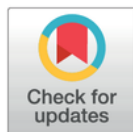
Word count: 7062

Character count: 38171

RESEARCH ARTICLE

Carriage of *Streptococcus pneumoniae*, *Haemophilus influenzae*, *Moraxella catarrhalis*, and *Staphylococcus aureus* in Indonesian children: A cross-sectional study

Eileen M. Dunne^{1,2}, Chrysanti Murad³, Sunaryati Sudigdoadi³, Eddy Fadlyana⁴, Rodman Tarigan⁴, Sang Ayu Kompiyang Indriyani⁵, Casey L. Pell¹, Emma Watts¹, Catherine Satzke^{1,2,6}, Jason Hinds^{7,8}, Nurhandini Eka Dewi⁹, Finny Fitry Yani¹⁰, Kusnandi Rusmil⁴, E. Kim Mulholland^{2,11}, Cissy Kartasasmita^{4*}



1 Pneumococcal Research, Murdoch Children's Research Institute, Parkville, Victoria, Australia, **2** Department of Paediatrics, The University of Melbourne, Parkville, Victoria, Australia, **3** Department of Biomedical Sciences, Division of Microbiology, Faculty of Medicine, Universitas Padjadjaran, Bandung, West Java, Indonesia, **4** Department of Child Health, Universitas Padjadjaran/Hasan Sadikin General Hospital, Bandung, West Java, Indonesia, **5** West Nusa Tenggara Province General Hospital, Mataram, West Nusa Tenggara, Indonesia, **6** Department of Microbiology and Immunology, The University of Melbourne at the Peter Doherty Institute for Infection and Immunity, Parkville, Victoria, Australia, **7** Institute for Infection and Immunity, St. George's University of London, London, United Kingdom, **8** BUGS Bioscience, London Bioscience Innovation Centre, London, United Kingdom, **9** District Health Office of Central Lombok, Praya, West Nusa Tenggara, Indonesia, **10** Department of Child Health, Universitas Andalas, Padang, West Sumatra, Indonesia, **11** Department of Infectious Disease Epidemiology, London School of Hygiene and Tropical Medicine, London, United Kingdom

* These authors contributed equally to this work.

* cbkarta@gmail.com

OPEN ACCESS

Citation: Dunne EM, Murad C, Sudigdoadi S, Fadlyana E, Tarigan R, Indriyani SAK, et al. (2018) Carriage of *Streptococcus pneumoniae*, *Haemophilus influenzae*, *Moraxella catarrhalis*, and *Staphylococcus aureus* in Indonesian children: A cross-sectional study. PLOS ONE 13(4): e0195098. <https://doi.org/10.1371/journal.pone.0195098>

Editor: Daniela Flavia Hozbor, Universidad Nacional de la Plata, ARGENTINA

Received: December 18, 2017

Accepted: March 18, 2018

Published: April 12, 2018

Copyright: © 2018 Dunne et al. This is an open access article distributed under the terms of the [Creative Commons Attribution License](https://creativecommons.org/licenses/by/4.0/), which permits unrestricted use, distribution, and reproduction in any medium, provided the original author and source are credited.

Data Availability Statement: Data from this study are not publicly available due to ethical reasons. Requests for data may be sent to the Health Research Ethics Committee, Universitas Padjadjaran Faculty of Medicine, via the chair of the committee, Dr Meita Dhamayanti (meita.dhamayanti@unpad.ac.id) and/or the Institutional Review Board (kep.k.fk.unpad@gmail.com). Please note that additional analyses not included in the study protocol will require ethical approval from the Health Research Ethics Committee, Universitas

Abstract

Streptococcus pneumoniae is an important cause of infection and commonly colonizes the nasopharynx of young children, along with other potentially pathogenic bacteria. The objectives of this study were to estimate the carriage prevalence of *S. pneumoniae*, *Haemophilus influenzae*, *Moraxella catarrhalis*, and *Staphylococcus aureus* in young children in Indonesia, and to examine interactions between these bacterial species. 302 healthy children aged 12–24 months were enrolled in community health centers in the Bandung, Central Lombok, and Padang regions. Nasopharyngeal swabs were collected and stored according to World Health Organization recommendations, and bacterial species detected by qPCR. Pneumococcal serotyping was conducted by microarray and latex agglutination/Quellung. Overall carriage prevalence was 49.5% for *S. pneumoniae*, 27.5% for *H. influenzae*, 42.7% for *M. catarrhalis*, and 7.3% for *S. aureus*. Prevalence of *M. catarrhalis* and *S. pneumoniae*, as well as pneumococcal serotype distribution, varied by region. Positive associations were observed for *S. pneumoniae* and *M. catarrhalis* (OR 3.07 [95%CI 1.91–4.94]), and *H. influenzae* and *M. catarrhalis* (OR 2.34 [95%CI 1.40–3.91]), and a negative association was found between *M. catarrhalis* and *S. aureus* (OR 0.06 [95%CI 0.01–0.43]). Densities of *S. pneumoniae*, *H. influenzae*, and *M. catarrhalis* were positively correlated when two of these species were present. Prior to pneumococcal vaccine introduction, pneumococcal carriage prevalence and serotype distribution varies among children living in different regions of

Padjajaran Faculty of Medicine, and that due to Indonesian governmental regulations, sharing of Indonesian data with international parties may require a Data Transfer Agreement.

Funding: JH is affiliated with BUGS Bioscience, London Bioscience Innovation Centre but is not employed by and receives no personal income from BUGS Bioscience. This study was funded by PATH Vaccine Solutions <https://www.path.org/>. Murdoch Children's Research Institute was supported by the Victorian Government's Operational Infrastructure Support Program. PATH Vaccine Solutions was involved in discussions relating to study design and provided salary support for EMD, CM, SS, RT, SAKI, CLP, EW, NED, FFY, KR, EKM, and CK. The specific roles of these authors are articulated in the 'author contributions' section. The funders had no role in data collection and analysis, decision to publish, or preparation of the manuscript.

Competing interests: I have read the journal's policy and the authors of this manuscript have the following competing interests: EF, RT, KR, and CK have been investigators on clinical trials funded by Biofarma. JH is affiliated with BUGS Bioscience, London Bioscience Innovation Centre. BUGS Bioscience is a not-for-profit spin-out of St George's, University of London (SGUL) founded to support molecular serotyping services and develop associated software. JH is employed by SGUL and not BUGS Bioscience. JH is co-founder, board member and shareholder of BUGS Bioscience but receives no personal income. JH is an investigator on studies conducted on behalf SGUL or BUGS Bioscience that are sponsored and/or funded by vaccine manufacturers including Pfizer, GlaxoSmithKline, Sanofi Pasteur and PATH. This does not alter our adherence to PLOS ONE policies on sharing data and materials.

Indonesia. Positive associations in both carriage and density identified among *S. pneumoniae*, *H. influenzae*, and *M. catarrhalis* suggest a synergistic relationship among these species with potential clinical implications.

Introduction

Streptococcus pneumoniae (pneumococcus) is a Gram-positive bacterium that causes a wide range of infections including otitis media, pneumonia, sepsis, and meningitis. Pneumococcal disease is a major cause of pediatric morbidity and mortality worldwide, with disease primarily occurring in low and middle income countries [1]. The primary reservoir for pneumococci is the human nasopharynx, and nasopharyngeal carriage rates are highest among young children, ranging from 19–86% in different epidemiological settings [2]. Colonization of the nasopharynx is typically asymptomatic although can also be associated with mild respiratory symptoms such as runny nose [3]. Importantly, carriage is considered a prerequisite to pneumococcal disease and serves as the source of pneumococcal transmission [4]. High pneumococcal carriage density has been linked to respiratory infection and pneumonia in children, and implicated in transmission in animal studies [5, 6].

The nasopharynx is a complex and dynamic environment, where pneumococci interact with the host immune system and other colonizing bacteria, including potential pathogens such as *Haemophilus influenzae*, *Moraxella catarrhalis*, and *Staphylococcus aureus*. In some cases, these interactions are mutually beneficial, whereas in others there is evidence for competition [7]. A negative association between *S. pneumoniae* and *S. aureus* in children has been well-documented [8, 9]. In contrast, positive associations have been identified among *S. pneumoniae*, *H. influenzae* and *M. catarrhalis* [7]. Densities of *S. pneumoniae* and non-typeable *H. influenzae* (NTHi) are positively associated during co-colonization [10, 11].

Indonesia is a lower-middle income country consisting of over 10,000 islands and has the fourth highest population in the world, estimated at over 260 million (www.worldbank.org). Pentavalent vaccine, which protects against *H. influenzae* type B (Hib), was introduced in Indonesia in 2013. Pneumococcal conjugate vaccines are not part of the national immunization program, although regional introduction commenced in late 2017. Previous studies conducted in Indonesia have reported a 43–48% pneumococcal carriage prevalence among healthy young children, with serotypes 6A/B, 15B/C, 11A, 19F, and 23F most commonly identified [12–14]. In Lombok, a *H. influenzae* carriage rate of 32% was found in children under two years old prior to Hib vaccine introduction [15]. There are no published data on carriage of *S. aureus* or *M. catarrhalis* in healthy children in Indonesia. The objectives of the current study were to investigate the carriage of *S. pneumoniae*, *H. influenzae*, *M. catarrhalis*, and *S. aureus* in healthy young children in three diverse regions of Indonesia, and to examine potential interactions between these bacterial species. These aims were achieved using a cross-sectional study design.

Methods

Study design and participants

This cross-sectional study was conducted between February–March 2016 in six health centers (puskesmas) located in three regions of Indonesia: Bandung, West Java (Puskesmas Puter, Bandung city; Puskesmas Jaya Mekar, Padalarang district of Bandung); Central Lombok, West

Nusa Tenggara (Puskesmas Praya, Praya city; Puskesmas Ubung, Central Lombok); and Padang, West Sumatra (Puskesmas Padang Timur in Padang city; Puskesmas Bungus, outside Padang city). A sample size of 100 participants per study region was selected based on an estimated pneumococcal carriage prevalence of 50% at 12–23 months of age [13]. This sample size would provide a precision (estimated by widths of 95% confidence intervals) for the prevalence rate of approximately 10% for each study region and 6% overall.

Health center staff identified and invited eligible children, with their parent or guardian, to the health center on designated study days. Written informed consent was obtained from the parents/guardians prior to the conduct of any study procedures. Study protocols and consent forms were approved by the Health Research Ethics Committee, Universitas Padjadaran Faculty of Medicine (Indonesia) and the Royal Children's Hospital Human Research Ethics Committee (Australia; RCH HREC reference number 35258). Inclusion criteria were being 12–24 (inclusive) months of age and residing within the health center jurisdiction. Exclusion criteria were moderate or severe acute illness, temperature $\geq 38^{\circ}\text{C}$, antibiotic use within the previous 14 days, or previous receipt of pneumococcal conjugate vaccine.

Study procedures and laboratory analyses

Data on demographic characteristics, living conditions, and medical history were recorded on a case report form. A nasopharyngeal swab was collected and stored according to World Health Organization recommendations using a flocked, nylon swab [16]. Swabs were placed into 1 ml skim milk tryptone glucose glycerol media (STGG), stored in a cool box, and transported to the local laboratory within 6 hours of collection. Samples were then vortexed, aliquoted, and stored at ultra-low temperature (ULT). Samples from the Padang and Central Lombok sites were shipped to the central laboratory (Microbiology Laboratory, Faculty of Medicine, Universitas Padjadaran, Bandung) on dry ice and stored at ULT until analysis. Storage in STGG at -70°C is optimal for recovery of *S. pneumoniae* from nasopharyngeal samples [17].

STGG DNA extraction and qPCR. For DNA extraction, 200 μl of the STGG sample was thawed and bacteria pelleted by centrifugation at $5,500 \times g$ for 8 min. Bacterial lysis was conducted by a 60 min incubation at 37°C in a 20 mM Tris-HCl, 2 mM sodium EDTA buffer containing 20 mg/ml lysozyme, 1% (v/v) Triton X-100, 0.075 mg/ml mutanolysin and 2 mg/ml RNase A, followed by the addition of proteinase K and Buffer AL from the QIAamp 96 DNA QIAcube HT Kit (Qiagen) and 30 min incubation at 56°C . Lysates were transferred onto the QIAcube HT instrument (Qiagen) and DNA extraction performed according to the manufacturer's instructions. Pneumococci were detected using real-time quantitative PCR (qPCR) targeting the *lytA* gene [18]. qPCR was conducted in 25 μl reactions containing 5 μl of template DNA on an Applied Biosystems 7500 real-time PCR machine using TaqMan GeneExpression Mastermix (Applied Biosystems). *H. influenzae*, *M. catarrhalis*, and *S. aureus* were detected using the FTD Bacterial Pneumonia CAP qPCR kit (Fast-Track Diagnostics). Standard curves for quantification were prepared using plasmid standards containing a single copy of the target gene (Fast-Track Diagnostics). Results are reported as genome equivalents/ml (GE/ml), which approximates bacterial density assuming each bacterial cell contains one genome with a single copy of the target gene. For *H. influenzae*, *M. catarrhalis*, and *S. aureus*, samples with a Ct value < 35 were considered positive and 35–40 considered negative. A Hib-specific qPCR targeting the *bscB* gene was conducted on *H. influenzae*-positive samples [19]. For pneumococcus, samples with a Ct value < 35 were considered positive, and those from 35–40 considered equivocal and confirmed by culture. Limits of detection were 40 GE/ml for *S. pneumoniae*, 3,890 GE/ml for *H. influenzae*, 8,700 GE/ml for *M. catarrhalis*, and 3,570 GE/ml for *S. aureus*.

Culture and pneumococcal serotyping. Pneumococcal positive and equivocal samples were cultured overnight at 37°C in 5% CO₂, on sheep or horse blood agar containing 5 µg/ml gentamicin. For all samples containing α-hemolytic growth, a representative colony was sub-cultured on non-selective blood agar with an optochin disk, and if optochin susceptible, stored in STGG at ULT. The remaining growth from the original culture plate was emulsified into 1 ml phosphate-buffer saline, bacteria pelleted by centrifugation at 11,300 × g for 5 min, and stored at ULT. DNA was extracted from culture pellets for microarray as described above, without the addition of mutanolysin. Molecular serotyping by microarray was conducted using Senti-SP v1.6 (BUGS Bioscience) as previously described [20]. Stored isolates were serotyped by latex agglutination as previously described [21, 22]. If a serotype could not be determined by latex agglutination, Quellung was conducted using commercially available pneumococcal antisera (Statens Serum Institut, Copenhagen, Denmark) [23]. Latex/Quellung results were used for samples with growth of only one alpha-hemolytic colony or if DNA concentrations were too low to determine serotype by microarray. Serotyping results were consistent between the two methods unless otherwise noted. Serotypes 15B and 15C were reported as 15B/C as this serotype is known to interconvert [24].

Statistical analysis. Statistical analyses were conducted using Stata version 14.2 (Stata-Corp LLC) and GraphPad Prism version 7.03 for Windows (GraphPad Software). The chi-squared test was used to analyze categorical data. Continuous data were assessed for normality and the t-test or Mann-Whitney test were used to compare two groups and ANOVA or Kruskal-Wallis for multiple groups, as appropriate. Bacterial density data were log₁₀ transformed prior to analysis. Logistic regression models were used to examine differences in carriage prevalence among sites and relationships between bacterial species. Potential risk factors shown in Table 1 were tested by univariable analysis and those found to be significantly associated with odds of carriage were included in a multivariable model to calculate adjusted odds ratios. Ethnicity was not included in the model due to co-linearity with site. P < 0.05 was considered significant. Spearman's correlation was used to examine the relationship between densities of bacterial species.

Results

A total of 302 children were included in this study, with participant characteristics shown in Table 1. Overall, pneumococcal carriage prevalence was 49.5% (95%CI 43.7–55.3), followed by 42.7% (95%CI 37.1–48.5) for *M. catarrhalis*, 27.5% (95%CI 22.5–32.9) for *H. influenzae*, and 7.3% (95%CI 4.6–10.8) for *S. aureus*. Carriage prevalence by region is shown in Fig 1. Carriage differed significantly by region for *S. pneumoniae* and *M. catarrhalis* (p < 0.001 and p = 0.015, respectively, chi-squared test). To evaluate whether differences in carriage prevalence were due to differences in risk factors among regions, adjusted odds ratios (aOR) were determined by logistic regression models that included income, the presence of two or more children under five in the household, maternal education level, and presence of upper respiratory tract infection (URTI) symptoms. The difference in carriage prevalence of *S. pneumoniae* and *M. catarrhalis* among regions remained significant. For *S. pneumoniae*, aOR compared to Padang (reference) was 3.47 (95%CI 1.87–6.53) for Bandung and 1.78 (95%CI 0.93–3.42) for Central Lombok (p = 0.0006, chi-squared test). For *M. catarrhalis*, aOR compared to Padang was 1.60 (95%CI 0.86–2.97) for Bandung and 2.60 (95%CI 1.36–4.97) for Central Lombok (p = 0.015, chi-squared test).

A total of 164 pneumococci belonging to 32 capsular serotypes and one genetic lineage of acapsular pneumococci (NT2) were identified in this study [25]. Five *lytA*-positive samples were culture negative and therefore not serotyped, and one sample was excluded for technical

Table 1. Characteristics of study participants.

Characteristics	Bandung region (total = 100) N (%)	Central Lombok (total = 101) N (%)	Padang region (total = 101) N (%)	P value ^a
Sex				
Male	42 (42.0)	50 (49.5)	52 (51.5)	0.365
Female	58 (58.0)	51 (50.5)	49 (48.5)	
Age (months)				
Mean ± SD	19.3 ± 2.8	18.8 ± 3.4	18.5 ± 3.6	0.198
Weight (kg)				
Mean ± SD	10.0 ± 1.4	9.2 ± 1.1	9.3 ± 1.4	<0.0001
Height (cm)				
Mean ± SD	77.7 ± 3.3	77.9 ± 4.0	80.7 ± 4.7	<0.0001
Ethnicity ^b				
Sundanese	91 (91.0)	0 (0.0)	0 (0.0)	<0.001
Sasak	0 (0.0)	99 (98.0)	0 (0.0)	
Minangkabau	0 (0.0)	0 (0.0)	97 (96.0)	
Other	9 (9.0)	2 (2.0)	4 (4.0)	
Residence				
Urban	50 (50.0)	51 (50.5)	51 (50.5)	0.997
Semi-rural	50 (50.0)	50 (49.5)	50 (49.5)	
Paternal education				
None	0 (0.0)	7 (6.9)	3 (3.0)	<0.001
Elementary school	6 (6.0)	19 (18.8)	7 (6.9)	
Junior high school	21 (21.0)	15 (14.8)	25 (24.8)	
Senior high school	50 (50.0)	44 (43.6)	61 (60.4)	
University	23 (23.0)	16 (15.8)	5 (5.0)	
Maternal education				
None	0 (0.0)	8 (7.9)	3 (3.0)	<0.001
Elementary school	9 (9.0)	15 (14.8)	6 (5.9)	
Junior high school	27 (27.0)	31 (30.7)	20 (19.8)	
Senior high school	45 (45.0)	39 (38.6)	63 (62.4)	
University	19 (19.0)	8 (7.9)	9 (8.9)	
Parental monthly income ^c				
Declined to answer	2 (2.0)	0 (0.0)	0 (0.0)	0.044
< 500,000 IDR	0 (0.0)	31 (30.7)	12 (11.9)	
500,000 IDR—Regional minimum salary	57 (58.2)	38 (37.6)	72 (71.3)	
> Regional minimum salary	41 (41.8)	32 (31.7)	17 (16.8)	
Number of children < 5y in the household				
1	77 (77.0)	88 (87.1)	75 (74.3)	0.362
2	18 (18.0)	11 (10.9)	19 (18.8)	
3	4 (4.0)	2 (2.0)	6 (5.9)	
4	1 (1.0)	0 (0.0)	1 (1.0)	
URTI symptoms ^d				
No	69 (69.0)	92 (91.1)	79 (78.2)	0.001
Yes	31 (31.0)	9 (8.9)	22 (21.8)	

^aChi-squared test for categorical data; t-test for continuous data

^bAs reported by parent/guardian

^cIDR = Indonesian rupiah; Regional minimum salary rates (2016) were 1,800,725 IDR in Padang, 2,626,940 IDR in Bandung, and 1,550,000 IDR in Lombok

^dUpper respiratory tract infection (URTI) symptoms include rhinorrhea, cough, and/or tonsillitis

<https://doi.org/10.1371/journal.pone.0195098.t001>

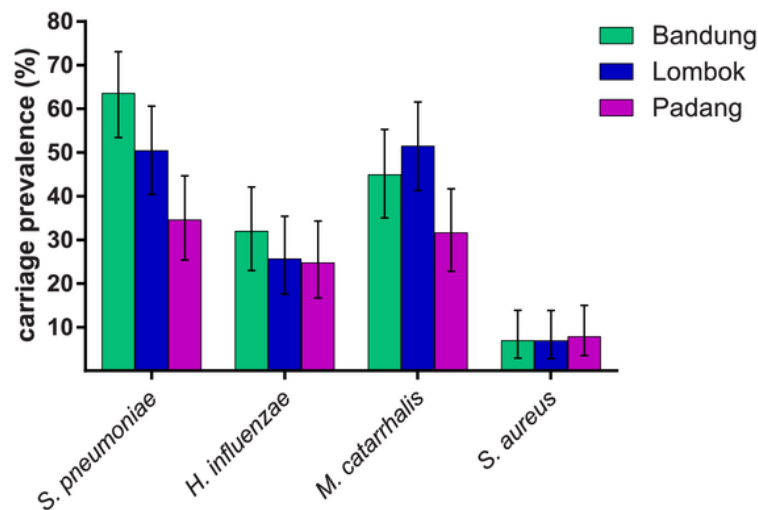


Fig 1. Nasopharyngeal carriage prevalence (%) of *S. pneumoniae*, *H. influenzae*, *M. catarrhalis*, and *S. aureus* in Indonesian children aged 12–24 months. Results are shown by region (Bandung, Padang, and Lombok). Error bars represent 95%CI.

<https://doi.org/10.1371/journal.pone.0195098.g001>

issues. There were four pneumococci for which serotype could not be determined: three were reported as 35A/10B-like by microarray (two of these were serogroup 33 by latex agglutination/Quellung whilst the third did not undergo phenotypic typing), and the fourth was 39/6C-like by microarray and non-typeable by latex. Two of the six serotype 11A pneumococci identified were typed as 11F-like by microarray, as previously described [26]. Multiple serotype carriage was found in 18/296 (6.1%) of samples overall, and in 18/144 (12.5%) of pneumococcal-positive samples. Serotypes 15B/C, 23F, NT2, 19F, and 6A were the most commonly identified. Fig 2 depicts the 20 most common serotypes shown by region. Overall, 76/164 (46.3%) of pneumococci belonged to PCV13 serotypes, and 72/296 (24.3%) of participants carried a PCV13 serotype. For PCV10, these proportions were 53/164 (32.3%) and 52/296 (17.6%),

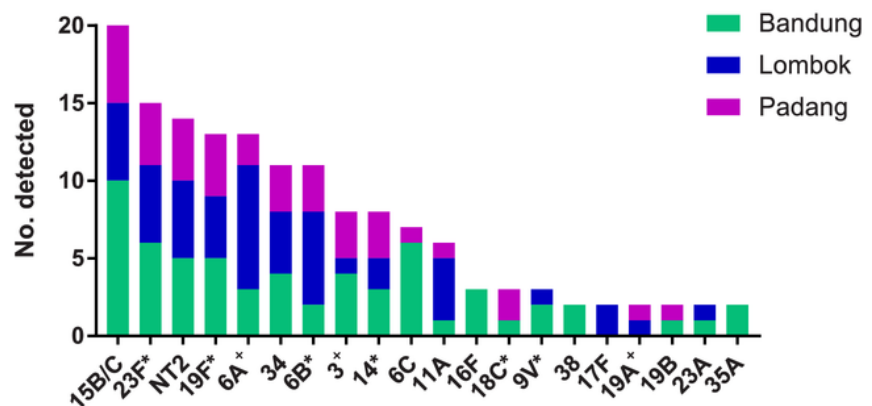


Fig 2. The twenty most common pneumococcal serotypes identified in nasopharyngeal swabs collected from Indonesian children aged 12–24 months, shown by region (Bandung, Padang, and Lombok). * indicates serotypes included in PCV10 and + indicates the additional three serotypes included in PCV13.

<https://doi.org/10.1371/journal.pone.0195098.g002>

respectively. Serotype distribution varied significantly by region, with 26/73 (36%) of pneumococci in Bandung, 28/53 (53%) in Central Lombok, and 22/38 (58%) in Padang belonging to PCV13 serotypes ($p = 0.043$, chi-squared test). None of the 83 samples positive for *H. influenzae* were type B; further typing of *H. influenzae* was not conducted.

Relationships between colonizing species were examined by calculating odds ratios (OR) and aOR adjusting for income, the presence of two or more children under five in the household, maternal education level, and presence of URTI symptoms to minimize potential confounding. A positive association was observed between carriage of *S. pneumoniae* and *M. catarrhalis* (OR 3.07 [95%CI 1.91–4.94], aOR 2.85 [95%CI 1.72–4.72]) and *H. influenzae* and *M. catarrhalis* (OR 2.34 [95%CI 1.40–3.91], aOR 2.18 [95%CI 1.28–3.72]), and a negative association was found between *M. catarrhalis* and *S. aureus* (OR 0.06 [95%CI 0.01–0.43], aOR 0.06 [95%CI 0.01–0.50]). No significant associations were observed between *S. pneumoniae* and *H. influenzae* (OR 1.58 [95%CI 0.95–2.65], aOR 1.64 [95%CI 0.95–2.83]), *S. pneumoniae* and *S. aureus* (OR 0.49 [95%CI 0.19–1.24], aOR 0.58 [95%CI 0.22–1.52]), or *H. influenzae* and *S. aureus* (OR 0.25 [95%CI 0.06–1.07], aOR 0.27 [95%CI 0.06–1.21]).

In children positive for carriage, the median density of carriage was 5.1 log₁₀ GE/ml (range 2.2–7.3) for *S. pneumoniae*, 5.6 log₁₀ GE/ml (range 3.6–7.8) for *H. influenzae*, 6.2 log₁₀ GE/ml (range 3.9–8.5) for *M. catarrhalis*, and 4.3 log₁₀ GE/ml (range 3.6–7.0) for *S. aureus*. As seen in Table 2, *S. pneumoniae* densities were higher when co-colonizing with *H. influenzae* or *M. catarrhalis*. Similarly, *H. influenzae* density was higher when it co-occurred with *M. catarrhalis*, and *M. catarrhalis* density was significantly higher when *S. pneumoniae* was a co-colonizer. During co-colonization, densities of *S. pneumoniae*, *H. influenzae*, and *M. catarrhalis* were positively correlated (Fig 3): *S. pneumoniae* and *H. influenzae* Spearman $\rho = 0.430$, $p = 0.002$; *S. pneumoniae* and *M. catarrhalis* Spearman $\rho = 0.400$, $p = 0.0002$; *H. influenzae* and *M. catarrhalis* Spearman $\rho = 0.571$, $p < 0.0001$. An opposite trend was observed for *S. pneumoniae* and *S. aureus*, as the median carriage density of *S. pneumoniae* was 4.61 log₁₀ GE/ml with *S. aureus* compared to 5.18 log₁₀ GE/ml without *S. aureus*, although the difference was not statistically significant ($p = 0.09$, Mann-Whitney test).

Discussion

We examined nasopharyngeal carriage of four clinically-relevant bacterial pathogens in Indonesian children living in three diverse regions. The carriage prevalence of *H. influenzae* and *S. aureus* were similar among the three regions, whereas carriage of *S. pneumoniae* and *M. catarrhalis* varied. The reasons for regional differences are unclear. Samples were collected during the same time frame, limiting seasonal effects, and differences remained after adjusting for risk factors related to socioeconomic status, exposure, and presence of URTI symptoms. Regional differences in carriage may relate to other risk factors not assessed in this study, ethnic differences, or environmental differences. The overall pneumococcal carriage prevalence in this study (49.5%) is consistent with previous carriage studies of children under five conducted in Lombok (46%) and Semarang, Java (43%) [12, 14]. The 27.5% carriage rate of *H. influenzae* is similar to the 32% prevalence previously reported in Lombok in children aged 0–24 months [15]. In the 1998 Lombok study, carriage prevalence of Hib was 4.5%, whereas no Hib was detected in the current study, likely due to widespread use of Hib vaccine following its introduction in 2013. Carriage prevalence of *S. aureus* was low (7.3%), however this is expected as *S. aureus* carriage is highest in neonates, older children and adults, and low in children aged 12–24 months [8, 9].

Overall, 46% of pneumococci belonged to PCV13 serotypes. Due to limited serotyping data available from invasive pneumococcal disease in Indonesia, monitoring serotype changes in

Table 2. Median density in log₁₀ genome equivalents/ml of pneumococcus (SP), *H. influenzae* (HI), and *M. catarrhalis* (MC) when found with (+) or without (-) another species.

Colonizing species	+ HI	- HI	P value ^a	+ MC	- MC	P value	+ SP	- SP	P value
<i>S. pneumoniae</i>	5.54	4.79	<0.0001	5.48	4.78	0.0017			
<i>H. influenzae</i>				5.77	5.15	0.02	5.69	5.15	0.058
<i>M. catarrhalis</i>	6.39	6.10	0.367				6.41	5.86	0.048

^aMann-Whitney test

<https://doi.org/10.1371/journal.pone.0195098.t002>

pneumococcal carriage may be a practical way of assessing vaccine impact. The distribution of pneumococcal serotypes varied among regions, ranging from 58% of serotypes carried by children in Padang belonging to PCV13 serotypes compared to 36% for children in Bandung. This finding has implications for the upcoming introduction of PCV13, as the proportion of circulating pneumococci with serotypes covered by the vaccine may vary among regions. Carriage of nonencapsulated pneumococci was common, consistent with reports from Nepal and Thailand [27, 28]. The genetic variants identified by microarray (36A/10B-like and 39/6C-like) warrant further investigation, as they could represent novel pneumococcal variants or potential new serotypes.

In this study, associations between *S. pneumoniae*, *H. influenzae*, and *M. catarrhalis* were consistently positive. In contrast, *S. aureus* carriage was negatively associated with *M. catarrhalis*, and trended towards negative associations with *S. pneumoniae* and *H. influenzae*. These observations are consistent with the literature [7]. Densities of *S. pneumoniae* and *H. influenzae* were positively associated in studies conducted in healthy children in Peru and Israel, similar to our results [10, 11].

A strength of the current study is the contemporaneous collection of samples from children living in distinct regions of Indonesia, which enabled the comparison of carriage prevalence among regions, and acquisition of the first data on carriage of *M. catarrhalis* and *S. aureus* in healthy children in this populous country. Although qPCR was used for detection of all four pathogens examined, confirmation of equivocal results (Ct values between 35–40) by culture was only conducted for *S. pneumoniae*, therefore the limit of detection was higher for *M. catarrhalis*, *S. aureus*, and *H. influenzae*, and these species may not have been detected if present at

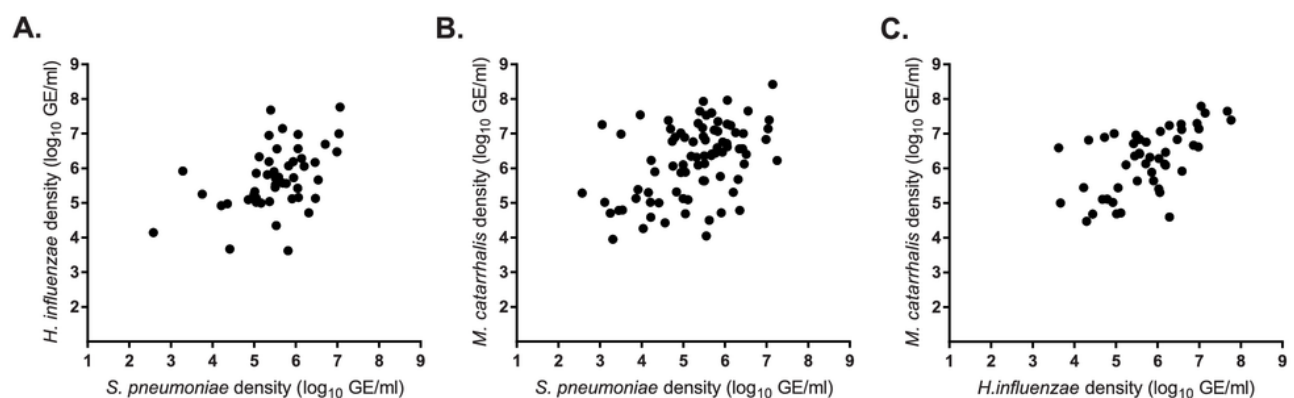


Fig 3. Density of *S. pneumoniae* and *H. influenzae* (A), *S. pneumoniae* and *M. catarrhalis* (B), and *M. catarrhalis* and *H. influenzae* (C) when present as co-colonizing species. Density are reported in log₁₀ genome equivalents/ml.

<https://doi.org/10.1371/journal.pone.0195098.g003>

low densities. Another limitation of the study is that respiratory viruses, an important component of the microbial community of the upper respiratory tract, were not assessed [29].

Bacterial density, and presence of multiple pathogens, has been linked to disease in several studies, however the mechanisms underlying these interactions are not well understood. In a study on children under 10 years of age in Tanzania [30], density of *S. pneumoniae*, *H. influenzae*, and *M. catarrhalis* was significantly higher in children with severe pneumonia compared to those with mild UTRI, and carriage of multiple species was more common in children with clinical pneumonia compared to those without respiratory infection. In Vietnamese children under five, nasopharyngeal density of pneumococcus was higher in children with radiologically confirmed pneumonia compared to healthy controls or children with other lower respiratory tract infection [5]. In both the Tanzanian and Vietnamese studies, nasopharyngeal sampling was conducted during acute illness and prior to antibiotic treatment. Co-colonization of *S. pneumoniae* and *H. influenzae* was significantly associated with radiologically confirmed pneumonia, whereas co-colonization of *H. influenzae* and *M. catarrhalis* was associated with other lower respiratory tract infection. *S. pneumoniae*, *H. influenzae*, and *M. catarrhalis* are the three most common bacterial causes of otitis media, which is increasingly recognized as a polymicrobial disease [31]. Co-colonization of *S. pneumoniae* or *H. influenzae* with *M. catarrhalis* has been associated with increased risk of otitis media [32]. Using *in vivo* models, mixed species biofilms have been found to increase persistence in ear disease [33]. Other proposed mechanisms for positive associations between bacterial species include interspecies quorum sensing and passive antimicrobial resistance, which have been observed in experimental models of otitis media [34, 35]. Host susceptibility may also be an underlying factor for positive associations observed between certain bacterial species. For example, a study in Fiji found that co-colonization by multiple pathogens was associated with ethnicity [36].

Continued surveillance of pneumococcal carriage and serotype distribution is warranted in Indonesia, especially in light of the upcoming introduction of pneumococcal conjugate vaccine, as our results suggest that vaccine impact may vary by region. Future studies on microbial interactions in the respiratory tract, ideally including viruses as well as bacterial pathogens, will help to shed light on the underlying mechanisms, as well as how nasopharyngeal microbiology relates to the development of respiratory infections such as pneumonia and otitis media.

Acknowledgments

The authors thank the study participants and their families and the health center staff from the six participating puskesmas. We acknowledge the laboratory team from the Microbiology Laboratory at Universitas Padjadjaran for laboratory analyses, the Pneumococcal Research group at Murdoch Children's Research Institute for provision of latex serotyping reagents, and Dan Belluoccio from Agilent Technologies and Kate Gould from BUGS Bioscience for microarray technical support and advice. We thank the Integrated Laboratory, Faculty of Medicine, Universitas Indonesia in Jakarta, Indonesia for provision of laboratory space and equipment for microarray analysis. We thank the Growth and Development clinical trial team from Hasan Sadikin General Hospital for study support. The Murdoch Children's Research Institute was supported by the Victorian Government's Operational Infrastructure Support Program.

Author Contributions

Conceptualization: Eileen M. Dunne, Chrysanti Murad, Sunaryati Sudigdoadi, Eddy Fadlyana, Rodman Tarigan, Sang Ayu Kompiya, Indriyani, Emma Watts, Catherine Satzke, Nurhandini Eka Dewi, Finny Fitry Yani, Kusnandi Rusmil, E. Kim Mulholland, Cissy Kartasmita.

Data curation: Jason Hinds.

Formal analysis: Eileen M. Dunne, Chrysanti Murad.

Investigation: Eileen M. Dunne, Chrysanti Murad, Sunaryati Sudigdoadi, Eddy Fadlyana, Rodman Tarigan, Sang Ayu Kompiyang Indriyani, Casey L. Pell, Nurhandini Eka Dewi, Finny Fitry Yani, Kusnandi Rusmil, Cissy Kartasasmita.

Project administration: Emma Watts.

Resources: Catherine Satzke, Jason Hinds.

Writing – original draft: Eileen M. Dunne, Chrysanti Murad, Casey L. Pell, Cissy Kartasasmita.

Writing – review & editing: Eddy Fadlyana, Rodman Tarigan, Sang Ayu Kompiyang Indriyani, Casey L. Pell, Emma Watts, Catherine Satzke, Jason Hinds, Finny Fitry Yani, E. Kim Mulholland.

References

- O'Brien K, Wolfson L, Watt J, Henkle E, Delport S, Deloria-Knoll M, et al. Burden of disease caused by *Streptococcus pneumoniae* in children younger than 5 years: global estimates. *Lancet*. 2009; 374:893–902. [https://doi.org/10.1016/S0140-6736\(09\)61204-6](https://doi.org/10.1016/S0140-6736(09)61204-6) PMID: 19748398
- Adegbola RA, DeAntonio R, Hill PC, Roca A, Usuf E, Hoet B, et al. Carriage of *Streptococcus pneumoniae* and other respiratory bacterial pathogens in low and lower-middle income countries: a systematic review and meta-analysis. *PLoS ONE*. 2014; 9(8):e103293. <https://doi.org/10.1371/journal.pone.0103293> PMID: 25084351
- Mackenzie G, Leach A, Carapetis J, Fisher J, Morris P. Epidemiology of nasopharyngeal carriage of respiratory bacterial pathogens in children and adults: cross-sectional surveys in a population with high rates of pneumococcal disease. *BMC Infect Dis*. 2010; 10(1):304. <https://doi.org/10.1186/1471-2334-10-304> PMID: 20969800
- Simell B, Auranen K, Käyhty H, Goldblatt D, Dagan R, O'Brien KL, et al. The fundamental link between pneumococcal carriage and disease. *Expert Rev Vaccines*. 2012; 11. <https://doi.org/10.1586/erv.12.53> PMID: 22913260
- Vu HTT, Yoshida LM, Suzuki M, Nguyen HAT, Nguyen CDL, Nguyen ATT, et al. Association between nasopharyngeal load of *Streptococcus pneumoniae*, viral coinfection, and radiologically confirmed pneumonia in Vietnamese children. *Pediatr Infect Dis J*. 2011; 30(1):11–8 <https://doi.org/10.1097/INF.0b013e3181f111a2> PMID: 20686433
- Short KR, Reading PC, Wang N, Diavatopoulos DA, Wijburg OL. Increased nasopharyngeal bacterial titers and local inflammation facilitate transmission of *Streptococcus pneumoniae*. *MBio*. 2012; 3(5).
- Dunne EM, Smith-Vaughan HC, Robins-Browne RM, Mulholland EK, Satzke C. Nasopharyngeal microbial interactions in the era of pneumococcal conjugate vaccination. *Vaccine*. 2013; 31(19):2333–42. <https://doi.org/10.1016/j.vaccine.2013.03.024> PMID: 23523773
- Regev-Yochay G, Dagan R, Raz M, Carmeli Y, Shainberg B, Derazne E, et al. Association between carriage of *Streptococcus pneumoniae* and *Staphylococcus aureus* in children. *JAMA*. 2004; 292(6):716–20. <https://doi.org/10.1001/jama.292.6.716> PMID: 15304469
- Bogaert D, van Belkum A, Sluiter M, Luijendijk A, de Groot R, Rümke HC, et al. Colonisation by *Streptococcus pneumoniae* and *Staphylococcus aureus* in healthy children. *Lancet*. 2004; 363(9424):1871–2. [https://doi.org/10.1016/S0140-6736\(04\)16357-5](https://doi.org/10.1016/S0140-6736(04)16357-5) PMID: 15183627
- Lewnard JA, Huppert A, Givon-Lavi N, Pettigrew MM, Regev-Yochay G, Dagan R, et al. Density, serotype diversity, and fitness of *Streptococcus pneumoniae* in upper respiratory tract cocolonization with nontypeable *Haemophilus influenzae*. *J Infect Dis*. 2016; 214(9):1411–20. <https://doi.org/10.1093/infdis/jiw381> PMID: 27540112
- Chien Y-W, Vidal JE, Grijalva CG, Bozio C, Edwards KM, Williams JV, et al. Density Interactions between *Streptococcus pneumoniae*, *Haemophilus influenzae* and *Staphylococcus aureus* in the nasopharynx of young Peruvian Children. *Pediatr Infect Dis J*. 2013; 32(1):72–7.
- Farida H, Severin JA, Gasem MH, Keuter M, Wahyono H, van den Broek P, et al. Nasopharyngeal carriage of *Streptococcus pneumoniae* in pneumonia-prone age groups in Semarang, Java Island, Indonesia. *PLoS ONE*. 2014; 9(1):e87431. <https://doi.org/10.1371/journal.pone.0087431> PMID: 24498104

13. Soewignjo S, Gessner BD, Sutanto A, Steinhoff M, Prijanto M, Nelson C, et al. *Streptococcus pneumoniae* nasopharyngeal carriage prevalence, serotype distribution, and resistance patterns among children on Lombok Island, Indonesia. *Clin Infect Dis*. 2001; 32(7):1039–43. <https://doi.org/10.1086/319605> PMID: 11264032
14. Hadinegoro SR, Prayitno A, Khoeri MM, Djelantik IG, Dewi NE, Indriyani SA, et al. Nasopharyngeal carriage of *Streptococcus pneumoniae* in healthy children under five years old in Central Lombok Regency, Indonesia. *Southeast Asian J Trop Med Public Health*. 2016; 47(3):485–93. PMID: 27405132
15. Gessner BD, Sutanto A, Steinhoff M, Soewignjo S, Widjaya A, Nelson C, et al. A population-based survey of *Haemophilus influenzae* type b nasopharyngeal carriage prevalence in Lombok Island, Indonesia. *Pediatr Infect Dis J*. 1998; 17(9):S179–S82.
16. Satzke C, Turner P, Virolainen-Julkunen A, Adrian PV, Antonio M, Hare KM, et al. Standard method for detecting upper respiratory carriage of *Streptococcus pneumoniae*: updated recommendations from the World Health Organization Pneumococcal Carriage Working Group. *Vaccine*. 2013; 32(1):165–79. <https://doi.org/10.1016/j.vaccine.2013.08.062> PMID: 24331112
17. O'Brien KL, Bronsdon MA, Dagan R, Yagupsky P, Janco J, Elliott J, et al. Evaluation of a medium (STGG) for transport and optimal recovery of *Streptococcus pneumoniae* from nasopharyngeal secretions collected during field studies. *J Clin Microbiol*. 2001; 39(3):1021–4. <https://doi.org/10.1128/JCM.39.3.1021-1024.2001> PMID: 11230421
18. Carvalho Mda G, Tondella ML, McCaustland K, Weidlich L, McGee L, Mayer LW, et al. Evaluation and improvement of real-time PCR assays targeting *lytA*, *ply*, and *psaA* genes for detection of pneumococcal DNA. *J Clin Microbiol*. 2007; 45(8):2460–6. <https://doi.org/10.1128/JCM.02498-06> PMID: 17537936
19. Laboratory Methods for the Diagnosis of Meningitis Caused by *Neisseria meningitidis*, *Streptococcus pneumoniae*, and *Haemophilus influenzae*. 2nd ed: WHO Press; 2011.
20. Satzke C, Dunne EM, Porter BD, Klugman KP, Mulholland EK, PneuCarriage project group. The PneuCarriage Project: a multi-centre comparative study to identify the best serotyping methods for examining pneumococcal carriage in vaccine evaluation studies. *PLoS Med*. 2015; 12. <https://doi.org/10.1371/journal.pmed.1001903> PMID: 26575033
21. Porter BD, Ortika BD, Satzke C. Capsular serotyping of *Streptococcus pneumoniae* by latex agglutination. *J Vis Exp*. 2014;(91):51747. <https://doi.org/10.3791/51747> PMID: 25285991
22. Ortika BD, Habib M, Dunne EM, Porter BD, Satzke C. Production of latex agglutination reagents for pneumococcal serotyping. *BMC Res Notes*. 2013; 6:49. <https://doi.org/10.1186/1756-0500-6-49> PMID: 23379961
23. Habib M, Porter BD, Satzke C. Capsular serotyping of *Streptococcus pneumoniae* using the Quellung reaction. *J Vis Exp*. 2014;(84):e51208. <https://doi.org/10.3791/51208> PMID: 24637727
24. van Selm S, van Cann LM, Kolkman MAB, van der Zeijst BAM, van Putten JPM. Genetic Basis for the structural difference between *Streptococcus pneumoniae* serotype 15B and 15C capsular polysaccharides. *Infect Immunity*. 2003; 71(11):6192–8. <https://doi.org/10.1128/iai.71.11.6192-6198.2003>
25. Salter SJ, Hinds J, Gould KA, Lambertsen L, Hanage WP, Antonio M, et al. Variation at the capsule locus, *cps*, of mistyped and non-typable *Streptococcus pneumoniae* isolates. *Microbiol*. 2012; 158(6):1560–9. <https://doi.org/10.1099/mic.0.056580-0>
26. Manna S, Ortika BD, Dunne EM, Holt KE, Kama M, Russell FM, et al. A novel genetic variant of *Streptococcus pneumoniae* serotype 11A discovered in Fiji. *Clin Microbiol Infection*. 2017. <https://doi.org/10.1016/j.cmi.2017.06.031> PMID: 28736074
27. Turner P, Turner C, Jankhot A, Helen N, Lee SJ, Day NP, et al. A longitudinal study of *Streptococcus pneumoniae* carriage in a cohort of infants and their mothers on the Thailand-Myanmar border. *PLoS ONE*. 2012; 7(5):e38271. <https://doi.org/10.1371/journal.pone.0038271> PMID: 22693610
28. Kandasamy R, Gurung M, Thapa A, Ndimah S, Adhikari N, Murdoch DR, et al. Multi-serotype pneumococcal nasopharyngeal carriage prevalence in vaccine naïve Nepalese children, assessed using molecular serotyping. *PLoS ONE*. 2015; 10(2):e0114286. <https://doi.org/10.1371/journal.pone.0114286> PMID: 25643355
29. Bosch AATM, Biesbroek G, Trzcinski K, Sanders EAM, Bogaert D. Viral and bacterial interactions in the upper respiratory tract. *PLoS Pathogens*. 2013; 9(1):e1003057. <https://doi.org/10.1371/journal.ppat.1003057> PMID: 23326226
30. Chochua S, D'Acremont V, Hanke C, Alfa D, Shak J, Kilowoko M, et al. Increased nasopharyngeal density and concurrent carriage of *Streptococcus pneumoniae*, *Haemophilus influenzae*, and *Moraxella catarrhalis* are associated with pneumonia in febrile children. *PLoS ONE*. 2016; 11(12):e0167725. <https://doi.org/10.1371/journal.pone.0167725> PMID: 27907156
31. Vergison A. Microbiology of otitis media: A moving target. *Vaccine*. 2008; 26(Supplement 7):G5–G10. <https://doi.org/10.1016/j.vaccine.2008.11.006> PMID: 19094935

32. Ruohola A, Pettigrew MM, Lindholm L, Jalava J, Räisänen KS, Vainionpää R, et al. Bacterial and viral interactions within the nasopharynx contribute to the risk of acute otitis media. *J Infect*. 2013; 66(3):247–54. <https://doi.org/10.1016/j.jinf.2012.12.002> PMID: 23266462
33. Perez AC, Pang B, King LB, Tan L, Murrah KA, Reimche JL, et al. Residence of *Streptococcus pneumoniae* and *Moraxella catarrhalis* within polymicrobial biofilm promotes antibiotic resistance and bacterial persistence in vivo. *Pathog Dis*. 2014; 70(3):280–8. <https://doi.org/10.1111/2049-632X.12129> PMID: 24391058
34. Armbruster CE, Hong W, Pang B, Weimer KED, Juneau RA, Turner J, et al. Indirect pathogenicity of *Haemophilus influenzae* and *Moraxella catarrhalis* in polymicrobial otitis media occurs via interspecies quorum signaling. *mBio*. 2010; 1(3):e00102-10-e-19. <https://doi.org/10.1128/mBio.00102-10> PMID: 20802829
35. Weimer KED, Juneau RA, Murrah KA, Pang B, Armbruster CE, Richardson SH, et al. Divergent mechanisms for passive pneumococcal resistance to β -Lactam antibiotics in the presence of *Haemophilus influenzae*. *J Infect Dis*. 2011; 203(4):549–55. <https://doi.org/10.1093/infdis/jiq087> PMID: 21220774
36. Dunne EM, Manning J, Russell FM, Robins-Browne RM, Mulholland EK, Satzke C. Effect of pneumococcal vaccination on nasopharyngeal carriage of *Streptococcus pneumoniae*, *Haemophilus influenzae*, *Moraxella catarrhalis*, and *Staphylococcus aureus* in Fijian children. *J Clin Microbiol*. 2012; 50(3):1034–8. <https://doi.org/10.1128/JCM.06589-11> PMID: 22170924

ORIGINALITY REPORT

14%

SIMILARITY INDEX

7%

INTERNET SOURCES

16%

PUBLICATIONS

12%

STUDENT PAPERS

PRIMARY SOURCES

1

Chrysanti Murad, Eileen M. Dunne, Sunaryati Sudigdoadi, Eddy Fadlyana et al.

"Pneumococcal carriage, density, and co-colonization dynamics: A longitudinal study in Indonesian infants", International Journal of Infectious Diseases, 2019

Publication

5%

2

journals.plos.org

Internet Source

3%

3

Submitted to Western Governors University

Student Paper

2%

4

microbiomejournal.biomedcentral.com

Internet Source

1%

5

Fernanda Rodrigues. "Paediatric nasopharyngeal ecology in the era of conjugate vaccines", Repositório Aberto da Universidade do Porto, 2014.

Publication

1%

6

ira.le.ac.uk

Internet Source

1%

7

Catherine Satzke, Eileen M. Dunne, Molina Choummanivong, Belinda D. Ortika et al.
"Pneumococcal carriage in vaccine-eligible children and unvaccinated infants in Lao PDR two years following the introduction of the 13-valent pneumococcal conjugate vaccine",
Vaccine, 2019

Publication

1%

8

Submitted to University of Melbourne
Student Paper

1%

Exclude quotes On
Exclude bibliography On

Exclude matches < 1%